

TARA Single-hole basin mixer with pop-up waste - Chrome



TARA

22 513 892



- 165mm projection
- pivotable spout 360°
- circular, air-enriched flow
- height of mixer 295 mm
- height up to aerator 172 mm
- hole diameter 35 mm
- rosette Ø 59 mm
- 2x screw-in M 10 x 1 pressure hose, leak-tested
- max. flow 7 l/min
- lead-free
- This product can help a building meet the requirements of Green Building Rating Systems, e.g. LEED®, BREEAM®, DGNB

Only suitable for basins with an overflow.

	Chrome	22 513 892-00
	Brushed Platinum	22 513 892-06
	Platinum	22 513 892-08
	Dark Chrome	22 513 892-19
	Brushed Durabronze (23kt Gold)	22 513 892-28
	Matte Black	22 513 892-33
	Brushed Champagne (22kt Gold)	22 513 892-46
	Champagne (22kt Gold)	22 513 892-47
	Brushed Chrome	22 513 892-93
	Brushed Dark Platinum	22 513 892-99

22 513 892

mm [inches]



Flow rate chart



Certificates

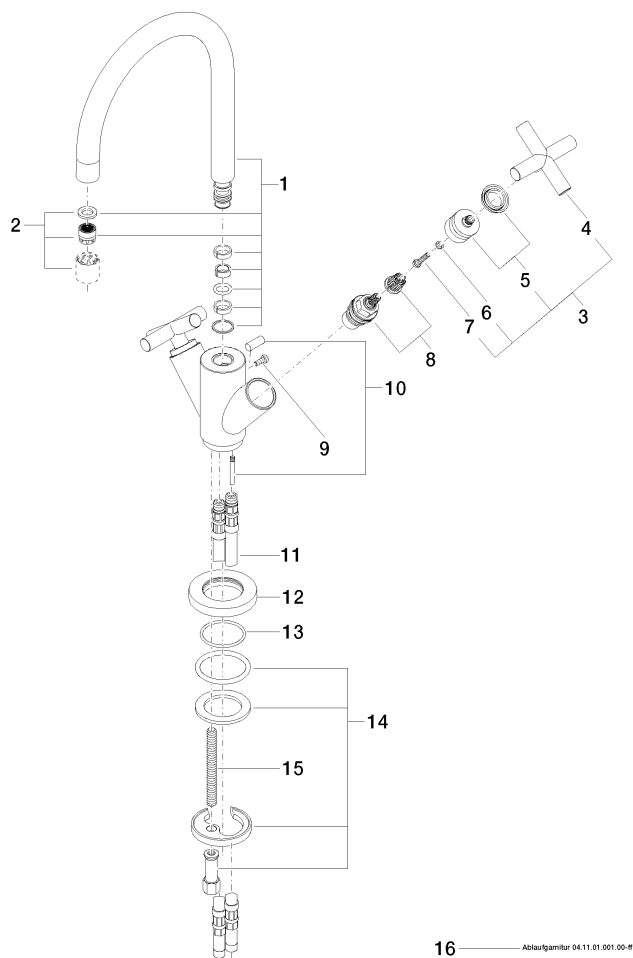
ETA_18512.

WRAS_1810003.

LGA_18920.

GDV_0400194.

22 513 892



16 Abbaufamilie 04.11.01.001.00-ff

Spare parts list

No.	Item Number	Name	Quantity used	Delivery time
1	90 28 22 213 01-00	spout	1	10
2	90 23 01 028 03-00	aerator	1	10
3	90 20 89 010 10-00	handle	2	10
4	09 20 89 010-00	handle	2	60
5	90 12 12 007 00-00	base	2	10
6	90 30 11 029 00 90	disc	2	2
7	90 30 30 075 00 90	screw	2	2
8	90 90 03 151 00 90	top	2	2
9	09 30 30 054 90	screw	1	2
10	04 20 89 035 80-00	pull-rod	1	10
11	04 30 04 016 00 90	hose	2	60
12	09 28 10 132-00	ring	1	10
13	09 14 10 134 90	seal	1	2
14	04 30 11 038 00 90	fixing set	1	2
15	09 31 11 011 90	pin	1	2
16	90 11 01 001 00-00	pop-up waste	1	10