

## TARA Single-hole basin mixer with stand pipe without pop-up waste - Brushed Dark Platinum

22 585 892 Product version from 4/1/2024



- 201mm projection
- pivotable spout 360°
- circular, air-enriched flow
- total height 1095 - 1166 mm
- height up to aerator 1025 – 1095 mm
- rosette Ø 135 mm
- max. flow 5.7 l/min
- lead-free
- This product can help a building meet the requirements of Green Building Rating Systems, e.g. LEED®, BREEAM®, DGNB
- WRAS

|   |                                |               |
|---|--------------------------------|---------------|
|    | Brushed Dark Platinum          | 22 585 892-99 |
|    | Chrome                         | 22 585 892-00 |
|    | Brushed Platinum               | 22 585 892-06 |
|    | Platinum                       | 22 585 892-08 |
|    | Dark Chrome                    | 22 585 892-19 |
|    | Brushed Durabronze (23kt Gold) | 22 585 892-28 |
|    | Matte Black                    | 22 585 892-33 |
|    | Brushed Bronze                 | 22 585 892-42 |
|    | Brushed Champagne (22kt Gold)  | 22 585 892-46 |
|   | Champagne (22kt Gold)          | 22 585 892-47 |
|  | Brushed Chrome                 | 22 585 892-93 |

### Required miscellaneous



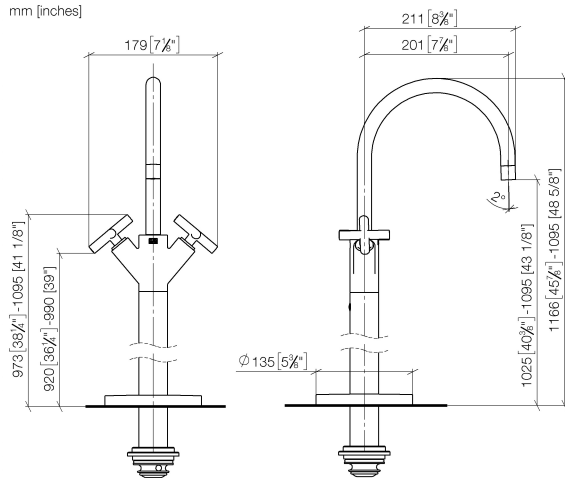
#### Concealed floor mounting -

35 945 970 90

- max. recess depth mm
- min. recess depth mm

## TARA Single-hole basin mixer with stand pipe without pop-up waste - Brushed Dark Platinum

22 585 892 Product version from 4/1/2024  
mm [inches]



### Flow rate chart



### Codes & Standards

DIN 4109

ISO 3822

Scottish Water  
Byelaws

UK Water Supply  
Regulations

### Ü-Zeichen



## TARA Single-hole basin mixer with stand pipe without pop-up waste - Brushed Dark Platinum

---

22 585 892 Product version from 4/1/2024

### Certificates

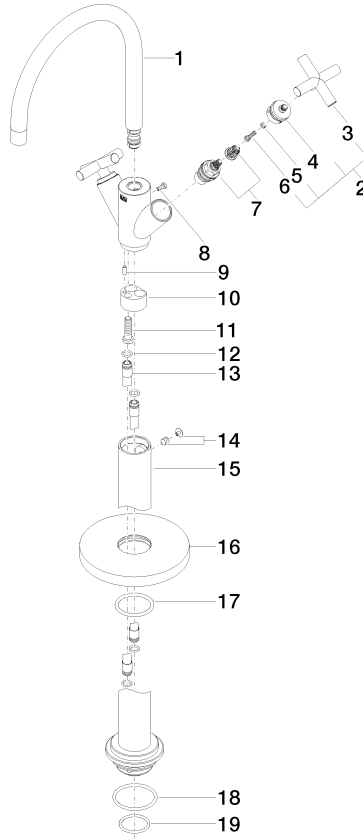
---

LGA\_38

WRAS\_2304

## TARA Single-hole basin mixer with stand pipe without pop-up waste - Brushed Dark Platinum

22 585 892 Product version from 4/1/2024



### Spare parts list

| No. | Item Number        | Name       | Quantity used | Delivery time |
|-----|--------------------|------------|---------------|---------------|
| 1   | 90 28 22 214 02-99 | spout      | 1             | 20            |
| 2   | 90 20 89 010 10-99 | handle     | 2             | 20            |
| 3   | 09 20 89 010-99    | handle     | 2             | 60            |
| 4   | 90 12 12 219 00-99 | base       | 2             | 20            |
| 5   | 90 30 11 029 00 90 | disc       | 2             | 2             |
| 6   | 90 30 30 075 00 90 | screw      | 2             | 2             |
| 7   | 90 90 03 151 00 90 | top        | 2             | 2             |
| 8   | 09 30 30 054 90    | screw      | 1             | 2             |
| 9   | 09 31 11 040 90    | pin        | 1             | 2             |
| 10  | 09 24 03 193 90    | adaptor    | 1             | 2             |
| 11  | 09 30 30 047 90    | screw      | 1             | 2             |
| 12  | 09 14 10 139 90    | seal       | 4             | 2             |
| 13  | 04 28 22 022 10 90 | connection | 2             | 2             |
| 14  | 04 31 11 002 00 90 | pin        | 1             | 2             |
| 15  | 04 28 22 028 00-99 | pipe       | 1             | 60            |
| 16  | 09 27 88 011-99    | rosette    | 1             | 60            |
| 17  | 90 14 10 043 00 90 | seal       | 1             | 2             |
| 18  | 09 14 10 084 90    | seal       | 1             | 2             |
| 19  | 09 14 10 018 90    | seal       | 1             | 2             |