

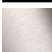








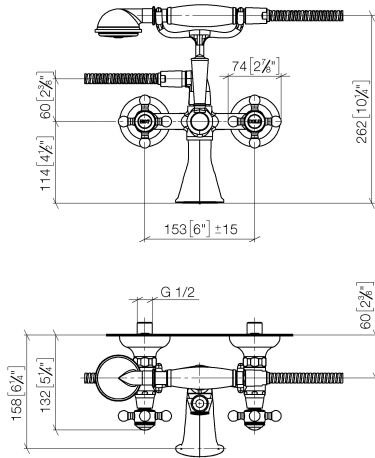
- 160mm projection
- Hand shower: COMPACT RAIN, max. flow rate 9 l/min (at 3 bar)
- spout: rectangular normal flow
- wall bracket
- rotary diverter for bath/shower
- rosette Ø 70 mm
- 1/2" connection
- gauge 153 mm
- metal shower hose 1250mm with integrated anti-twist protection
- max. spout flow rate 26 l/min
- WRAS

Intrinsic protection against back flow.

|   |                               |               |
|---|-------------------------------|---------------|
|  | Platinum                      | 25 023 360-08 |
|  | Chrome                        | 25 023 360-00 |
|  | Brushed Platinum              | 25 023 360-06 |
|  | Durabrand (23kt Gold)         | 25 023 360-09 |
|  | Brushed Durabrand (23kt Gold) | 25 023 360-28 |
|  | Brushed Dark Brass            | 25 023 360-39 |
|  | Brushed Dark Platinum         | 25 023 360-99 |

25 023 360 Product version from 7/1/2025

mm [inches]



### Flow rate chart



### Codes & Standards

EN 1717

Scottish Water  
Byelaws

UK Water Supply  
Regulations



## MADISON Bath mixer for wall mounting with hand shower set - Platinum

MADISON

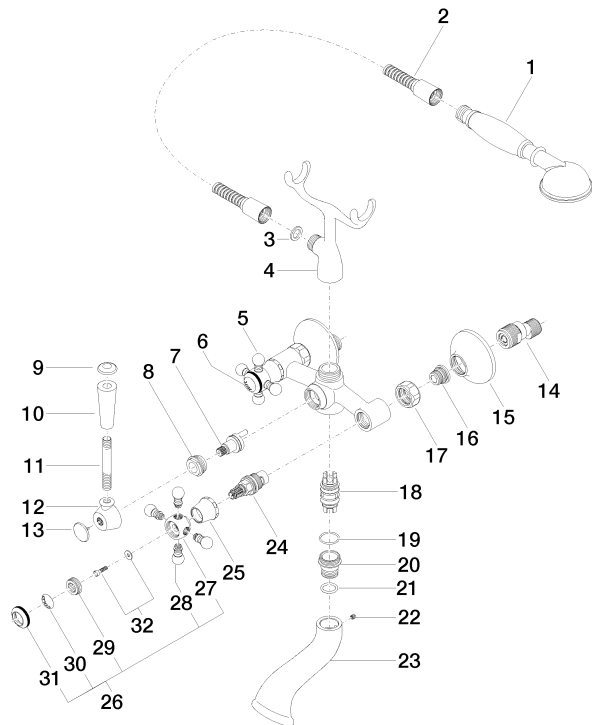
25 023 360 Product version from 7/1/2025

Certificates and sustainability

Belgaqua\_21-378-2 WRAS\_240702

25 023 360 Product version from 7/1/2025

Parts for other  
finishes can be found  
here: [Chrome](#)



## Spare parts list

| No.  | Item Number        | Name   | Quantity used | Delivery time |
|--|--------------------|--|---------------|---------------|
| 14   | 04 11 04 030 00 90 | connection   | 2.00          | 2             |
| 5  | 04 20 36 002 07-08 | handle ( hot )   | 1.00          | 40            |
| 9  | 09 30 30 062-08    | screw  | 1.00          | 40            |
| 27   | 09 20 36 002-08    | handle   | 2.00          | 40            |
| 23   | 09 11 06 033 20-08 | spout  | 1.00          | 40            |
| 31   | 09 20 36 005-08    | handle   | 2.00          | 40            |
| 25   | 09 21 02 055-08    | cover  | 2.00          | 40            |
| 6  | 09 26 01 011 90    | accessories  | 1.00          | 2             |
| 24   | 90 90 03 131 00 90 | top  | 2.00          | 2             |
| 17   | 09 23 30 010-08    | nut  | 2.00          | 60            |
| 29   | 09 20 83 006 90    | handle   | 2.00          | 2             |
| 13   | 09 30 30 064-08    | screw  | 1.00          | 40            |
| 2  | 28 104 970-08      | Metal shower hose 1/2" x 1/2" x 1250 mm - Platinum                 | 1.00          | 40            |
| 30   | 09 26 01 010 90    | accessories  | 1.00          | 2             |
| 28   | 09 20 36 004-08    | handle   | 8.00          | 40            |
| 26   | 04 20 36 002 06-08 | handle ( cold )  | 1.00          | 40            |
| 12   | 09 18 20 011-08    | base   | 1.00          | 40            |
| 15   | 09 27 39 010-08    | rosette  | 2.00          | 40            |
| 21   | 09 14 10 022 90    | seal   | 1.00          | 2             |
| 1  | 28 002 970-08      | MADISON Metal hand shower with porcelain insert (white) - Platinum | 1.00          | 40            |
| 16   | 04 29 05 014 00 90 | nipple   | 2.00          | 2             |
| 10   | 11 170 370-08      | MADISON Lever insert - Platinum                                    | 1.00          | 40            |
| 4  | 04 17 20 010 00-08 | holder   | 1.00          | -             |
| Spare part can no longer be ordered, please order the replacement item |                    |  |               |               |
| 32   | 04 30 30 029 00 90 | fixing set   | 2.00          | 2             |
| 20   | 09 24 03 123 20 90 | nipple   | 1.00          | 2             |
| 11   | 09 28 22 013 90    | pipe   | 1.00          | 2             |
| 8  | 09 23 10 007 90    | nut  | 1.00          | 2             |
| 3  | 90 14 20 002 00 90 | seal   | 1.00          | 2             |
| 18   | 90 21 10 010 00 90 | insert   | 1.00          | 2             |
| 22   | 90 31 11 030 00 90 | pin  | 1.00          | 2             |
| 7  | 90 15 01 001 00 90 | diverter   | 1.00          | 2             |
| 19   | 90 14 10 056 00 90 | seal   | 1.00          | 2             |