

# TARA Shower set without hand shower - Brushed Durabrass (23kt Gold)

26 413 892    Product version from 4/1/2024



- slide bar
- Pipe diameter 18 mm
- rosettes Ø 55 mm
- gauge 800 mm
- metal shower hose 1750mm with integrated anti-twist protection
- shower hose connector 3/8"
- WRAS


This article does not include a hand shower!

|   |                               |               |
|---|-------------------------------|---------------|
|    | Brushed Durabrass (23kt Gold) | 26 413 892-28 |
|    | Chrome                        | 26 413 892-00 |
|    | Brushed Platinum              | 26 413 892-06 |
|    | Platinum                      | 26 413 892-08 |
|    | Dark Chrome                   | 26 413 892-19 |
|    | Matte Black                   | 26 413 892-33 |
|    | Brushed Bronze                | 26 413 892-42 |
|    | Brushed Champagne (22kt Gold) | 26 413 892-46 |
|    | Champagne (22kt Gold)         | 26 413 892-47 |
|   | Brushed Chrome                | 26 413 892-93 |
|  | Brushed Dark Platinum         | 26 413 892-99 |


## TARA Shower set without hand shower - Brushed Durabronz (23kt Gold)

26 413 892 Product version from 4/1/2024

### Recommended miscellaneous

|   |   |               |
|---|---|---------------|
|  | <b>Concealed wall elbow -</b><br>• max. recess depth mm<br>• min. recess depth mm | 35 085 970 90 |
|---|---|---------------|


### Required miscellaneous

|   |  |               |
|---|--|---------------|
|  | <b>Hand shower - Brushed Durabronz (23kt Gold)</b> | 28 018 979-28 |
|---|--|---------------|


### Required miscellaneous

|   |  |               |
|---|--|---------------|
|  | <b>Hand shower - Brushed Durabronz (23kt Gold)</b> | 28 017 979-28 |
|---|--|---------------|

### Required miscellaneous

|   |   |                    |
|---|---|--------------------|
|  | <b>Hand shower FlowReduce - Brushed Durabronz (23kt Gold)</b> | 28 012 979-28 0010 |
|---|---|--------------------|

### Required miscellaneous

|   |   |                    |
|---|---|--------------------|
|  | <b>Hand shower FlowReduce - Brushed Durabronz (23kt Gold)</b> | 28 018 979-28 0010 |
|---|---|--------------------|

### Required miscellaneous

|   |  |                    |
|---|--|--------------------|
|  | <b>SERIES-VARIOUS Hand shower FlowReduce - Brushed Durabronz (23kt Gold)</b> | 28 029 979-28 0010 |
|---|--|--------------------|

### Required miscellaneous

|   |  |                    |
|---|--|--------------------|
|  | <b>SERIES-VARIOUS Hand shower FlowReduce - Brushed Durabronz (23kt Gold)</b> | 28 025 979-28 0010 |
|---|--|--------------------|

### Recommended miscellaneous

|   |   |               |
|---|---|---------------|
|  | <b>Wall elbow - Brushed Durabronz (23kt Gold)</b> | 28 450 625-28 |
|---|---|---------------|


### Required miscellaneous

|   |  |               |
|---|--|---------------|
|  | <b>Hand shower - Brushed Durabronz (23kt Gold)</b> | 28 016 979-28 |
|---|--|---------------|

### Required miscellaneous

|   |  |               |
|---|--|---------------|
|  | <b>Hand shower - Brushed Durabronz (23kt Gold)</b> | 28 012 979-28 |
|---|--|---------------|

### Required miscellaneous

|   |   |                    |
|---|---|--------------------|
|  | <b>Hand shower FlowReduce - Brushed Durabronz (23kt Gold)</b> | 28 016 979-28 0010 |
|---|---|--------------------|

### Required miscellaneous

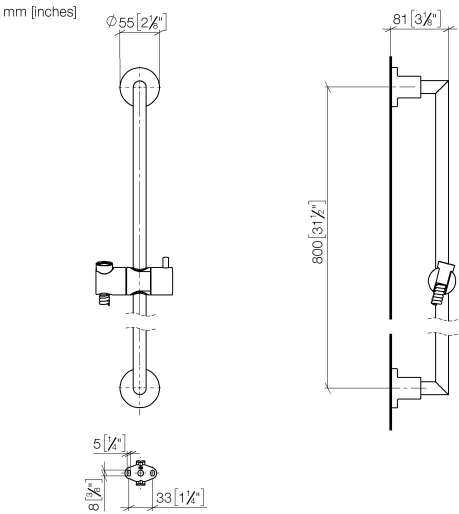
|   |  |                    |
|---|--|--------------------|
|  | <b>SERIES-VARIOUS Hand shower FlowReduce - Brushed Durabronz (23kt Gold)</b> | 28 027 979-28 0010 |
|---|--|--------------------|

### Required miscellaneous

|   |   |               |
|---|---|---------------|
|  | <b>SERIES-VARIOUS Hand shower - Brushed Durabronz (23kt Gold)</b> | 28 029 979-28 |
|---|---|---------------|

TARA Shower set without hand shower - Brushed Durabronss (23kt Gold)

26 413 892    Product version from 4/1/2024



Codes & Standards

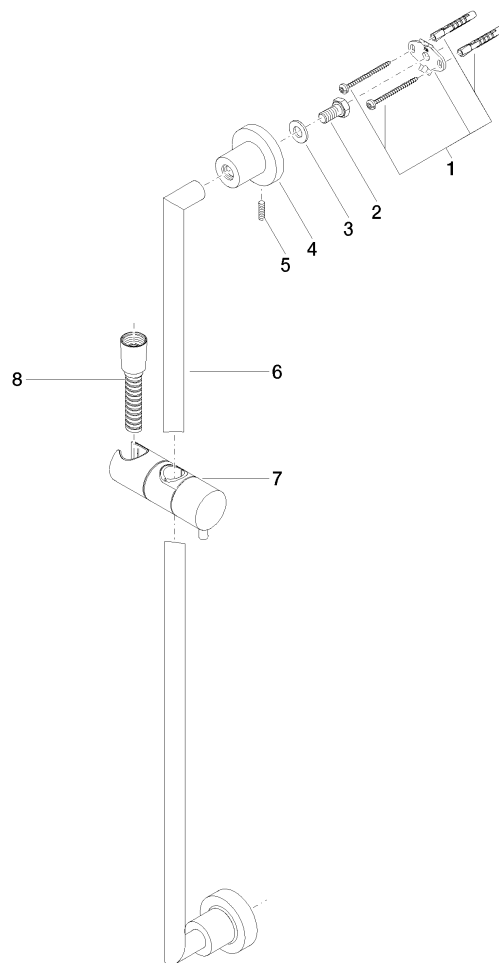
|                           |                                |             |
|---------------------------|--------------------------------|-------------|
| Scottish Water<br>Byelaws | UK Water Supply<br>Regulations | XP P 41-280 |
|---------------------------|--------------------------------|-------------|

Certificates

|           |               |
|-----------|---------------|
| WRAS_2009 | ACS_20 ACC LY |
|-----------|---------------|

## TARA Shower set without hand shower - Brushed Durabronz (23kt Gold)

26 413 892 Product version from 4/1/2024



### Spare parts list

| No. | Item Number        | Name  | Quantity used | Delivery time |
|-----|--------------------|---|---------------|---------------|
| 1   | 05 17 20 739 00 90 | fixing set  | 2             | 2             |
| 2   | 09 30 30 071 90    | screw   | 2             | 2             |
| 3   | 09 30 11 046 90    | disc  | 2             | 2             |
| 4   | 08 17 89 505-28    | holder  | 2             | 20            |
| 5   | 04 31 11 113 00 90 | pin   | 2             | 2             |
| 6   | 05 28 22 590 00-28 | bar   | 1             | 20            |
| 7   | 12 580 970-28      | Slide unit - Brushed Durabronz (23kt Gold)                              | 1             | 20            |
| 8   | 28 322 970-28      | Metal shower hose 1/2" x 3/8" x 1750 mm - Brushed Durabronz (23kt Gold) | 1             | 20            |