

Shower set without hand shower - Brushed Bronze

SERIES-VARIOUS

26 413 979 Product version from 10/1/2023



- COMPACT RAIN, max. flow rate l/min (at 3 bar)
- gauge 853 mm
- shower hose connector 3/8"
- metal shower hose 1750mm with integrated anti-twist protection
- slide bar
- Pipe diameter 18 mm
- inherently safe from back flow
- WRAS

This article does not include a hand shower!

	Brushed Bronze	26 413 979-42
	Chrome	26 413 979-00
	Brushed Platinum	26 413 979-06
	Platinum	26 413 979-08
	Dark Chrome	26 413 979-19
	Light Gold	26 413 979-26
	Brushed Light Gold	26 413 979-27
	Brushed Durabronze (23kt Gold)	26 413 979-28
	Matte Black	26 413 979-33
	Brushed Champagne (22kt Gold)	26 413 979-46
	Champagne (22kt Gold)	26 413 979-47
	Brushed Chrome	26 413 979-93
	Brushed Dark Platinum	26 413 979-99

Recommended miscellaneous



- Concealed wall elbow -**
- min. recess depth 90 mm
 - max. recess depth 163 mm

35 085 970 90

Required miscellaneous



Hand shower - Brushed Bronze 28 012 979-42

Required miscellaneous



Hand shower - Brushed Bronze 28 016 979-42

Required miscellaneous



Hand shower - Brushed Bronze 28 017 979-42

Required miscellaneous



Hand shower FlowReduce - Brushed Bronze 28 012 979-42 0010

Required miscellaneous



Hand shower FlowReduce - Brushed Bronze 28 016 979-42 0010

Required miscellaneous



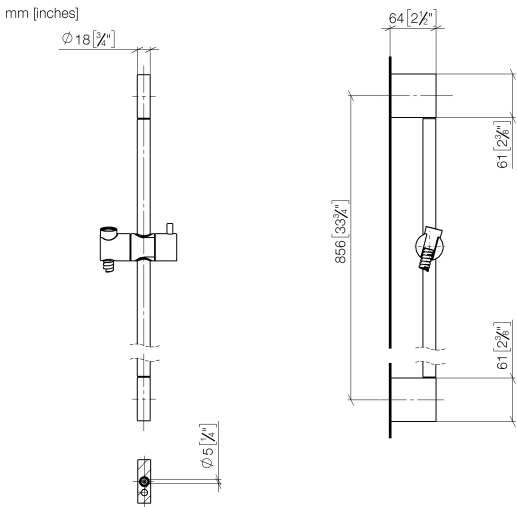
Hand shower - Brushed Bronze 28 018 979-42

Required miscellaneous



Hand shower FlowReduce - Brushed Bronze 28 018 979-42 0010

26 413 979 Product version from 10/1/2023

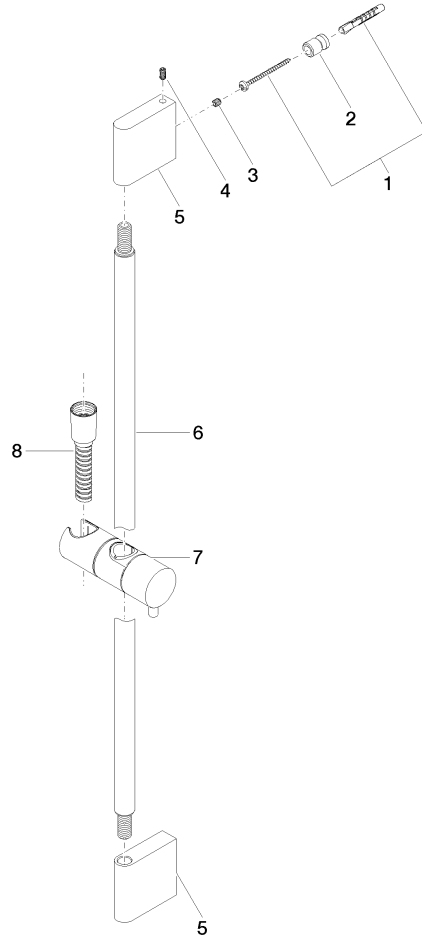


Codes & Standards

ASME A112.18.1 cUPC

Certificates and sustainability

IAPMO_4976



Spare parts list

No.	Item Number	Name	Quantity used	Delivery time
6	90 28 22 597 00-42	holder	1.00	30
8	28 322 970-42	Metal shower hose 1/2" x 3/8" x 1750 mm - Brushed Bronze	1.00	30
7	12 580 970-42	Slide unit - Brushed Bronze	1.00	30
1	05 17 20 726 02 90	fixing set	2.00	2
5	08 17 97 054-42	holder	2.00	60
2	08 17 20 726 90	holder	2.00	2
4	04 31 11 113 00 90	pin	2.00	2
3	09 31 11 049 90	pin	2.00	2