

TARA Showerpipe without hand shower FlowReduce 220 mm - Brushed Dark Platinum

26 633 892 Product version from 4/1/2024



- shower with fixed riser projection 420mm
- overhead shower: rain flow
- rain shower Ø 220 mm
- rain shower with anti-scale system
- max. rainshower flow 7 l/min
- rotary diverter for fixed-riser shower/hand shower
- height of fittings up to rain shower (bottom edge) 1007mm
- height of fittings up to top edge of elbow 1167mm
- rosette for shower holder Ø 55mm
- rosette for wall mounting Ø 57mm
- rosette for shower mixer Ø 65mm
- gauge 150 mm - 13 mm
- 1500 mm metal shower hose
- 1/2" connection
- Pipe diameter 20 mm
- quick clearing
- This product can help a building meet the requirements of Green Building Rating Systems, e.g. LEED®, BREEAM®, DGNB
- WRAS

This article does not include a hand shower!

Intrinsic protection against back flow.

| | | |
|---|--------------------------------|---------------|
|  | Brushed Dark Platinum | 26 633 892-99 |
|  | Chrome | 26 633 892-00 |
|  | Brushed Platinum | 26 633 892-06 |
|  | Platinum | 26 633 892-08 |
|  | Dark Chrome | 26 633 892-19 |
|  | Brushed Durabronze (23kt Gold) | 26 633 892-28 |
|  | Matte Black | 26 633 892-33 |
|  | Brushed Bronze | 26 633 892-42 |
|  | Brushed Champagne (22kt Gold) | 26 633 892-46 |
|  | Champagne (22kt Gold) | 26 633 892-47 |
|  | Brushed Chrome | 26 633 892-93 |

TARA Showerpipe without hand shower FlowReduce 220 mm - Brushed Dark Platinum

26 633 892 Product version from 4/1/2024

Required miscellaneous



Hand shower - Brushed Dark Platinum

28 015 979-99

Required miscellaneous



Hand shower - Brushed Dark Platinum

28 017 979-99

Required miscellaneous



Hand shower - Brushed Dark Platinum

28 016 979-99

Required miscellaneous



Hand shower - Brushed Dark Platinum

28 018 979-99

Required miscellaneous



SERIES-VARIOUS Hand shower FlowReduce - Brushed Dark Platinum

28 029 979-99
0010

Required miscellaneous



SERIES-VARIOUS Hand shower FlowReduce - Brushed Dark Platinum

28 025 979-99
0010

Required miscellaneous



Hand shower FlowReduce - Brushed Dark Platinum

28 016 979-99
0010

Required miscellaneous



Hand shower FlowReduce - Brushed Dark Platinum

28 012 979-99
0010

Required miscellaneous



Hand shower - Brushed Dark Platinum

28 012 979-99

Required miscellaneous



Hand shower FlowReduce - Brushed Dark Platinum

28 018 979-99
0010

Required miscellaneous



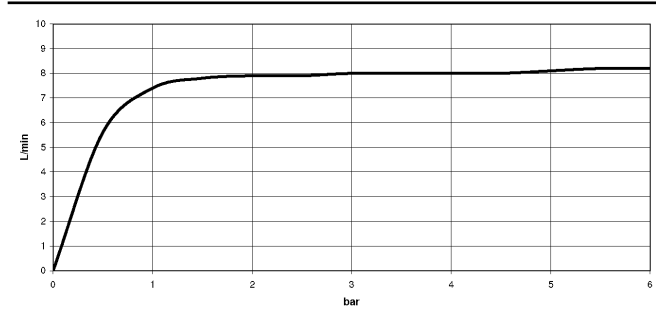
SERIES-VARIOUS Hand shower FlowReduce - Brushed Dark Platinum

28 027 979-99
0010

TARA Showerpipe without hand shower FlowReduce 220 mm - Brushed Dark Platinum

26 633 892 Product version from 4/1/2024

Flow rate chart



Codes & Standards

| | | | |
|-----------------------------|-----------|----------|------------------------|
| DIN 4109 | EN 1717 | ISO 3822 | Scottish Water Byelaws |
| UK Water Supply Regulations | Ü-Zeichen | | |



TARA Showerpipe without hand shower FlowReduce 220 mm - Brushed Dark Platinum

26 633 892 Product version from 4/1/2024

Certificates

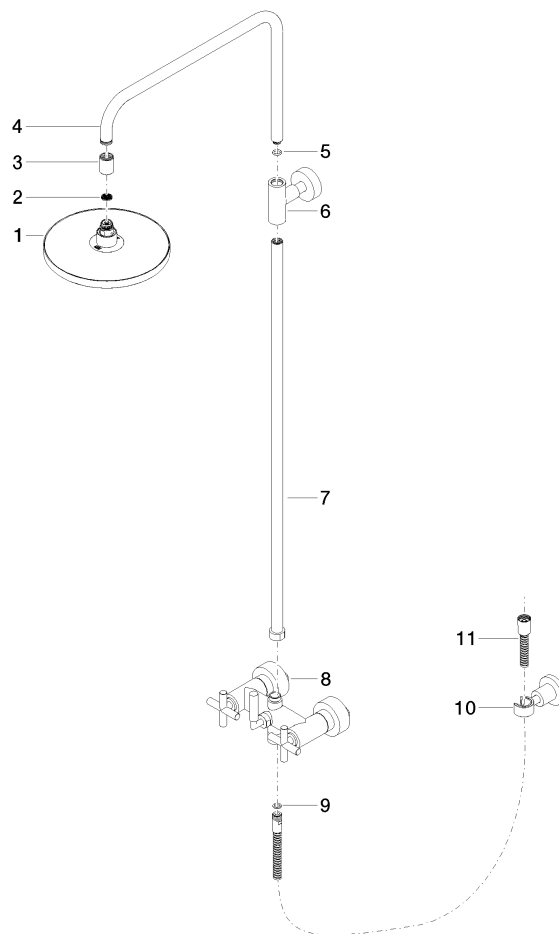
Belgaqua_21-023-2 WRAS_2204

LGA_38

TARA Showerpipe without hand shower FlowReduce 220 mm - Brushed Dark Platinum

26 633 892 Product version from 4/1/2024

Parts for other
finishes can be found
here: [Chrome](#)



Spare parts list

| No. | Item Number | Name | Quantity used | Delivery time |
|-----|--------------------|---|---------------|---------------|
| 1 | 90 12 05 092 20-99 | shower | 1 | 20 |
| 2 | 09 23 01 039 90 | sieve | 1 | 2 |
| 3 | 09 24 03 177 20-99 | adaptor | 1 | 20 |
| 4 | 04 28 22 101 20-99 | spout | 1 | 20 |
| 5 | 90 14 10 011 00 90 | seal | 1 | 2 |
| 6 | 90 17 11 037 00-99 | holder | 1 | 20 |
| 7 | 90 28 22 096 00-99 | pipe | 1 | 20 |
| 8 | 04 17 10 020 01-99 | fitting | 1 | 20 |
| 9 | 90 14 20 026 00 90 | seal | 1 | 2 |
| 10 | 28 050 892-99 | TARA Wall bracket - Brushed Dark Platinum | 1 | 20 |
| 11 | 28 304 970-99 | Metal shower hose 1/2" x 3/8" x 1500 mm - Brushed Dark Platinum | 1 | 20 |