

VAIA Hand shower set with individual rosettes - Platinum

VAIA

27 808 809 Product version from 3/13/2017 to 6/3/2020



- COMPACT RAIN, max. flow rate 15 l/min (at 3 bar)
- 3/8" shower outlet
- metal shower hose 1250mm with integrated anti-twist protection
- with anti-scale system


Technical data:

- rosette for wall elbow Ø 60mm
- rosette for shower holder Ø 60mm
- 1/2" wall elbow

Notes:

- WRAS

Intrinsic protection against back flow.

	Platinum	27 808 809-08
	Chrome	27 808 809-00
	Chrome	27 808 809-00 0010
	Brushed Platinum	27 808 809-06
	Brushed Platinum	27 808 809-06 0010
	Platinum	27 808 809-08 0010
	Dark Chrome	27 808 809-19 0010
	Brushed Durabronze (23kt Gold)	27 808 809-28 0010
	Brushed Durabronze (23kt Gold)	27 808 809-28
	Brushed Dark Bronze	27 808 809-39 0010
	Brushed Dark Bronze	27 808 809-39
	Brushed Bronze	27 808 809-42
	Brushed Bronze	27 808 809-42 0010
	Brushed Champagne (22kt Gold)	27 808 809-46 0010
	Champagne (22kt Gold)	27 808 809-47 0010
	Brushed Dark Platinum	27 808 809-99
	Brushed Dark Platinum	27 808 809-99 0010

Recommended miscellaneous

Concealed wall elbow -

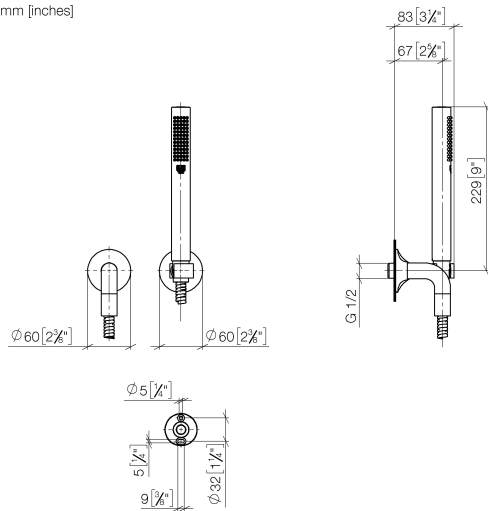
35 085 970 90



- max. recess depth 163 mm
- min. recess depth 90 mm

27 808 809 Product version from 3/13/2017 to 6/3/2020

mm [inches]



Flow rate chart



Codes & Standards

DIN 4109

EN 1717

ISO 3822

Scottish Water
Byelaws

UK Water Supply
Regulations

Ü-Zeichen



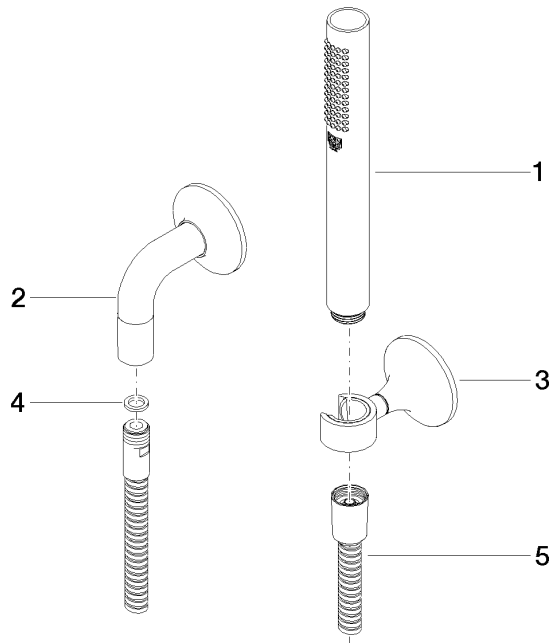
VAIA Hand shower set with individual rosettes - Platinum

VAIA

27 808 809 Product version from 3/13/2017 to 6/3/2020

Certificates and sustainability

LGA_28 LGA_29 Belgaqua_22_280_2 WRAS_1810



Spare parts list

No.	Item Number	Name	Quantity used	Delivery time
5	90 30 02 072 00-08	Metal shower hose 1/2" x 3/8" x 1250 mm - Platinum	1.00	40
3	28 050 809-08	VAIA Wall bracket - Platinum	1.00	40
1	28 019 979-08	Hand shower - Platinum	1.00	-
Spare part can no longer be ordered, please order the replacement item				
2	28 450 809-08	VAIA Wall elbow - Platinum	1.00	40
4	90 14 20 026 00 90	seal	1.00	2