

Wall elbow with integrated shower holder - Platinum

SERIES SPECIFIC

28 490 660 Product version from 10/1/2023



- 3/8" shower outlet
- rosette Ø 60 mm
- 1/2" connection
- WRAS

Intrinsic protection against back flow.

| | | |
|---|-------------------------------------|---------------|
|  | Platinum | 28 490 660-08 |
|  | Chrome | 28 490 660-00 |
|  | Brushed Platinum | 28 490 660-06 |
|  | Dark Chrome | 28 490 660-19 |
|  | Light Gold | 28 490 660-26 |
|  | Brushed Light Gold | 28 490 660-27 |
|  | Brushed Durabronze (23kt Gold) | 28 490 660-28 |
|  | Matte Black | 28 490 660-33 |
|  | Brushed Dark Brass | 28 490 660-39 |
|  | Brushed Bronze | 28 490 660-42 |
|  | Brushed Champagne (22kt Gold) | 28 490 660-46 |
|  | Champagne (22kt Gold) | 28 490 660-47 |
| | Cyprus | 28 490 660-49 |
|  | Brushed Chrome | 28 490 660-93 |
|  | Brushed Dark Platinum | 28 490 660-99 |

Recommended miscellaneous



Concealed wall elbow -

- max. recess depth 163 mm
- min. recess depth 90 mm

35 085 970 90

Recommended miscellaneous



Concealed wall elbow -

- max. recess depth 163 mm
- min. recess depth 90 mm

35 085 970 90

mm [inches]



Flow rate chart



Codes & Standards

| | | |
|---------|------------------------|-----------------------------|
| EN 1717 | Scottish Water Byelaws | UK Water Supply Regulations |
|---------|------------------------|-----------------------------|



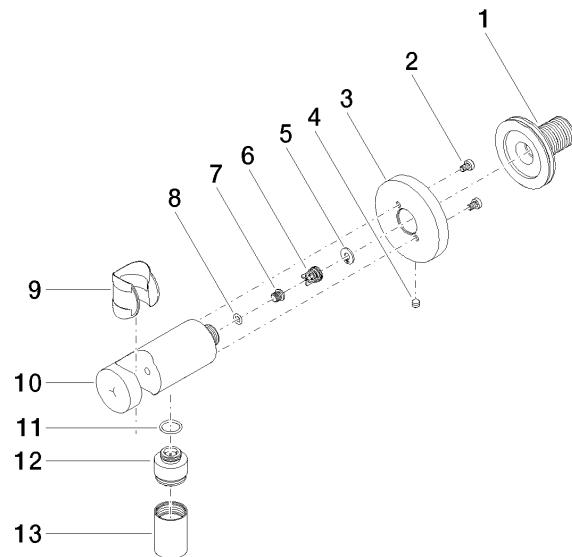
Wall elbow with integrated shower holder - Platinum

SERIES SPECIFIC

28 490 660 Product version from 10/1/2023

Certificates and sustainability

Belgaqua_21-024-2 WRAS_250402



Spare parts list

| No. | Item Number | Name | Quantity used | Delivery time |
|-----|--------------------|---------------------|---------------|---------------|
| 3 | 09 27 66 001-08 | rosette | 1.00 | 40 |
| 6 | 09 23 01 131 90 | back-flow preventer | 1.00 | 2 |
| 5 | 09 16 01 023 90 | ring | 1.00 | 2 |
| 10 | 09 11 03 124-08 | connection | 1.00 | 40 |
| 7 | 09 30 30 113 20 90 | screw | 1.00 | 2 |
| 12 | 09 24 03 279-08 | nipple | 1.00 | 40 |
| 1 | 90 24 03 280 00 90 | nipple | 1.00 | 2 |
| 9 | 09 18 40 216 90 | sleeve | 1.00 | 2 |
| 2 | 09 30 30 037 90 | screw | 2.00 | 2 |
| 8 | 09 14 10 001 90 | seal | 1.00 | 2 |
| 11 | 09 14 10 213 90 | seal | 1.00 | 2 |
| 4 | 09 31 11 112 90 | pin | 1.00 | 60 |
| 13 | 90 21 02 069 00-08 | cover | 1.00 | 40 |