

Body spray without volume control - Brushed Platinum

SERIES SPECIFIC

28 528 782 Product version from 6/1/2024



- spray head Ø 55mm
- ball-joint pivotable through 25° (in any direction)
- HORIZONTAL RAIN, max. flow rate 7 l/min (at 3 bar)
- anti-scale system
- rosette 60 x 60 mm
- 1/2" connection
- WRAS

	Brushed Platinum	28 528 782-06
	Chrome	28 528 782-00
	Platinum	28 528 782-08
	Dark Chrome	28 528 782-19
	Brushed Light Gold	28 528 782-27
	Brushed Durabrass (23kt Gold)	28 528 782-28
	Matte Black	28 528 782-33
	Brushed Champagne (22kt Gold)	28 528 782-46
	Champagne (22kt Gold)	28 528 782-47
	Brushed Chrome	28 528 782-93
	Brushed Dark Platinum	28 528 782-99

Recommended miscellaneous



- Concealed wall elbow -

•max. recess depth 163 mm

•min. recess depth 90 mm

35 085 970 90

28 528 782 Product version from 6/1/2024

mm [inches]



Flow rate chart



Codes & Standards

DIN 4109

ISO 3822

Scottish Water
Byelaws

UK Water Supply
Regulations

Ü-Zeichen



Body spray without volume control - Brushed Platinum

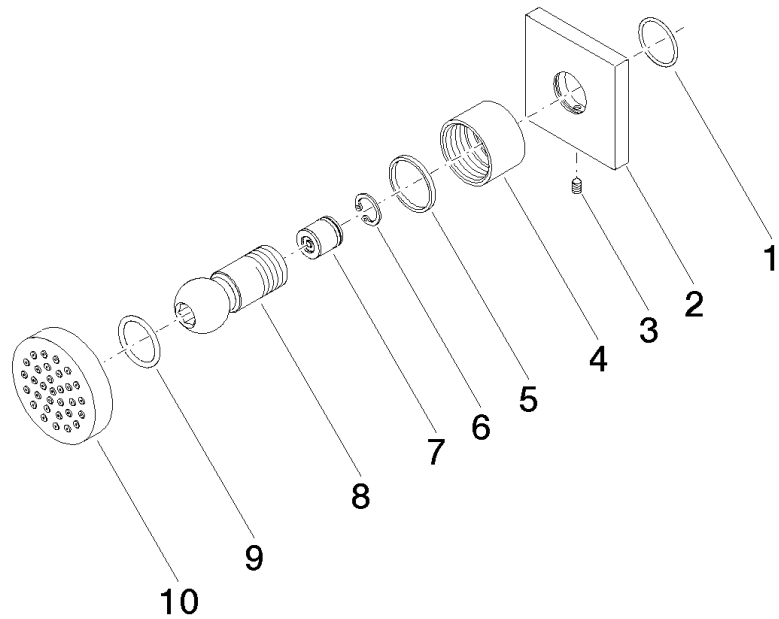
SERIES SPECIFIC

28 528 782 Product version from 6/1/2024

Certificates and sustainability

LGA_38

WRAS_240602



Spare parts list

No.	Item Number	Name	Quantity used	Delivery time
6	09 16 01 014 90	ring	1.00	2
5	09 14 15 010 90	ring	1.00	2
7	90 23 01 147 00 90	back-flow preventer	1.00	2
8	09 21 40 016-06	connection	1.00	10
3	09 31 11 048 90	pin	1.00	2
1	09 14 10 098 90	seal	1.00	2
4	09 23 30 026-06	nut	1.00	10
10	90 12 05 027 00-06	casing (completely)	1.00	10
9	09 14 10 015 90	seal	1.00	2
2	09 27 98 003-06	rosette	1.00	10