

## Body spray without volume control - Chrome

## SERIES SPECIFIC

28 528 979 Product version from 10/1/2023



- spray head Ø 55mm
- ball-joint pivotable through 25° (in any direction)
- HORIZONTAL RAIN, max. flow rate 7 l/min (at 3 bar)
- with anti-scale system
- rosette Ø 55 mm
- 1/2" connection
- WRAS

|  |                                |               |
|--|--------------------------------|---------------|
|  | Chrome                         | 28 528 979-00 |
|  | Brushed Platinum               | 28 528 979-06 |
|  | Platinum                       | 28 528 979-08 |
|  | Durabronze (23kt Gold)         | 28 528 979-09 |
|  | Dark Chrome                    | 28 528 979-19 |
|  | Light Gold                     | 28 528 979-26 |
|  | Brushed Light Gold             | 28 528 979-27 |
|  | Brushed Durabronze (23kt Gold) | 28 528 979-28 |
|  | Matte Black                    | 28 528 979-33 |
|  | Brushed Dark Brass             | 28 528 979-39 |
|  | Brushed Bronze                 | 28 528 979-42 |
|  | Brushed Champagne (22kt Gold)  | 28 528 979-46 |
|  | Champagne (22kt Gold)          | 28 528 979-47 |
|  | Brushed Chrome                 | 28 528 979-93 |
|  | Brushed Dark Platinum          | 28 528 979-99 |

## Recommended miscellaneous



- Concealed wall elbow -** 35 085 970 90
- max. recess depth 163 mm
  - min. recess depth 90 mm

mm [inches]



Flow rate chart



Codes & Standards

DIN 4109

ISO 3822

Scottish Water  
Byelaws

UK Water Supply  
Regulations

Ü-Zeichen



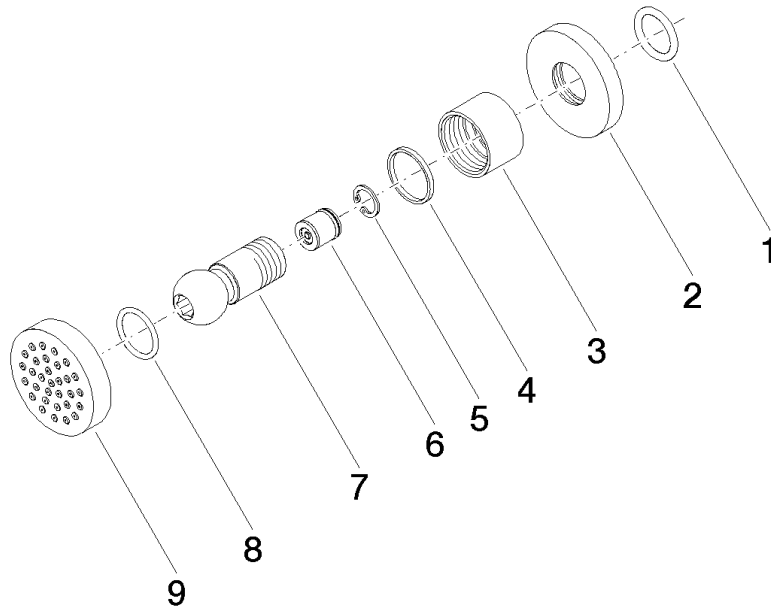
Body spray without volume control - Chrome

SERIES SPECIFIC

28 528 979 Product version from 10/1/2023

Certificates and sustainability

LGA\_38 WRAS\_240602



## Spare parts list

| No. | Item Number        | Name                  | Quantity used | Delivery time |
|-----|--------------------|-----------------------|---------------|---------------|
| 4   | 09 14 15 010 90    | ring                  | 1.00          | 2             |
| 6   | 90 23 01 147 00 90 | back-flow preventer   | 1.00          | 2             |
| 3   | 09 23 30 026-00    | nut                   | 1.00          | 10            |
| 5   | 09 16 01 014 90    | ring                  | 1.00          | 2             |
| 9   | 90 12 05 027 00-00 | casing ( completely ) | 1.00          | 10            |
| 1   | 90 14 10 026 00 90 | seal                  | 1.00          | 2             |
| 8   | 09 14 10 015 90    | seal                  | 1.00          | 2             |
| 7   | 09 21 40 016-00    | connection            | 1.00          | 10            |
| 2   | 09 27 22 019-00    | rosette               | 1.00          | 10            |