



LULU Rain shower with wall fixing 300 x 240 mm - Chrome

28 786 710 Product version from 3/13/2017



- 450mm projection
- rain shower 300 x 240mm
- PURE RAIN, max. flow rate 20 l/min (at 3 bar)
- Function from: 12 l/min
- rosette 78 x 60 mm
- 1/2" connection
- with anti-scale system
- quick clearing
- WRAS

Product change as of 1st April 2024: max. flow 20l/min

| | | |
|---|------------------|---------------|
|  | Chrome | 28 786 710-00 |
|  | Brushed Platinum | 28 786 710-06 |

Recommended miscellaneous



- Concealed wall elbow -

•max. recess depth mm

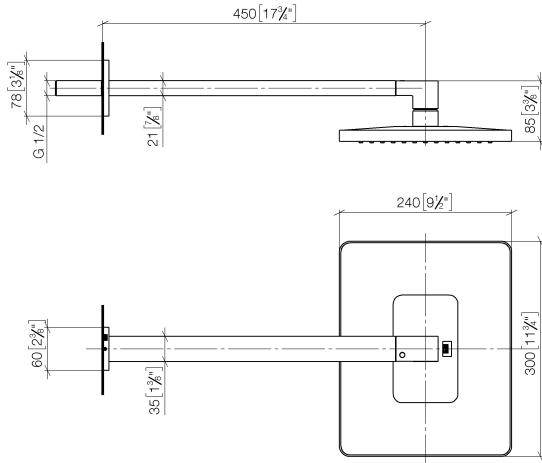
•min. recess depth mm

35 085 970 90

LULU Rain shower with wall fixing 300 x 240 mm - Chrome

28 786 710 Product version from 3/13/2017

mm [inches]



Flow rate chart



Codes & Standards

DIN 4109

ISO 3822

Scottish Water
Byelaws

UK Water Supply
Regulations

Ü-Zeichen



LULU Rain shower with wall fixing 300 x 240 mm - Chrome

28 786 710 Product version from 3/13/2017

Certificates

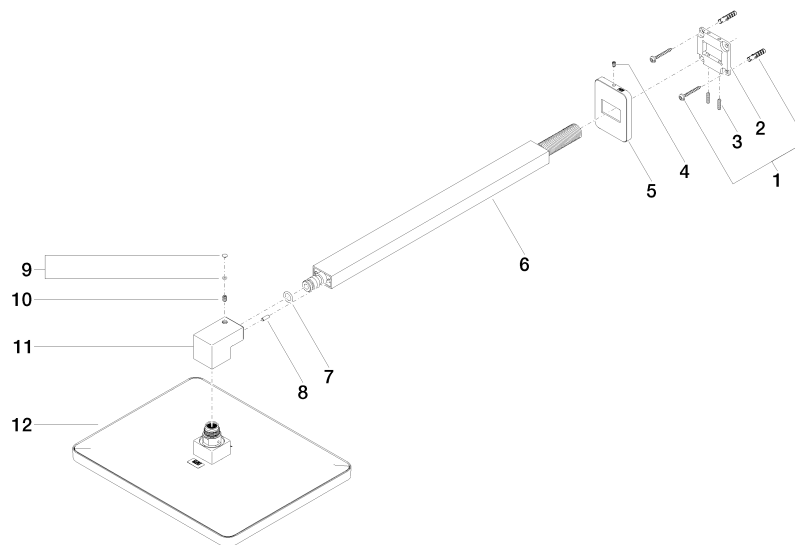
LGA_29

WRAS_2212

LGA_38

LULU Rain shower with wall fixing 300 x 240 mm - Chrome

28 786 710 Product version from 3/13/2017



Spare parts list

| No. | Item Number | Name | Quantity used | Delivery time |
|-----|--------------------|------------|---------------|---------------|
| 1 | 04 30 31 032 00 90 | fixing set | 1 | 2 |
| 2 | 09 30 11 160 90 | disc | 1 | 2 |
| 3 | 09 31 11 084 90 | pin | 2 | 2 |
| 4 | 09 31 11 048 90 | pin | 1 | 2 |
| 5 | 09 27 71 019-00 | rosette | 1 | 10 |
| 6 | 04 28 22 247 20-00 | pipe | 1 | 10 |
| 7 | 90 14 10 011 00 90 | seal | 1 | 2 |
| 8 | 09 31 11 040 90 | pin | 1 | 2 |
| 9 | 90 31 20 087 00-00 | plug | 1 | 10 |
| 10 | 09 31 11 036 90 | pin | 1 | 2 |
| 11 | 09 17 01 180-00 | connection | 1 | 10 |
| 12 | 04 12 05 062 00-00 | shower | 1 | 10 |