

CL.1 Two-way diverter - Chrome

CL.1

29 126 705



- rotary diverter
 - hole diameter 37 mm
 - rosette 60 x 60 mm
 - 1/2" connection
 - max. flow 23.5 l/min at 3 bar flow pressure
- Not suitable for combining with Perfecto (12 614 970 90).**

Not suitable for combining with Perfecto (12 614 970 90).

Required miscellaneous



Hose set -

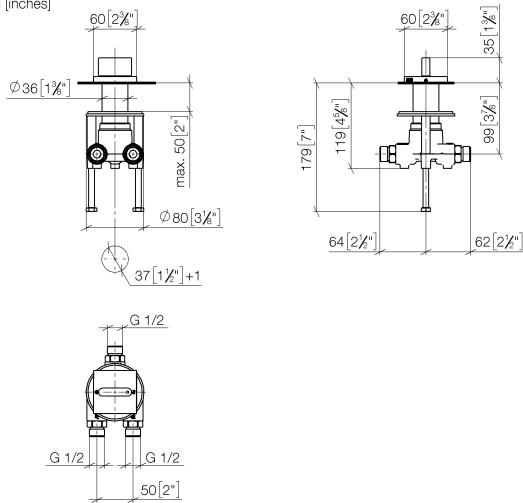
12 509 970 90

CL.1 Two-way diverter - Chrome

CL.1

29 126 705

mm [inches]



Flow rate chart



Codes & Standards

ASME A112.18.1

cUPC

DIN 4109

ISO 3822

Ü-Zeichen



CL.1 Two-way diverter - Chrome

CL.1

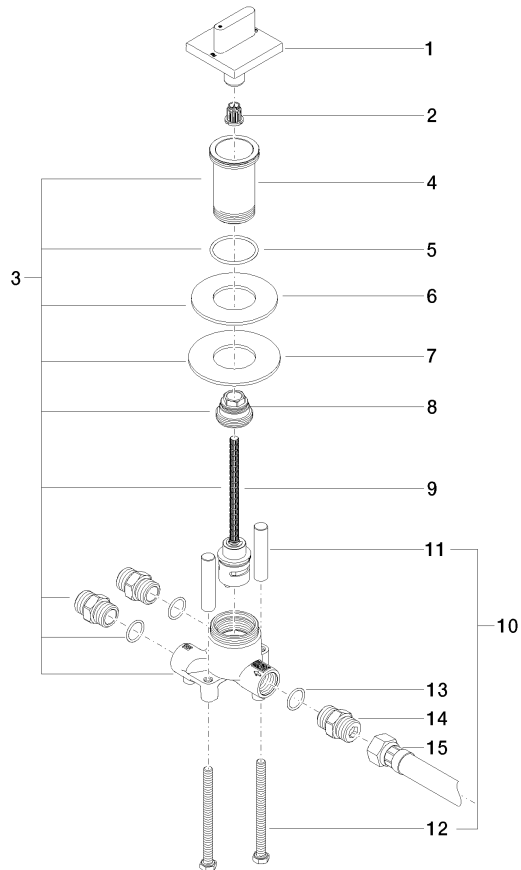
29 126 705

Certificates

LGA_18

IAPMO_4976

Product version from 3/9/2015





CL.1 Two-way diverter - Chrome

CL.1

29 126 705

Spare parts list

Product version from 3/9/2015

No.	Item Number	Name	Quantity used	Delivery time
	90 20 70 052 01-00	handle	21	10