








MEM Single-lever basin mixer - Platinum

MEM

29 210 782 Product version from 3/10/2014 to 3/18/2019



- hole diameter 35 mm
- rosette 60 x 60 mm
- 3x screw-in M 10 x 1 pressure hose, leak-tested

	Platinum	29 210 782-08
	Brushed Platinum	29 210 782-06
	Dark Chrome	29 210 782-19
	Brushed Durabronze (23kt Gold)	29 210 782-28
	Brushed Champagne (22kt Gold)	29 210 782-46
	Champagne (22kt Gold)	29 210 782-47
	Brushed Dark Platinum	29 210 782-99

MEM Single-lever basin mixer - Platinum

MEM

29 210 782 Product version from 3/10/2014 to 3/18/2019

mm [inches]



Flow rate chart



Codes & Standards

DIN 4109

Executive Order
no. 1007

ISO 3822

Ü-Zeichen



MEM Single-lever basin mixer - Platinum

MEM

29 210 782 Product version from 3/10/2014 to 3/18/2019

Certificates and sustainability

LGA_28

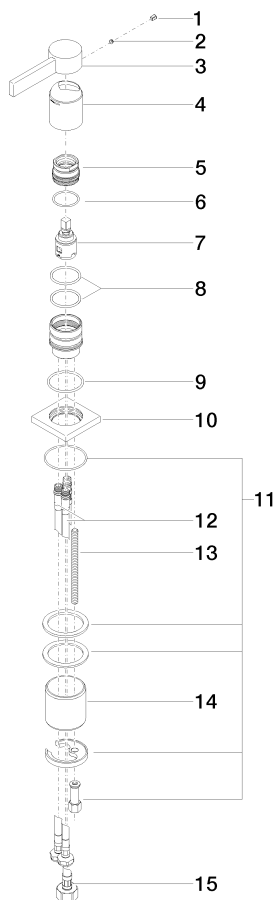
GDV_0400

MEM Single-lever basin mixer - Platinum

MEM

29 210 782 Product version from 3/10/2014 to 3/18/2019

Parts for other
finishes can be found
here: Brushed
Platinum



Spare parts list

No.	Item Number	Name	Quantity used	Delivery time
	15 04 30 04 019 00 90	hose	1.00	2
	8 09 14 10 192 90	seal	2.00	2
	9 09 14 10 067 90	seal	1.00	2
	6 09 14 10 137 90	seal	1.00	2
	5 09 24 04 288 90	nut	1.00	2
	10 09 27 78 040-08	rosette	1.00	40
	14 09 18 40 079 90	sleeve	1.00	2
	3 09 20 78 057-08	handle	1.00	40
	4 09 11 02 289-08	cover	1.00	40
	7 90 15 05 042 00 90	cartridge	1.00	2
	12 04 30 04 104 00 90	hose	2.00	2
	11 04 30 11 038 02 90	fixing set	1.00	2
	13 09 31 11 012 90	pin	1.00	2
	2 90 31 11 063 00 90	pin	1.00	2
	1 90 31 20 109 00 90	plug	1.00	2