

## CYO Two-hole basin mixer without pop-up waste - Chrome








CYO

29 218 811

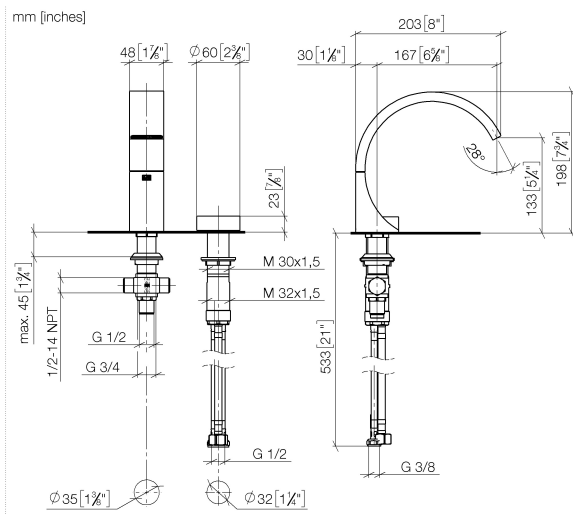


- 167mm projection
- fixed spout
- rectangular, air-enriched flow
- height of mixer 198 mm
- height up to aerator 133 mm
- hole diameter spout 35 mm
- hole diameter valve 32 mm
- handle Ø 60mm
- 2x screw-in M 8 x 1 pressure hose, leak-tested
- 1x screw-in M 10 x 1 pressure hose, leak-tested
- max. flow 4.5 l/min
- progressive cartridge
- lead-free
- This product can help a building meet the requirements of Green Building Rating Systems, e.g. LEED®, BREEAM®, DGNB
- WRAS

NOTE: The handle inserts must be ordered separately from the fittings!

	Chrome	29 218 811-00
	Brushed Platinum	29 218 811-06
	Dark Chrome	29 218 811-19
	Brushed Durabronze (23kt Gold)	29 218 811-28
	Platinum / Brushed Platinum	29 218 811-36
	Durabronze / Brushed Durabronze (23kt Gold)	29 218 811-38
	Brushed Dark Platinum	29 218 811-99

29 218 811



Flow rate chart



### Codes & Standards

DIN 4109

ISO 3822

Scottish Water  
Byelaws

UK Water Supply  
Regulations

Ü-Zeichen



## CYO Two-hole basin mixer without pop-up waste - Chrome

---

CYO

29 218 811

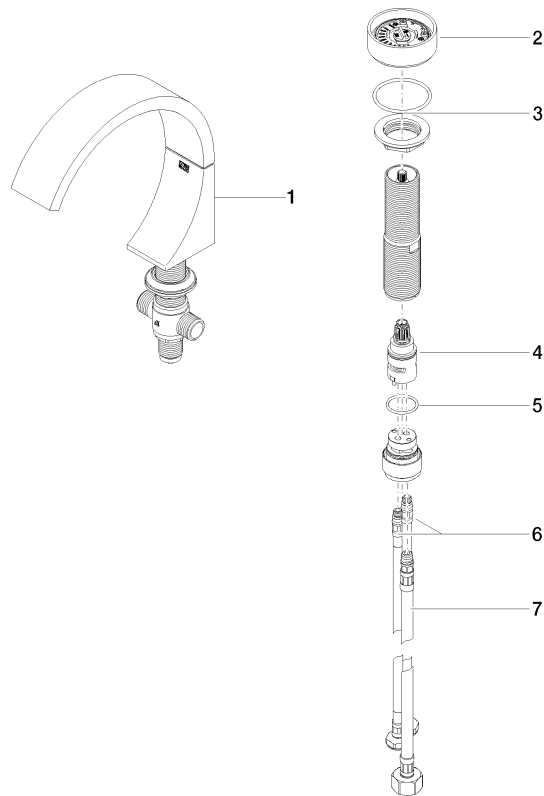
Certificates and sustainability

---

WRAS\_2201

LGA\_38

29 218 811



## Spare parts list

No.	Item Number	Name	Quantity used	Delivery time
5	09 14 10 112 90	seal	1.00	2
1	13 717 811-00	CYO Deck-mounted basin spout without pop-up waste - Chrome	1.00	10
2	90 18 40 290 00-00	handle	1.00	10
3	04 30 11 038 67 90	fixing set	1.00	2
4	90 90 03 169 00 90	top	1.00	2
6	04 30 04 100 00 90	hose	2.00	2
7	04 30 04 019 00 90	hose	1.00	2