

## CYO Two-hole basin mixer without pop-up waste - Brushed Dark Platinum



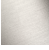




CYO

29 218 811



- 167mm projection
- fixed spout
- rectangular, air-enriched flow
- height of mixer 198 mm
- height up to aerator 133 mm
- hole diameter spout 35 mm
- hole diameter valve 32 mm
- handle Ø 60mm
- 2x screw-in M 8 x 1 pressure hose, leak-tested
- 1x screw-in M 10 x 1 pressure hose, leak-tested
- max. flow 4.5 l/min
- progressive cartridge
- lead-free
- This product can help a building meet the requirements of Green Building Rating Systems, e.g. LEED®, BREEAM®, DGNB
- WRAS 2201012

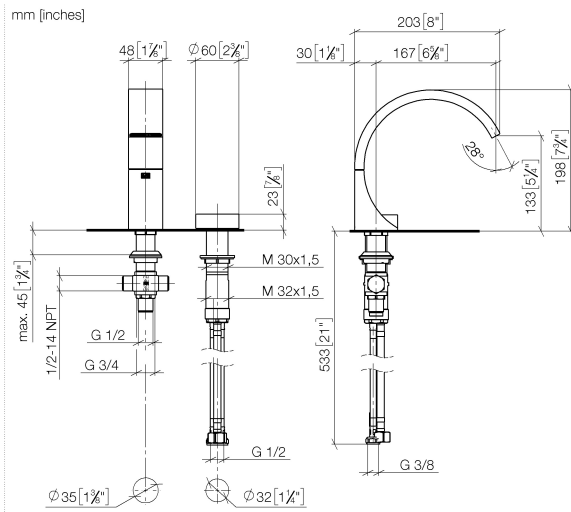
NOTE: The handle inserts must be ordered separately from the fittings!

	Brushed Dark Platinum	29 218 811-99
	Chrome	29 218 811-00
	Brushed Platinum	29 218 811-06
	Dark Chrome	29 218 811-19
	Brushed Durabronze (23kt Gold)	29 218 811-28
	Platinum / Brushed Platinum	29 218 811-36
	Durabronze / Brushed Durabronze (23kt Gold)	29 218 811-38

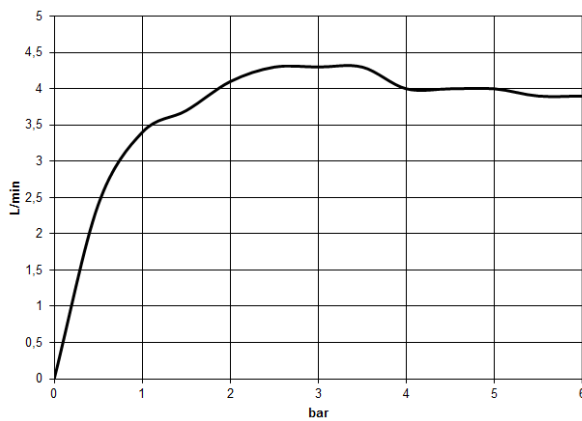
CYO Two-hole basin mixer without pop-up waste - Brushed Dark Platinum

CYO

29 218 811



### Flow rate chart



## Codes & Standards

DIN 4109

ISO 3822

## Scottish Water Byelaws

UK Water Supply Regulations

## Ü-Zeichen



## CYO Two-hole basin mixer without pop-up waste - Brushed Dark Platinum

---

CYO

29 218 811

### Certificates

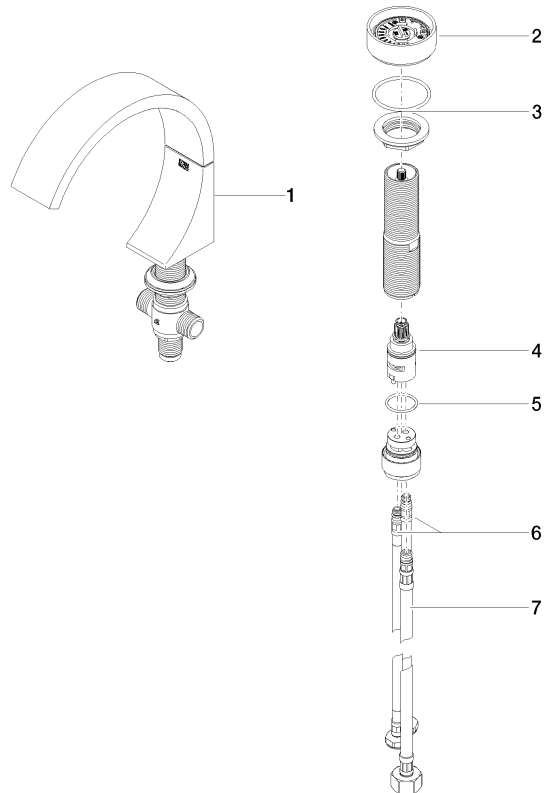
---

LGA\_38

WRAS\_2201

29 218 811

Parts for other  
finishes can be found  
here: [Chrome](#)





## CYO Two-hole basin mixer without pop-up waste - Brushed Dark Platinum

CYO

29 218 811

### Spare parts list

No.	Item Number	Name	Quantity used	Delivery time
	13 717 811-99	CYO Deck-mounted basin spout without pop-up waste - Brushed Dark Platinum	8	30