

TARA ULTRA POT FILLER Cold-water valve - Dark Chrome

TARA ULTRA

30 805 875



- 500mm projection
- pivoting spout
- laminar flow
- cold water only
- max. flow 5.7 l/min at 3 bar flow pressure
- min. recess depth 125 mm
- max. recess depth 80 mm
- lead-free
- This product can help a building meet the requirements of Green Building Rating Systems, e.g. LEED®, BREEAM®, DGNB

| | | |
|--|--------------------------------|---------------|
|  | Dark Chrome | 30 805 875-19 |
|  | Chrome | 30 805 875-00 |
|  | Brushed Platinum | 30 805 875-06 |
|  | Platinum | 30 805 875-08 |
|  | Durabronze (23kt Gold) | 30 805 875-09 |
|  | Brushed Durabronze (23kt Gold) | 30 805 875-28 |
|  | Brushed Champagne (22kt Gold) | 30 805 875-46 |
|  | Champagne (22kt Gold) | 30 805 875-47 |
|  | Brushed Chrome | 30 805 875-93 |
|  | Brushed Dark Platinum | 30 805 875-99 |

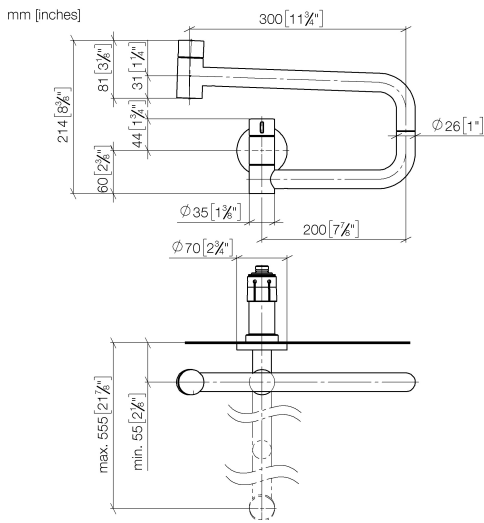
Required miscellaneous

POT FILLER Concealed wall elbow 35 087 970 90

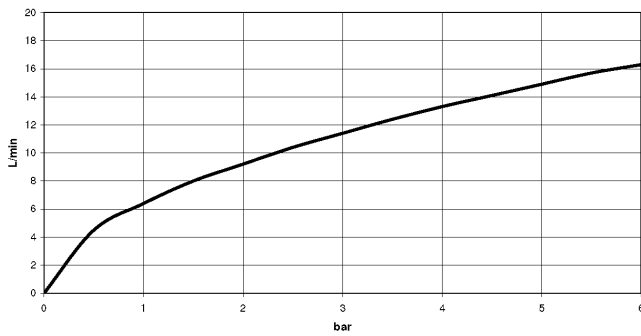


- max. recess depth 125 mm
- min. recess depth 80 mm

30 805 875



Flow rate chart



Codes & Standards

DIN 4109

ISO 3822

NSF372

NSF61

Ü-Zeichen



TARA ULTRA POT FILLER Cold-water valve - Dark Chrome

TARA ULTRA

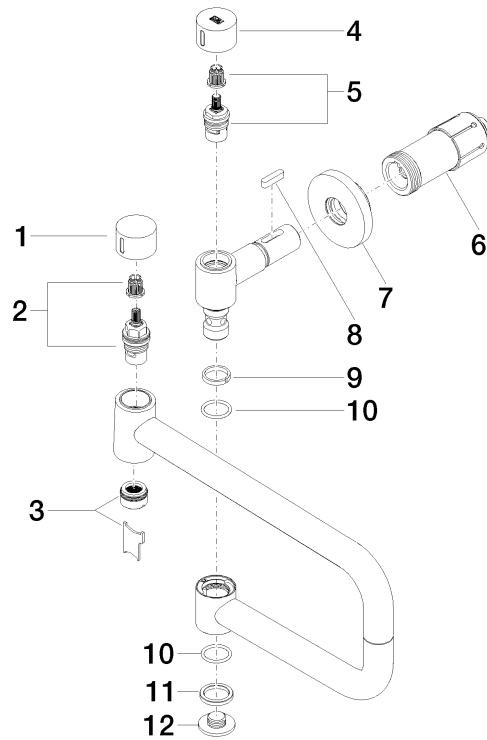
30 805 875

Certificates

IAPMO_N-4

IAPMO_6

LGA_29





TARA ULTRA POT FILLER Cold-water valve - Dark Chrome

TARA ULTRA

30 805 875

Spare parts list