

LOT BAR TAP Two-hole mixer with individual rosettes - Brushed Champagne (22kt Gold)


LOT

|            |  |   |
|------------|--|---|
| 32 805 680 | <ul style="list-style-type: none"> <li>• 165mm projection</li> <li>• pivotable spout 360°</li> <li>• air-enriched flow</li> <li>• height of mixer 230 mm</li> <li>• height up to laminar flow regulator 205 mm</li> <li>• individual rosette 55 x 55 mm</li> <li>• hole diameter spout 35 mm</li> <li>• single-lever mixer hole diameter 44 mm</li> <li>• max. flow 8 l/min at 3 bar flow pressure</li> <li>• lead-free</li> <li>• WRAS 1909073</li> <li>• This product can help a building meet the requirements of Green Building Rating Systems, e.g. LEED®, BREEAM®, DGNB</li> </ul> <p>Operating unit can be positioned freely.</p> | <div>  <div> Brushed Champagne (22kt Gold) 32 805 680-46 </div> </div> <div>  <div> Chrome 32 805 680-00 </div> </div> <div>  <div> Brushed Platinum 32 805 680-06 </div> </div> <div>  <div> Platinum 32 805 680-08 </div> </div> <div>  <div> Dark Chrome 32 805 680-19 </div> </div> <div>  <div> Brushed Durabronze (23kt Gold) 32 805 680-28 </div> </div> <div>  <div> Champagne (22kt Gold) 32 805 680-47 </div> </div> <div>  <div> Brushed Dark Platinum 32 805 680-99 </div> </div> |
|------------|--|---|

Recommended miscellaneous

|   |   |
|---|---|
|  | <div> Dispenser with rosette - Brushed Champagne (22kt Gold) 82 439 970-46 </div> |
|---|---|

Recommended miscellaneous

|   |   |
|---|---|
|  | <div> Strainer waste with control handle - Brushed Champagne (22kt Gold) 10 711 970-46 </div> |
|---|---|

## LOT BAR TAP Two-hole mixer with individual rosettes - Brushed Champagne (22kt Gold)

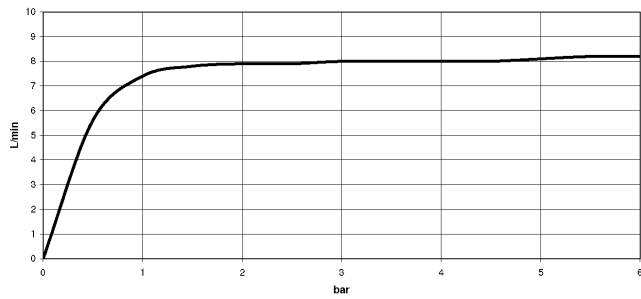
LOT

32 805 680

mm [inches]



### Flow rate chart



### Certificates

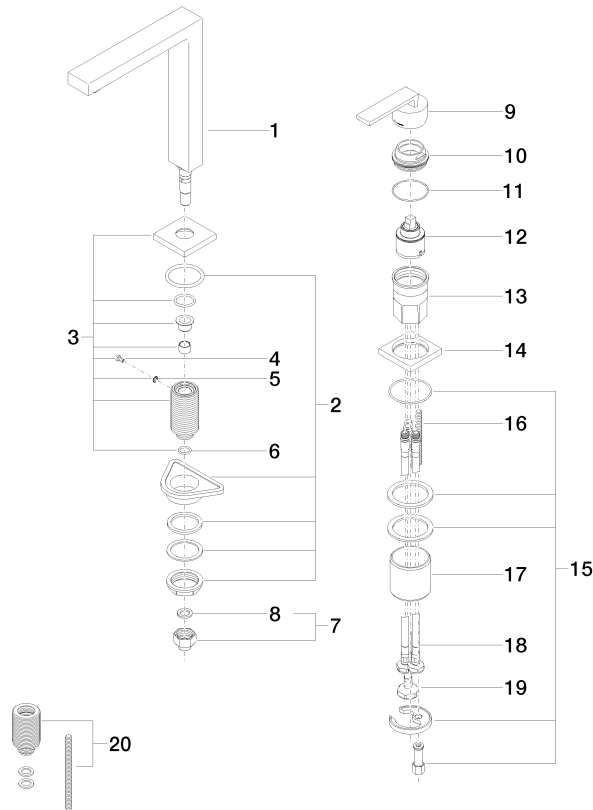
GDV\_0400283.

LGA\_18887.

# LOT BAR TAP Two-hole mixer with individual rosettes - Brushed Champagne (22kt Gold)

LOT

32 805 680  
Parts for other  
finishes can be found  
here: [Chrome](#)



## Spare parts list

| No. | Item Number        | Name            | Quantity used | Delivery time |
|-----|--------------------|-----------------|---------------|---------------|
| 1   | 90 11 06 192 04-46 | spout           | 1             | 30            |
| 2   | 04 23 10 044 01 90 | fixing set      | 1             | 2             |
| 3   | 90 27 78 023 00-46 | rosette         | 1             | 30            |
| 4   | 09 30 30 057 90    | screw           | 1             | 2             |
| 5   | 09 30 11 028 90    | disc            | 1             | 2             |
| 6   | 90 14 10 077 00 90 | seal            | 1             | 2             |
| 7   | 04 24 04 166 10 90 | nipple          | 1             | 2             |
| 8   | 90 14 20 002 00 90 | seal            | 1             | 2             |
| 9   | 90 20 78 040 00-46 | handle          | 1             | 30            |
| 10  | 09 24 04 142-46    | nut             | 1             | 30            |
| 11  | 09 14 10 037 90    | seal            | 1             | 2             |
| 12  | 90 15 05 045 00 90 | cartridge       | 1             | 2             |
| 13  | 09 30 01 100 10 90 | sleeve          | 1             | 2             |
| 14  | 09 27 78 007-46    | rosette         | 1             | 30            |
| 15  | 04 30 11 038 02 90 | fixing set      | 1             | 2             |
| 16  | 09 31 11 011 90    | pin             | 1             | 2             |
| 17  | 09 18 40 079 90    | sleeve          | 1             | 2             |
| 18  | 04 30 04 104 00 90 | hose            | 2             | 2             |
| 19  | 04 30 04 019 00 90 | hose            | 1             | 2             |
| 20  | 12 802 970 90      | Extension set - | 1             | 60            |