

TARA ULTRA Two-hole mixer with individual rosettes - Chrome

TARA ULTRA

32 815 875 Product version from 1/1/2025



- 241mm projection
- pivotable spout 360°
- Optional swivel limiter available with swivel limiter set 12 820 970 90
- air-enriched flow
- max. flow 8 l/min at 3 bar flow pressure
- lead-free
- This product can help a building meet the requirements of Green Building Rating Systems, e.g. LEED®, BREEAM®, DGNB
- WRAS

Operating unit can be positioned freely.

| | | |
|--|--------------------------------|---------------|
| | Chrome | 32 815 875-00 |
| | Brushed Platinum | 32 815 875-06 |
| | Platinum | 32 815 875-08 |
| | Durabronze (23kt Gold) | 32 815 875-09 |
| | Dark Chrome | 32 815 875-19 |
| | Brushed Durabronze (23kt Gold) | 32 815 875-28 |
| | Matte Black | 32 815 875-33 |
| | Brushed Bronze | 32 815 875-42 |
| | Brushed Champagne (22kt Gold) | 32 815 875-46 |
| | Champagne (22kt Gold) | 32 815 875-47 |
| | Brushed Chrome | 32 815 875-93 |
| | Brushed Dark Platinum | 32 815 875-99 |

Recommended miscellaneous

Swivel limitation set - 12 820 970 90



Recommended miscellaneous

Dispenser with rosette - Chrome 82 444 970-00



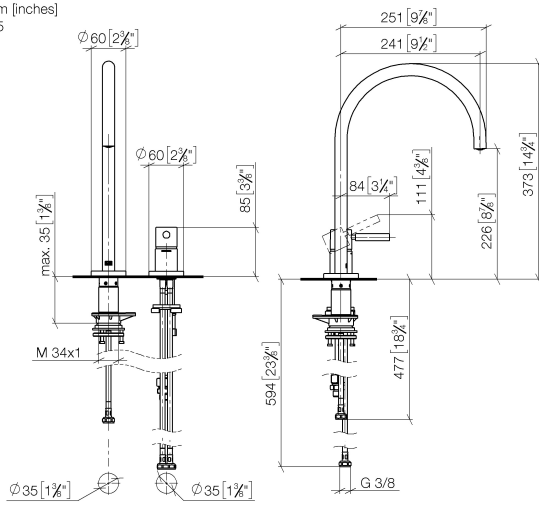
Recommended miscellaneous

Strainer waste with control handle - Chrome 10 710 970-00



32 815 875 Product version from 1/1/2025

mm [inches]
1:5



Flow rate chart



Codes & Standards

DIN 4109

ISO 3822

Scottish Water
Byelaws

UK Water Supply
Regulations

Ü-Zeichen



TARA ULTRA Two-hole mixer with individual rosettes - Chrome

TARA ULTRA

32 815 875 Product version from 1/1/2025

Certificates and sustainability

LGA_38

WRAS_240102



Spare parts list

| No. | Item Number | Name | Quantity used | Delivery time |
|-----|--------------------|-------------------------|---------------|---------------|
| 4 | 04 23 10 044 08 90 | fixing set | 1.00 | 2 |
| 11 | 09 14 10 110 90 | seal | 1.00 | 2 |
| 13 | 09 31 11 011 90 | pin | 1.00 | 2 |
| 14 | 04 30 11 085 97 90 | fixing set | 1.00 | 2 |
| 6 | 90 20 87 003 00-00 | handle | 1.00 | 10 |
| 2 | 12 820 970 90 | Swivel limitation set - | 1.00 | 2 |
| 1 | 90 28 22 377 00-00 | spout | 1.00 | 10 |
| 8 | 09 14 10 091 90 | seal | 1.00 | 2 |
| 10 | 90 15 05 042 00 90 | cartridge | 1.00 | 2 |
| 3 | 90 30 01 299 00 90 | shaft | 1.00 | 2 |
| 5 | 04 30 04 100 00 90 | hose | 1.00 | 2 |
| 16 | 04 30 04 105 00 90 | hose | 2.00 | 2 |
| 15 | 04 30 04 104 00 90 | hose | 1.00 | 2 |
| 12 | 09 27 97 040-00 | rosette | 1.00 | 10 |
| 9 | 09 24 04 266 90 | nut | 1.00 | 2 |
| 17 | 90 24 03 250 00 90 | nipple | 1.00 | 2 |
| 7 | 09 28 30 026-00 | cover | 1.00 | 10 |