



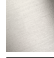




## LOT Two-hole mixer with cover plate - Brushed Champagne (22kt Gold)

LOT

32 843 680



- 235mm projection
- pivotable spout 360°
- air-enriched flow
- height of mixer 345 mm
- height up to aerator 319 mm
- cover plate 126 x 55 mm
- hole diameter spout 35 mm
- single-lever mixer hole diameter 44 mm
- gauge 71 mm
- max. flow 8 l/min at 3 bar flow pressure
- lead-free
- WRAS 1909073
- This product can help a building meet the requirements of Green Building Rating Systems, e.g. LEED®, BREEAM®, DGNB

|  |                                |               |
|--|--------------------------------|---------------|
|  | Brushed Champagne (22kt Gold)  | 32 843 680-46 |
|  | Chrome                         | 32 843 680-00 |
|  | Brushed Platinum               | 32 843 680-06 |
|  | Platinum                       | 32 843 680-08 |
|  | Dark Chrome                    | 32 843 680-19 |
|  | Brushed Durabronze (23kt Gold) | 32 843 680-28 |
|  | Champagne (22kt Gold)          | 32 843 680-47 |
|  | Brushed Dark Platinum          | 32 843 680-99 |

### Recommended miscellaneous

**Dispenser with rosette - Brushed Champagne (22kt Gold)** 82 439 970-46

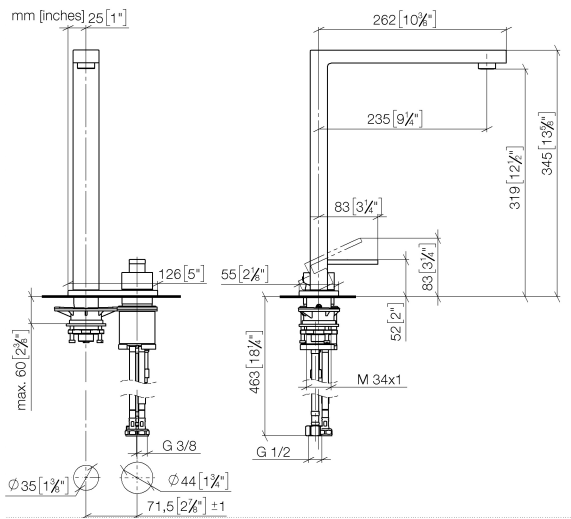


### Recommended miscellaneous

**Strainer waste with control handle - Brushed Champagne (22kt Gold)** 10 711 970-46



32 843 680



Flow rate chart



## Codes & Standards

DIN 4109

Executive Order  
no. 1007

ISO 3822

Ü-Zeichen



## LOT Two-hole mixer with cover plate - Brushed Champagne (22kt Gold)

---

LOT

32 843 680

### Certificates

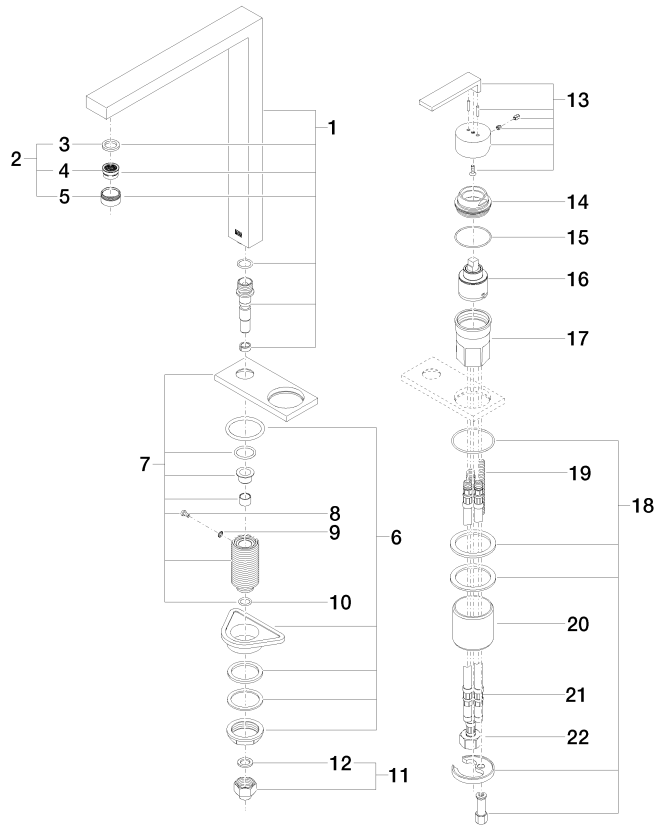
---

LGA\_18

GDV\_0400

**Product version from 6/1/2022**

Parts for other  
finishes can be found  
here: [Chrome](#)





LOT Two-hole mixer with cover plate - Brushed Champagne (22kt Gold)

---

LOT

32 843 680

## **Spare parts list**

**Product version from 6/1/2022**