

LULU Single-lever bath mixer for wall mounting without shower set - Chrome


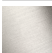
LULU

33 200 710 Product version from 3/31/2009 to 3/19/2019



- 190mm projection
- circular normal flow
- automatic bath/shower diverter
- 3/8" shower outlet
- 1/2" connection
- gauge 150 mm - 10 mm
- max. flow 17.8 l/min at 3 bar flow pressure

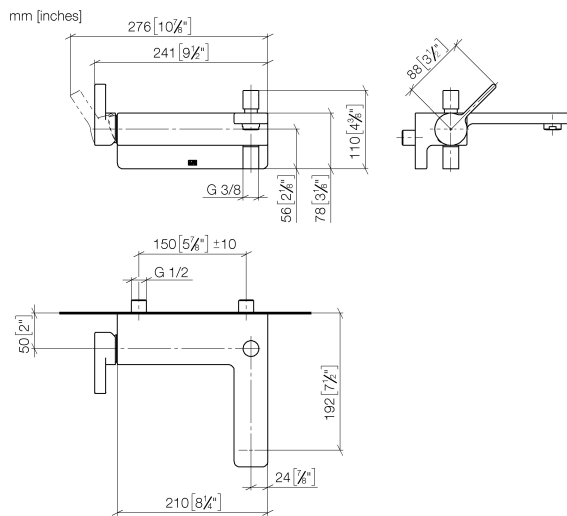
Intrinsic protection against back flow.

| | | |
|---|------------------|---------------|
|  | Chrome | 33 200 710-00 |
|  | Brushed Platinum | 33 200 710-06 |

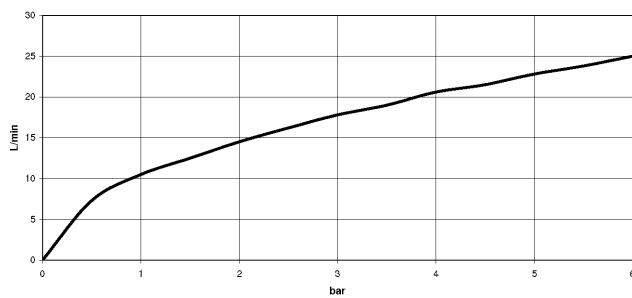
LULU Single-lever bath mixer for wall mounting without shower set - Chrome

LULU

33 200 710 Product version from 3/31/2009 to 3/19/2019



Flow rate chart



Codes & Standards

DIN 4109

EN 1717

ISO 3822

Ü-Zeichen



LULU Single-lever bath mixer for wall mounting without shower set - Chrome

LULU

33 200 710 Product version from 3/31/2009 to 3/19/2019

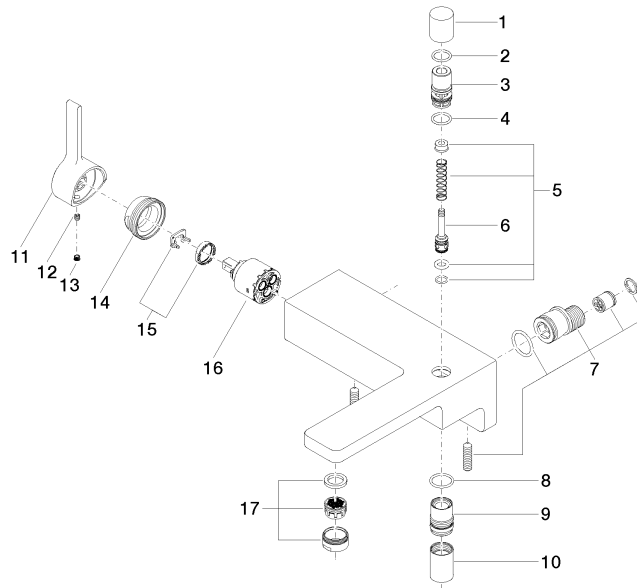
Certificates and sustainability

LGA_9

Belgaqua_21-376-2

33 200 710 Product version from 3/31/2009 to 3/19/2019

Parts for other
finishes can be found
here: Brushed
Platinum



Spare parts list

| No. | Item Number | Name | Quantity used | Delivery time |
|-----|-----------------------|-------------|---------------|---------------|
| | 14 09 24 04 141-00 | nut | 1.00 | 10 |
| | 11 09 20 71 001-00 | handle | 1.00 | 10 |
| | 5 90 16 02 023 00 90 | spring | 1.00 | 2 |
| | 1 09 20 71 031-00 | handle | 1.00 | 10 |
| | 7 90 11 04 042 00 90 | connection | 2.00 | 2 |
| | 16 90 15 05 064 00 90 | cartridge | 1.00 | 2 |
| | 6 09 31 09 094 20-00 | pull-rod | 1.00 | 10 |
| | 8 09 14 10 122 90 | seal | 1.00 | 2 |
| | 3 09 21 34 080-00 | nipple | 1.00 | 10 |
| | 17 90 23 01 118 00-00 | aerator | 1.00 | 10 |
| | 9 09 24 03 129-00 | nipple | 1.00 | 10 |
| | 10 90 21 02 069 00-00 | cover | 1.00 | 10 |
| | 4 90 14 10 055 00 90 | seal | 1.00 | 2 |
| | 13 90 31 20 109 00 90 | plug | 1.00 | 2 |
| | 2 90 14 10 033 00 90 | seal | 1.00 | 2 |
| | 12 90 31 11 030 00 90 | pin | 1.00 | 2 |
| | 15 90 28 10 148 00 90 | accessories | 1.00 | 2 |