

META Single-lever shower mixer for wall mounting - Matte Black

META

33 300 660
Product version from 7/1/2023



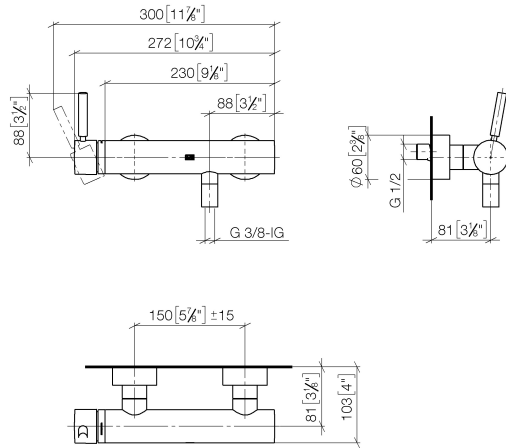
- 3/8" shower outlet
 - slide-on rosettes Ø 60 mm
 - 1/2" connection
 - gauge 150 mm - 15 mm
 - WRAS

Intrinsic protection against back flow.

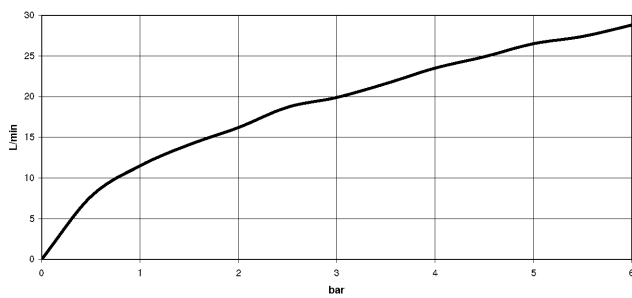
	Matte Black	33 300 660-33
	Chrome	33 300 660-00
	Brushed Platinum	33 300 660-06
	Dark Chrome	33 300 660-19
	Light Gold	33 300 660-26
	Brushed Light Gold	33 300 660-27
	Brushed Dark Brass	33 300 660-39
	Brushed Bronze	33 300 660-42
	Brushed Champagne (22kt Gold)	33 300 660-46
	Champagne (22kt Gold)	33 300 660-47
	Brushed Chrome	33 300 660-93
	Brushed Dark Platinum	33 300 660-99

33 300 660 Product version from 7/1/2023

mm [inches]



Flow rate chart



Codes & Standards

DIN 4109	EN 1717	EN 817	ISO 3822
----------	---------	--------	----------

Scottish Water Byelaws	UK Water Supply Regulations	Ü-Zeichen
---------------------------	--------------------------------	-----------



META Single-lever shower mixer for wall mounting - Matte Black

META

33 300 660 Product version from 7/1/2023

Certificates and sustainability

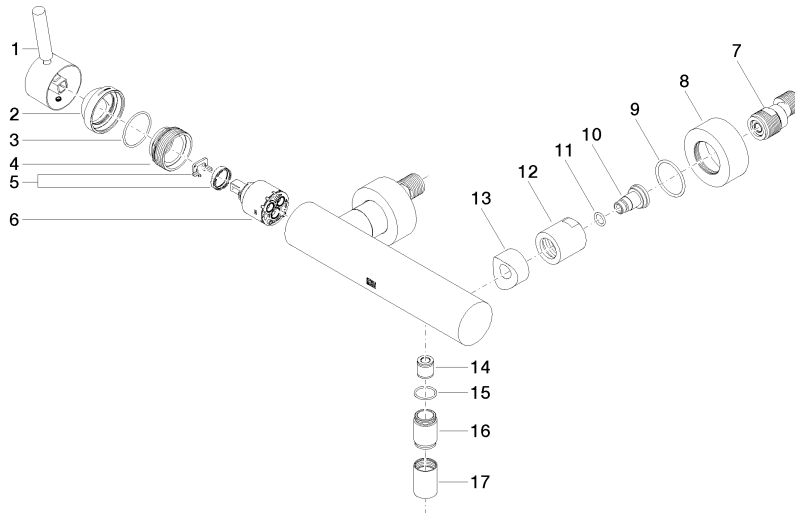
LGA_29	Belgaqua_21-025-2	DVGW_DW-6506DN0	WRAS_2205
--------	-------------------	-----------------	-----------

META Single-lever shower mixer for wall mounting - Matte Black

META

33 300 660 Product version from 7/1/2023

Parts for other
finishes can be found
here: [Chrome](#)



Spare parts list

No.	Item Number	Name	Quantity used	Delivery time
8	09 27 62 004-33	rosette	2.00	30
2	09 28 30 032-33	cover	1.00	30
1	90 20 66 007 00-33	handle	1.00	30
13	09 18 40 059-33	sleeve	2.00	30
4	09 24 04 296 90	nut	1.00	2
11	09 14 10 008 90	seal	2.00	2
12	09 23 10 048-33	nut	2.00	30
16	09 24 03 115 20-33	nipple	1.00	30
9	09 14 10 119 90	seal	2.00	2
3	09 14 10 102 90	seal	1.00	2
6	90 15 05 064 00 90	cartridge	1.00	2
7	04 11 04 030 00 90	connection	2.00	2
10	09 29 05 005 20 90	nipple	2.00	60
17	90 21 02 069 00-33	cover	1.00	30
15	90 14 10 032 00 90	seal	1.00	2
5	90 28 10 148 00 90	accessories	1.00	2
14	90 23 01 141 00 90	back-flow preventer	1.00	2