

## LULU Single-lever basin mixer with pop-up waste - Chrome

LULU

33 500 710 Product version from 3/31/2009 to 5/15/2020



- 155mm projection
- fixed spout
- circular, air-enriched flow
- height of mixer 113 mm
- height up to aerator 90 mm
- hole diameter 35 mm
- 2x screw-in M 8 x 1 pressure hose, leak-tested
- max. flow 7 l/min
- lead-free
- WRAS
- This product can help a building meet the requirements of Green Building Rating Systems, e.g. LEED®, BREEAM®, DGNB

Only suitable for basins with an overflow.



Chrome

33 500 710-00

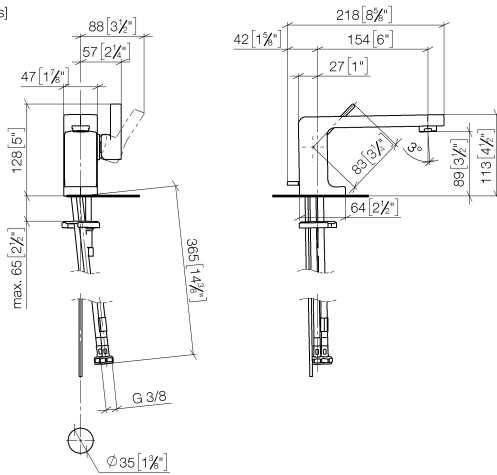


Brushed Platinum

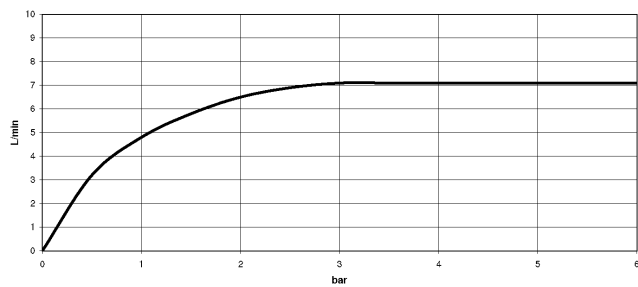
33 500 710-06

33 500 710 Product version from 3/31/2009 to 5/15/2020

mm [inches]



**Flow rate chart**



**Codes & Standards**

DIN 4109

EN 817

Executive Order  
no. 1007

ISO 3822

Scottish Water  
Byelaws

UK Water Supply  
Regulations

Ü-Zeichen

VA-Zeichen



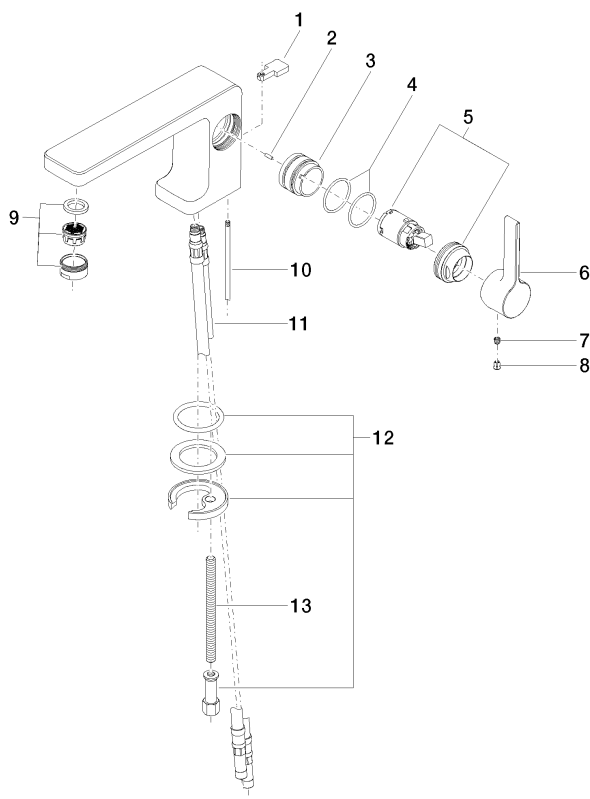
LULU Single-lever basin mixer with pop-up waste - Chrome

LULU

33 500 710    Product version from 3/31/2009 to 5/15/2020

Certificates and sustainability

LGA_9	WRAS_2001	ETA_18	GDV_0400
-------	-----------	--------	----------



14 Ablaufgarnitur 04.11.01.001.00-0

## Spare parts list

No.	Item Number	Name	Quantity used	Delivery time
5	90 15 05 041 00-00	cartridge	1.00	2
6	09 20 71 040-00	handle	1.00	10
3	09 18 40 095 10 90	sleeve	1.00	2
4	09 14 10 137 90	seal	2.00	2
10	09 31 09 080-00	pull-rod	1.00	10
13	09 31 11 012 90	pin	1.00	2
11	04 30 04 018 00 90	hose	2.00	60
2	09 31 11 111 90	pin	1.00	2
12	04 30 11 038 75 90	fixing set	1.00	2
1	09 20 71 030-00	handle	1.00	10
9	90 23 01 118 01-00	aerator	1.00	10
8	09 31 20 017 90	plug	1.00	2
7	90 31 11 030 00 90	pin	1.00	2
14	90 11 01 001 00-00	pop-up waste	1.00	10