

META Single-lever bidet mixer with pop-up waste - Brushed Champagne (22kt Gold)

META

33 600 660 Product version from 1/23/2020 to 4/1/2025



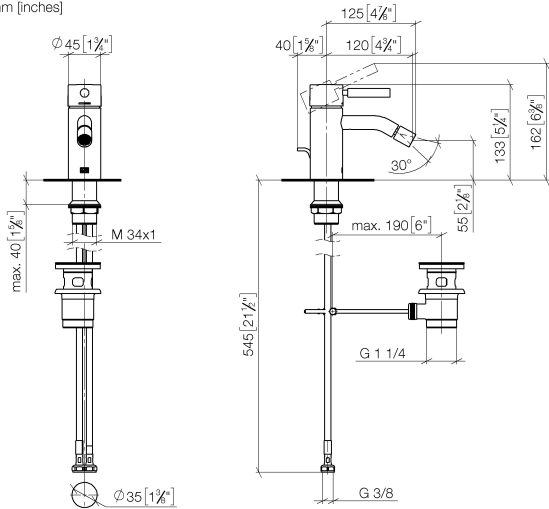
- 125mm projection
- ball-joint pivotable through 15° (in any direction)
- circular, air-enriched flow
- height of mixer 133 mm
- height up to aerator 55 mm
- hole diameter 35 mm
- 2x screw-in M 8 x 1 pressure hose, leak-tested
- max. flow 5.7 l/min
- WRAS

| | | |
|---|-------------------------------|---------------|
|  | Brushed Champagne (22kt Gold) | 33 600 660-46 |
|  | Chrome | 33 600 660-00 |
|  | Brushed Platinum | 33 600 660-06 |
|  | Dark Chrome | 33 600 660-19 |
|  | Light Gold | 33 600 660-26 |
|  | Brushed Light Gold | 33 600 660-27 |
|  | Matte Black | 33 600 660-33 |
|  | Brushed Dark Brass | 33 600 660-39 |
|  | Brushed Bronze | 33 600 660-42 |
|  | Champagne (22kt Gold) | 33 600 660-47 |
|  | Brushed Chrome | 33 600 660-93 |
|  | Brushed Dark Platinum | 33 600 660-99 |

META Single-lever bidet mixer with pop-up waste - Brushed Champagne (22kt Gold)

META

33 600 660 Product version from 1/23/2020 to 4/1/2025
mm [inches]



Flow rate chart



Codes & Standards

ASME A112.18.1 cUPC



META Single-lever bidet mixer with pop-up waste - Brushed Champagne (22kt Gold)

META

33 600 660 Product version from 1/23/2020 to 4/1/2025

Certificates and sustainability

IAPMO_4976 (

META Single-lever bidet mixer with pop-up waste - Brushed Champagne (22kt Gold)

META

33 600 660 Product version from 1/23/2020 to 4/1/2025

Parts for other
finishes can be found
here: [Chrome](#)



Spare parts list

| No. | Item Number | Name | Quantity used | Delivery time |
|-----|-----------------------|--------------|---------------|---------------|
| | 5 90 15 05 044 00 90 | cartridge | 1.00 | 2 |
| | 9 04 30 04 101 00 90 | hose | 2.00 | 2 |
| | 3 09 14 10 091 90 | seal | 1.00 | 2 |
| | 6 09 31 09 110-46 | pull-rod | 1.00 | 60 |
| | 10 90 11 01 001 00-46 | pop-up waste | 1.00 | 30 |
| | 7 90 11 06 209 00-46 | spout | 1.00 | 30 |
| | 1 90 20 66 002 00-46 | handle | 1.00 | 30 |
| | 2 09 28 30 041-46 | cover | 1.00 | 30 |
| | 4 09 24 04 266 90 | nut | 1.00 | 2 |
| | 8 04 23 10 044 07 90 | fixing set | 1.00 | 2 |