

ENO Single-lever mixer Pull-out with spray function - Champagne (22kt Gold)

ENO

33 875 760



- 225mm projection
 - pivotable spout 130°
 - air-enriched flow and spray flow
 - height of mixer 254 mm
 - height up to aerator 179 mm
 - hole diameter 35 mm
 - 1600mm metal shower hose
 - max. flow 9.6 l/min at 3 bar flow pressure
 - lead-free
 - This product can help a building meet the requirements of Green Building Rating Systems, e.g. LEED®, BREEAM®, DGNB
- Intrinsic protection against back flow.

	Champagne (22kt Gold)	33 875 760-47
	Chrome	33 875 760-00
	Brushed Platinum	33 875 760-06
	Platinum	33 875 760-08
	Dark Chrome	33 875 760-19
	Brushed Durabronze (23kt Gold)	33 875 760-28
	Brushed Champagne (22kt Gold)	33 875 760-46
	Brushed Chrome	33 875 760-93
	Brushed Dark Platinum	33 875 760-99

Recommended miscellaneous



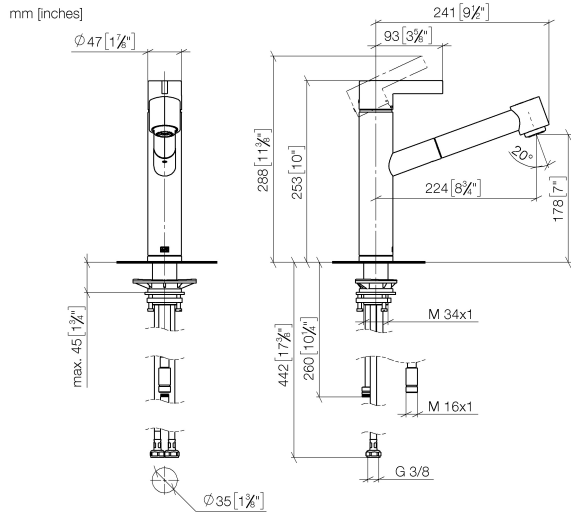
Dispenser without rosette - Champagne (22kt Gold) 82 424 970-47

Recommended miscellaneous

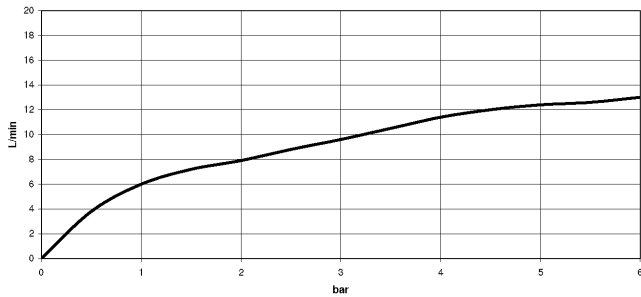


Strainer waste with control handle - Champagne (22kt Gold) 10 712 970-47

33 875 760



Flow rate chart



Codes & Standards

Executive Order
no. 1007



ENO Single-lever mixer Pull-out with spray function - Champagne (22kt Gold)

ENO

33 875 760

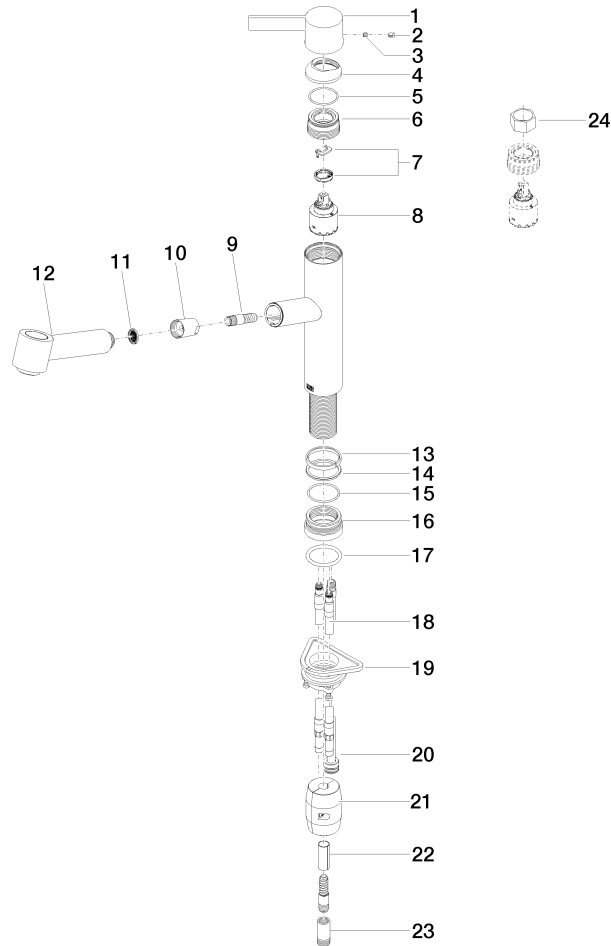
Certificates

GDV_0400

33 875 760

Product version from 5/7/2021

Parts for other
finishes can be found
here: [Chrome](#)





ENO Single-lever mixer Pull-out with spray function - Champagne (22kt Gold)

ENO

33 875 760

Spare parts list

Product version from 5/7/2021