

33 960 110



- 230mm projection
- pivotable spout 120°
- air-enriched flow and spray flow
- fabric braided hose 1500 mm
- max. flow 7 l/min at 3 bar flow pressure

Intrinsic protection against back flow.

33 960 110



Flow rate chart



Codes & Standards

DIN 4109

EN 1717

EN 817

ISO 3822

Ü-Zeichen

XP P 41-280



DORNBRACHT LYV Single-lever mixer Pull-out with spray function - Chrome

DORNBRACHT
LYV

33 960 110

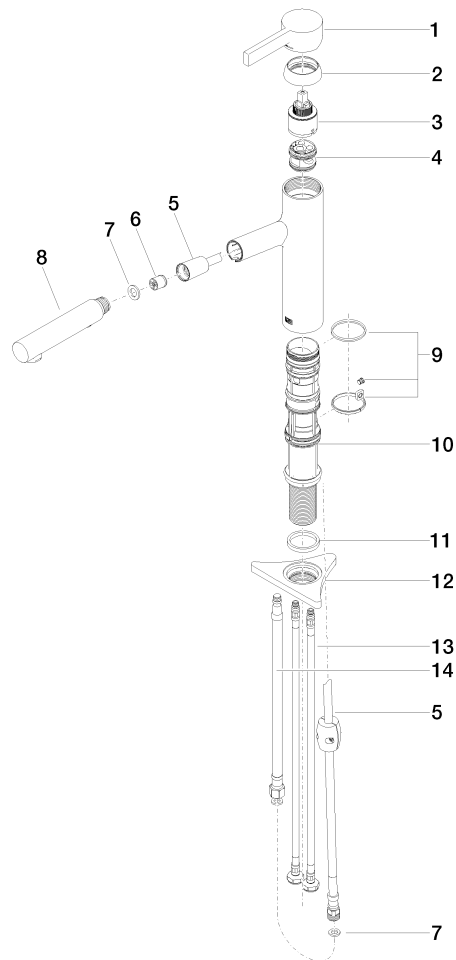
Certificates and sustainability

Belgaqua_23-012-2 AbP_10

ACS_23 ACC NY

DVGW_DW-
6506DN0

33 960 110



Spare parts list

| No. | Item Number | Name | Quantity used | Delivery time |
|-----|--------------------|--------------|---------------|---------------|
| 2 | 90 28 30 010 00-00 | cover | 1.00 | 2 |
| 4 | 90 18 40 227 00 90 | insert | 1.00 | 2 |
| 6 | 90 23 01 051 00 90 | flow reducer | 1.00 | 2 |
| 1 | 90 20 81 001 00-00 | handle | 1.00 | 2 |
| 8 | 90 12 11 181 00-00 | shower | 1.00 | 2 |
| 12 | 90 23 10 003 00 90 | fixing set | 1.00 | 2 |
| 9 | 90 14 15 062 00 90 | gasket kit | 1.00 | 2 |
| 13 | 04 30 04 100 00 90 | hose | 2.00 | 2 |
| 14 | 90 30 04 110 00 90 | hose | 1.00 | 2 |
| 5 | 90 30 02 101 00 90 | hose | 1.00 | 2 |
| 10 | 90 30 01 211 00 90 | shaft | 1.00 | 2 |
| 3 | 90 15 05 067 00 90 | cartridge | 1.00 | 2 |
| 7 | 90 14 05 081 00 90 | seal | 1.00 | 2 |
| 11 | 90 14 05 080 00 90 | seal | 1.00 | 2 |