

## META Bath thermostat for wall mounting without shower set - Chrome

META

34 201 979



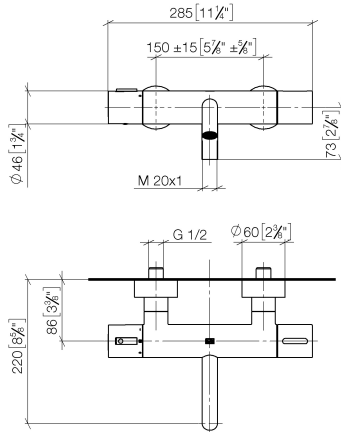
- 210mm projection
- circular normal flow
- rotary diverter with volume control and shut-off function
- 3/8" shower outlet
- slide-on rosettes Ø 60 mm
- 1/2" connection
- gauge 150 mm - 15 mm
- max. flow 16.9 l/min at 3 bar flow pressure
- WRAS

Intrinsic protection against back flow.

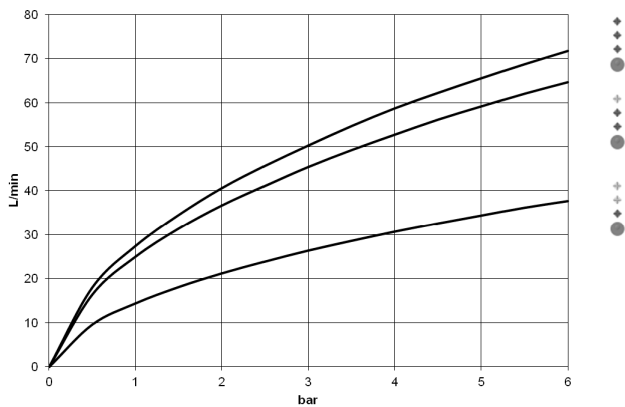
|   |                               |               |
|---|-------------------------------|---------------|
|    | Chrome                        | 34 201 979-00 |
|    | Brushed Platinum              | 34 201 979-06 |
|    | Dark Chrome                   | 34 201 979-19 |
|    | Light Gold                    | 34 201 979-26 |
|    | Brushed Light Gold            | 34 201 979-27 |
|    | Matte Black                   | 34 201 979-33 |
|    | Brushed Dark Brass            | 34 201 979-39 |
|    | Brushed Bronze                | 34 201 979-42 |
|    | Brushed Champagne (22kt Gold) | 34 201 979-46 |
|   | Champagne (22kt Gold)         | 34 201 979-47 |
|  | Brushed Chrome                | 34 201 979-93 |
|  | Brushed Dark Platinum         | 34 201 979-99 |

34 201 979

mm [inches]



### Flow rate chart



### Codes & Standards

DIN 4109

EN 1717

ISO 3822

Scottish Water  
Byelaws

UK Water Supply  
Regulations

Ü-Zeichen



META Bath thermostat for wall mounting without shower set - Chrome

META

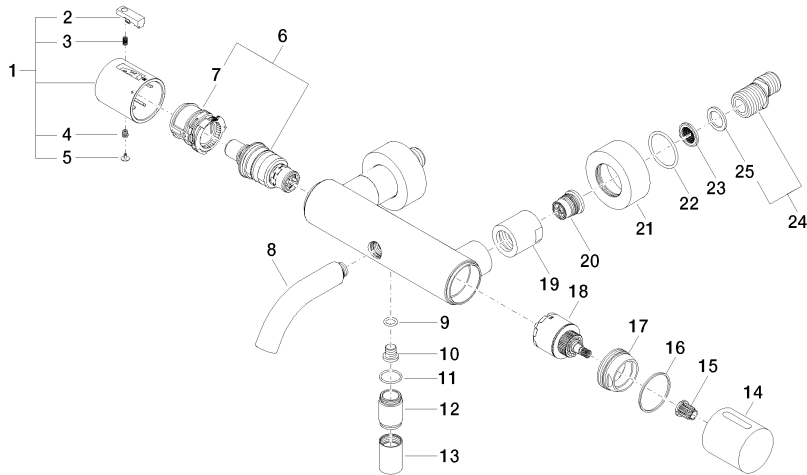
34 201 979

Certificates and sustainability

|        |           |                   |
|--------|-----------|-------------------|
| LGA_18 | WRAS_2201 | Belgaqua_21-032-2 |
|--------|-----------|-------------------|

34 201 979

Parts for other  
finishes can be found  
here: Brushed  
Platinum





## META Bath thermostat for wall mounting without shower set - Chrome

META

34 201 979

### Spare parts list

| No. | Item Number        | Name       | Quantity used | Delivery time |
|-----|--------------------|------------|---------------|---------------|
| 3   | 90 16 02 027 00 90 | spring     | 1.00          | 2             |
| 24  | 04 11 04 032 00 90 | connection | 2.00          | 2             |
| 10  | 08 30 30 701 90    | screw      | 1.00          | 2             |
| 7   | 90 30 40 010 00 90 | regulator  | 1.00          | 2             |
| 8   | 90 11 06 214 00-00 | spout      | 1.00          | 10            |
| 20  | 90 29 05 024 00 90 | nipple     | 2.00          | 2             |
| 9   | 09 14 10 139 90    | seal       | 1.00          | 2             |
| 16  | 09 14 15 052 90    | ring       | 1.00          | 2             |
| 6   | 90 15 02 070 00 90 | cartridge  | 1.00          | 2             |
| 22  | 09 14 10 119 90    | seal       | 2.00          | 2             |
| 19  | 09 23 10 048-00    | nut        | 2.00          | 10            |
| 14  | 09 20 97 020-00    | handle     | 1.00          | 10            |
| 17  | 09 24 04 141-00    | nut        | 1.00          | 10            |
| 25  | 09 14 20 010 90    | seal       | 2.00          | 2             |
| 23  | 09 29 03 020 90    | insert     | 2.00          | 2             |
| 21  | 09 27 62 004-00    | rosette    | 2.00          | 10            |
| 18  | 90 15 05 033 00 90 | diverter   | 1.00          | 2             |
| 1   | 90 17 33 004 00-00 | handle     | 1.00          | 10            |
| 12  | 09 24 03 115 20-00 | nipple     | 1.00          | 10            |
| 15  | 90 12 12 002 00 90 | fixing cap | 1.00          | 2             |
| 13  | 90 21 02 069 00-00 | cover      | 1.00          | 10            |
| 11  | 90 14 10 032 00 90 | seal       | 1.00          | 2             |
| 4   | 90 30 30 136 00 90 | screw      | 1.00          | 2             |
| 5   | 90 31 20 049 00-00 | plug       | 1.00          | 10            |
| 2   | 90 21 33 011 00-13 | handle     | 1.00          | 2             |