


## Showerpipe with shower thermostat without hand shower - Brushed Dark Brass SERIES SPECIFIC

34 460 979 Product version from 4/1/2024



- shower with fixed riser projection 453mm
- overhead shower: rain flow
- rain shower Ø 300 mm
- rain shower with anti-scale system
- max. rainshower flow 14 l/min
- Function from: 10 l/min
- rotary diverter with volume control and shut-off function
- slide-on rosettes Ø 70 mm
- height of fittings up to rain shower (bottom edge) 1009mm
- height of fittings up to top edge of elbow 1150mm
- gauge 150 mm - 13 mm
- metal shower hose 1750mm with integrated anti-twist protection
- 1/2" connection
- slide bar
- Pipe diameter 23.5 mm
- quick clearing
- WRAS

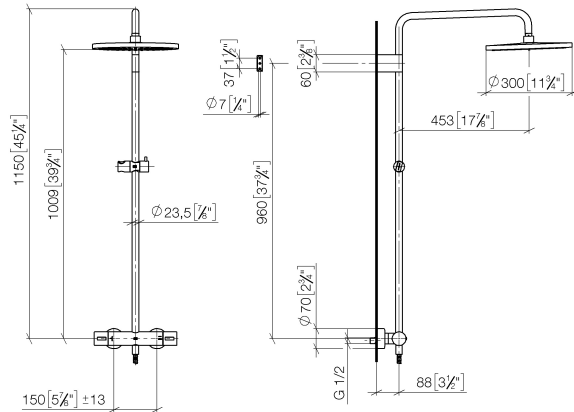
This article does not include a hand shower!  
Intrinsic protection against back flow.

|   |                               |               |
|---|-------------------------------|---------------|
|    | Brushed Dark Brass            | 34 460 979-39 |
|    | Chrome                        | 34 460 979-00 |
|    | Brushed Platinum              | 34 460 979-06 |
|    | Platinum                      | 34 460 979-08 |
|    | Dark Chrome                   | 34 460 979-19 |
|    | Light Gold                    | 34 460 979-26 |
|    | Brushed Light Gold            | 34 460 979-27 |
|    | Brushed Durabrass (23kt Gold) | 34 460 979-28 |
|    | Matte Black                   | 34 460 979-33 |
|   | Brushed Bronze                | 34 460 979-42 |
|  | Brushed Champagne (22kt Gold) | 34 460 979-46 |
|  | Champagne (22kt Gold)         | 34 460 979-47 |
|  | Brushed Chrome                | 34 460 979-93 |
|  | Brushed Dark Platinum         | 34 460 979-99 |

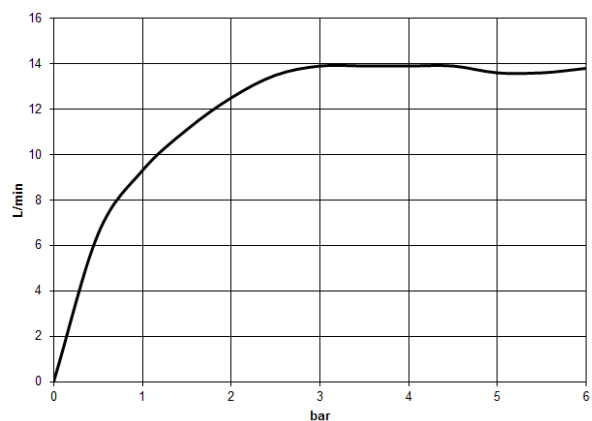
## Showerpipe with shower thermostat without hand shower - Brushed Dark Brass SERIES SPECIFIC

34 460 979 Product version from 4/1/2024

mm [inches]  
1:10



### Flow rate chart



### Codes & Standards

DIN 4109

ISO 3822

Scottish Water  
Byelaws

UK Water Supply  
Regulations

Ü-Zeichen



## Showerpipe with shower thermostat without hand shower - Brushed Dark Brass SERIES SPECIFIC

---

34 460 979 Product version from 4/1/2024

### Certificates and sustainability

---

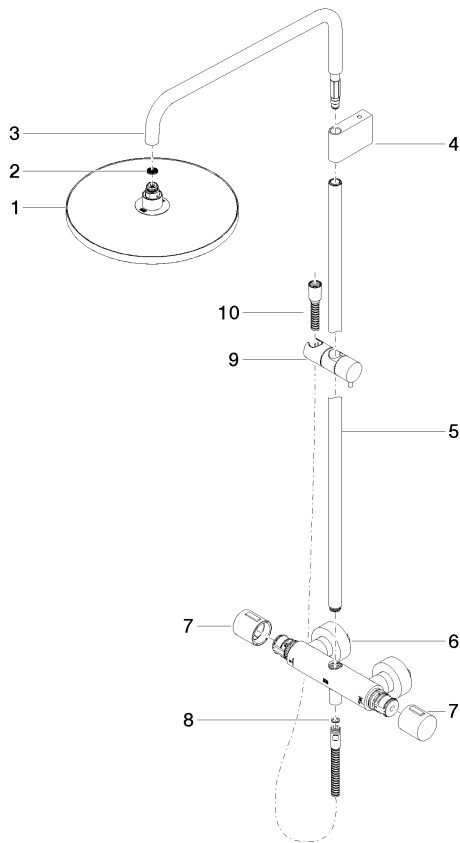
WRAS\_2204

LGA\_38

## Showerpipe with shower thermostat without hand shower - Brushed Dark Brass SERIES SPECIFIC

34 460 979 Product version from 4/1/2024

Parts for other  
finishes can be found  
here: [Chrome](#)



### Spare parts list

| No.  | Item Number        | Name   | Quantity used | Delivery time |
|--|--------------------|--|---------------|---------------|
| 1  | 04 12 05 091 00-39 | shower   | 1.00          | -             |
| Spare part can no longer be ordered, please order the replacement item |                    |  |               |               |
| 10   | 28 322 970-39      | Metal shower hose 1/2" x 3/8" x 1750 mm - Brushed Dark Brass | 1.00          | 30            |
| 9  | 12 570 970-39      | Slide unit - Brushed Dark Brass                              | 1.00          | 60            |
| 8  | 90 14 20 026 00 90 | seal   | 1.00          | 2             |
| 3  | 90 28 22 348 00-39 | pipe   | 1.00          | 30            |
| 7  | 90 17 33 015 00-39 | handle   | 2.00          | 30            |
| 2  | 09 23 01 039 90    | sieve  | 1.00          | 2             |
| 4  | 90 17 11 150 00-39 | holder   | 1.00          | 30            |
| 5  | 90 28 22 349 00-39 | pipe   | 1.00          | 30            |
| 6  | 04 17 01 250 00-39 | connection   | 1.00          | 60            |