

Concealed ceiling installation box for surface-mounted ceiling installation with light -

35 042 970 90 Product version from 4/1/2022



- concealed rough parts
- 2x female thread 1/2" connections

Separate LED power supply

Input LED power supply

- Input 100-240V AC 50-60Hz

Output LED power supply

- 350mA (CC)

Output specification LED power supply

- SELV (Safety Extra Low Voltage)
- Class 2

Ceiling module power supply

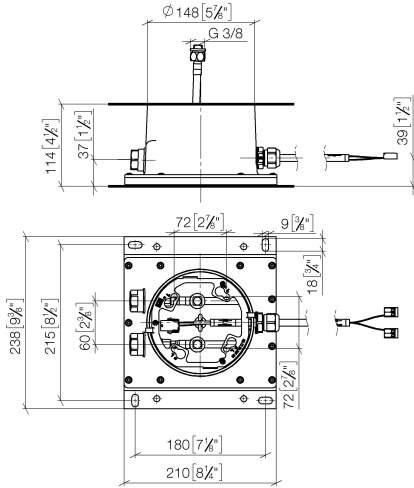
- 350mA (CC)
- Supply pipe 7 m
- Provided by customer: Light switch

Environment

- Not suitable for outdoor use.
- Not suitable for use in a steam room.
- Not suitable for use in chlorinated or salty environments.
- Comply with the protection zone regulations as defined in DIN VDE 0100, Part 701 (IEC 60364-7-701).
- WRAS

Concealed ceiling installation box for surface-mounted ceiling installation with light -

35 042 970 90 Product version from 4/1/2022
mm [inches]



Codes & Standards

Scottish Water Byelaws	UK Water Supply Regulations
---------------------------	--------------------------------

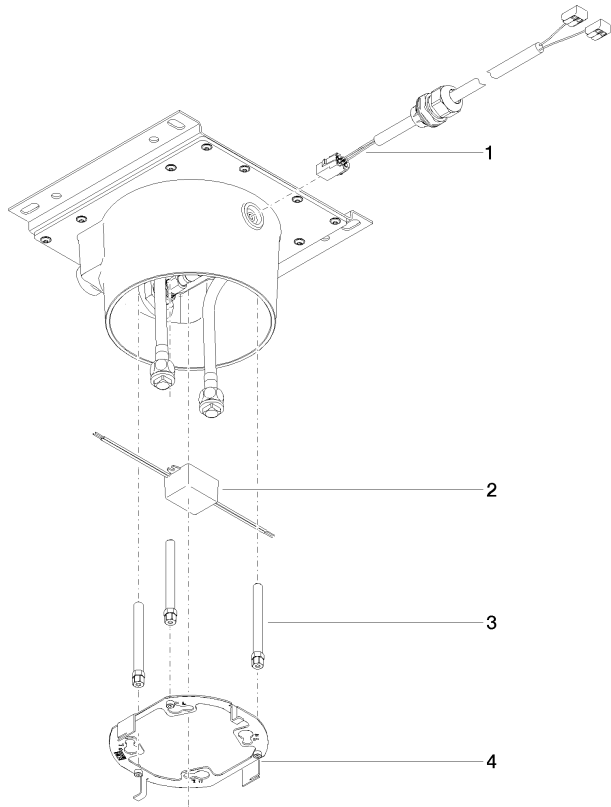
Certificates

WRAS_240502

Concealed ceiling installation box for surface-mounted ceiling installation with light -

35 042 970 90

Product version from 4/1/2022



Spare parts list

No.	Item Number	Name	Quantity used	Delivery time
1	90 10 01 227 00 90	electronic accessories	1	2
2	90 10 01 257 00 90	electronic accessories	1	2
3	90 30 30 208 00 90	screw	1	2
4	90 17 20 239 00 90	flange	1	2