



Concealed wall installation box -

35 206 970 90



- female thread 1/2" connection
- dust cover
- anti-water packing
- WRAS 2106011

Recommended miscellaneous



**xGRID Attachment set for
integrating in the dry wall
construction -**

12 340 970 90

Required miscellaneous

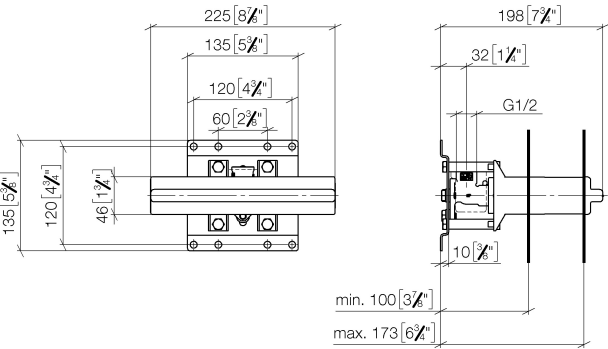


xGRID Installation track 555 mm - 12 360 970 90

Concealed wall installation box -

35 206 970 90

mm [inches]



Codes & Standards

DIN 4109	ISO 3822	Scottish Water Byelaws	UK Water Supply Regulations
----------	----------	---------------------------	--------------------------------

Ü-Zeichen

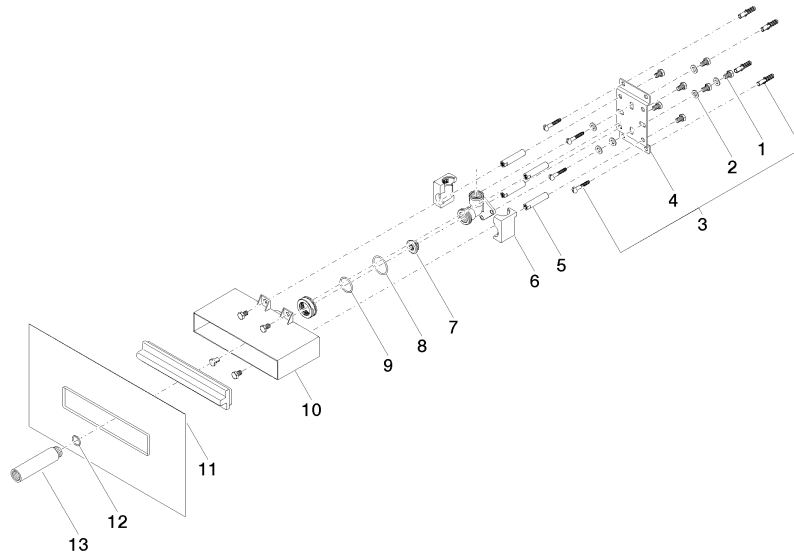
Certificates

LGA_19	WRAS_2106
--------	-----------

Concealed wall installation box -

35 206 970 90

Product version from 3/7/2023





Concealed wall installation box -

35 206 970 90

Spare parts list

Product version from 3/7/2023

No.	Item Number	Name	Quantity used	Delivery time
	09 30 30 152 90	screw	28	2