

eSET Touchfree Basin mixer with temperature setting for combining with free-standing fittings -

35 740 970 90



- lead-free
- 2x back flow preventer
- 2x male thread 1/2" connection
- outlet with high-pressure hose
- surface-mounted installation
- WRAS 1906116

Can be combined with spouts from the Vaia, Lissé, CL.1, IMO, Tara., Tara Logic, Meta.02, Deque, Supernova, Symetrics, LULU and MEM series

Cannot be combined with spouts with a pull-rod pop-up waste.

Please combine with item no. 10 126 970-FF

Not suitable for combination with steel basins.

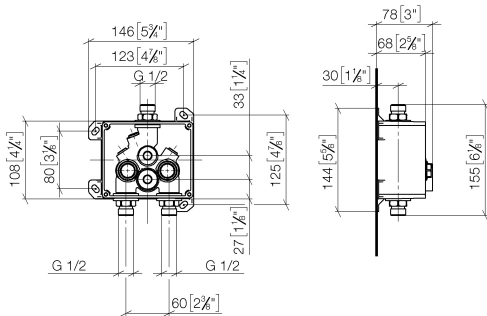
Other series and finishes on request (x-TRA SERVICE)

ATTENTION: Separate terms and conditions for electronic articles are applicable.



eSET Touchfree Basin mixer with temperature setting for combining with free-standing fittings -

35 740 970 90
mm [inches]



Codes & Standards

DIN 4109	EN 1717	ISO 3822	Scottish Water Byelaws
UK Water Supply Regulations	Ü-Zeichen		

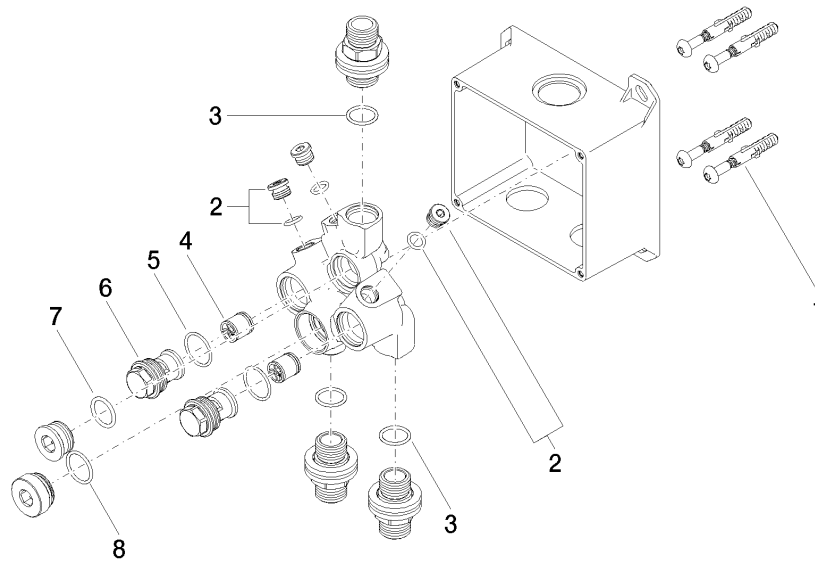
Certificates

WRAS_1906	LGA_29	Belgaqua_23-210-2
-----------	--------	-------------------

eSET Touchfree Basin mixer with temperature setting for combining with free-standing fittings -

35 740 970 90

Product version from 7/3/2017





eSET Touchfree Basin mixer with temperature setting for combining with free-standing fittings -

35 740 970 90

Spare parts list

Product version from 7/3/2017

No.	Item Number	Name	Quantity used	Delivery time
	04 30 31 024 01 90	fixing set	16	2