

SERENITY SKY Concealed ceiling installation box with light -

35 771 970 90 Product version from 9/1/2024



- concealed rough parts
- flush-mounted reflection box, 662 x 482 mm, RAL 9003, Signal White
- 2x female thread 1/2" connections
- min. recess depth 150 mm
- max. recess depth 590 mm
- weight 15kg

Separate LED power supply

Input LED power supply

- Electricity supply: 100-240 V AC, 50-60 Hz, 20 W

Output LED power supply

- 24V DC (CV)

Output specification LED power supply

- SELV (Safety Extra Low Voltage)
- Class 2

Ceiling module power supply

- 24V DC (CV)
- Supply pipe 7 m

Activation

- ZigBee Light Link RGBW controller
- Provided by customer: Zigbee gateway

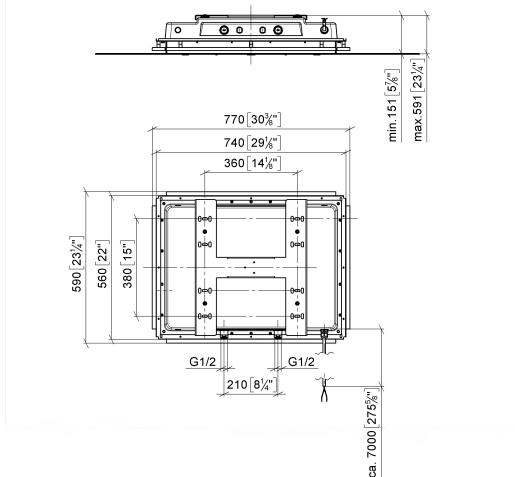
Environment

- Not suitable for outdoor use.
- Not suitable for use in a steam room.
- Not suitable for use in chlorinated or salty environments.
- Comply with the protection zone regulations as defined in DIN VDE 0100, Part 701 (IEC 60364-7-701).
- Dornbracht recommends consulting a systems integrator.

SERENITY SKY Concealed ceiling installation box with light -

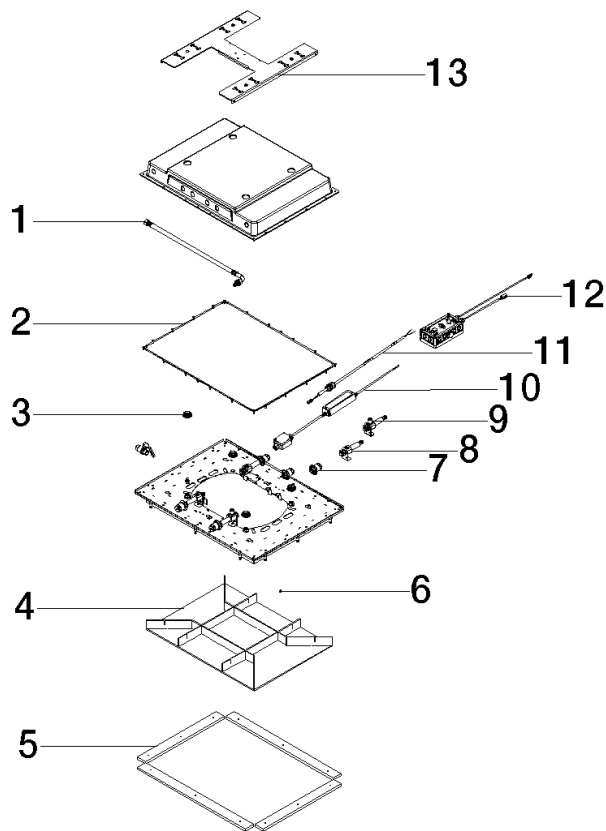
35 771 970 90 Product version from 9/1/2024

mm [inches]



SERENITY SKY Concealed ceiling installation box with light -

35 771 970 90 Product version from 9/1/2024



Spare parts list

No.	Item Number	Name	Quantity used	Delivery time
1	90 30 04 099 00 90	hose	1	2
2	90 14 03 194 00 90	seal	1	2
3	91 31 20 530 00 90	nipple set	1	2
4	90 91 42 195 01 90	lid	1	2
5	90 18 30 020 00 90	sleeve	1	2
6	91 30 30 194 00 90	screw	1	2
7	90 24 03 305 00 90	fixing set	1	2
8	90 17 20 308 01 90	connection	1	2
9	90 17 20 308 00 90	connection	1	2
10	90 10 01 262 00 90	electronic accessories	1	2
11	90 10 01 228 00 90	electronic accessories	1	2
12	90 10 01 264 00 90	electronic accessories	1	2
13	90 17 20 304 00 90	holder	1	-

Spare part can no longer be ordered, please order the replacement item