


Concealed wall-mounted single-lever mixer -

35 860 970 90
Product version from 11/11/2021




- 2x female thread 1/2" connections
- 1x female thread 1/2" outlet for wall spout
- 1x female thread 1/2" outlet
- 2x dust cover
- anti-water packing
- soundproofing
- gauge 100 mm
- WRAS


Recommended miscellaneous

	<b>Extension 20 mm -</b> •Not suitable for combining with META PURE (36 86X 664-FF).	12 869 970 90
---	--	---------------

Recommended miscellaneous

	<b>Extension 20 mm -</b> •Can only be combined with exposed trim parts 36 86X 664-FF.	12 870 970 90
---	---	---------------

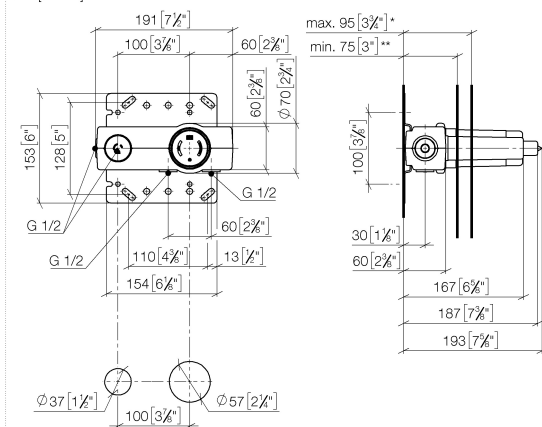
Recommended miscellaneous

	<b>Adapter for reversed water connections -</b> •Not suitable for combining with META PURE (36 86X 664-FF).	12 880 970 90
---	---	---------------

## Concealed wall-mounted single-lever mixer -

35 860 970 90 Product version from 11/11/2021

mm [inches]



	**min	*max
+ 1286997090	95 [3 3/4"]	115 [4 1/2"]
+ 1287097090	95 [3 3/4"]	115 [4 1/2"]

### Flow rate chart



### Codes & Standards

EN 817

Scottish Water  
Byelaws

UK Water Supply  
Regulations

XP P 41-280



Concealed wall-mounted single-lever mixer -

---

35 860 970 90    Product version from 11/11/2021

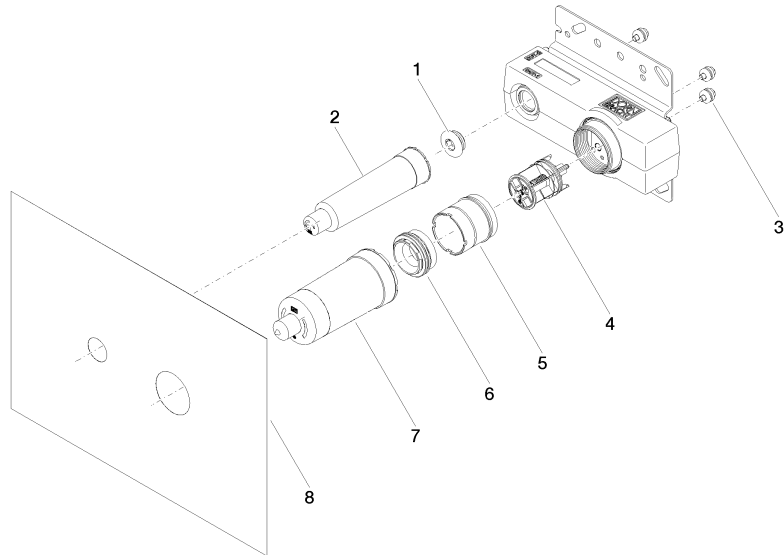
Certificates

---

WRAS_2010	ACS_21 ACC LY	DVGW_DW- 6512DN0	WRAS_2107
-----------	---------------	---------------------	-----------

**Concealed wall-mounted single-lever mixer -**

35 860 970 90    Product version from 11/11/2021



**Spare parts list**

No.	Item Number	Name	Quantity used	Delivery time
1	04 31 20 006 00 90	plug	1	2
2	09 21 02 182 90	cap	1	2
3	90 23 01 091 00 90	set	3	2
4	90 31 20 107 00 90	plug	1	2
5	90 17 01 238 00 90	sleeve	1	2
6	90 24 04 349 00 90	threaded connector	1	2
7	09 21 02 176 90	cap	1	60
8	04 14 03 074 01 90	gasket kit	1	2