

## Concealed single-lever mixer with cover plate with integrated shower connection - Brushed Durabronze (23kt Gold)

TARA

36 045 660



Fits: TARA, META

- cover plate Ø 78 mm
- WRAS 2101023

**Intrinsic protection against back flow.**

**Article cannot be extended, please check the depth of the installation location!**

Intrinsic protection against back flow.

Article cannot be extended, please check the depth of the installation location!

	Brushed Durabronze (23kt Gold)	36 045 660-28
	Chrome	36 045 660-00
	Brushed Platinum	36 045 660-06
	Platinum	36 045 660-08
	Dark Chrome	36 045 660-19
	Light Gold	36 045 660-26
	Brushed Light Gold	36 045 660-27
	Matte Black	36 045 660-33
	Brushed Bronze	36 045 660-42
	Brushed Champagne (22kt Gold)	36 045 660-46
	Champagne (22kt Gold)	36 045 660-47
	Brushed Chrome	36 045 660-93
	Brushed Dark Platinum	36 045 660-99

### Required miscellaneous



**Concealed wall mounting -**

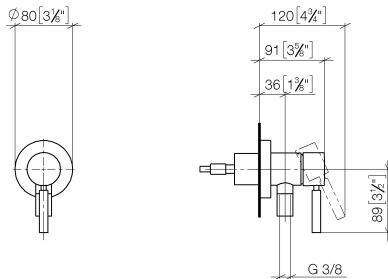
- max. recess depth 103 mm
- min. recess depth 78 mm

35 003 970 90

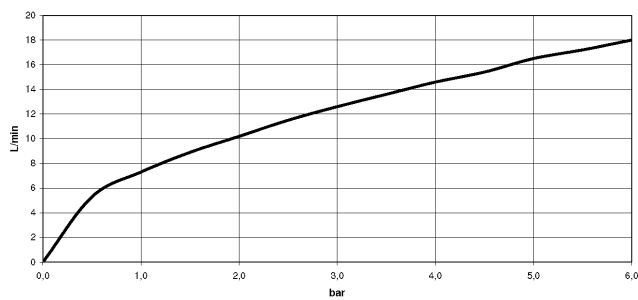
## Concealed single-lever mixer with cover plate with integrated shower connection - Brushed Durabron (23kt Gold)

TARA

36 045 660  
mm [inches]



### Flow rate chart



### Codes & Standards

DIN 4109

EN 1717

ISO 3822

Scottish Water  
Byelaws

UK Water Supply  
Regulations

Ü-Zeichen



Concealed single-lever mixer with cover plate with integrated shower  
connection - Brushed Durabron (23kt Gold)

---

TARA

36 045 660

Certificates

---

WRAS\_2101

Belgaqua\_21-025-2 LGA\_29

## Concealed single-lever mixer with cover plate with integrated shower connection - Brushed Durabross (23kt Gold)

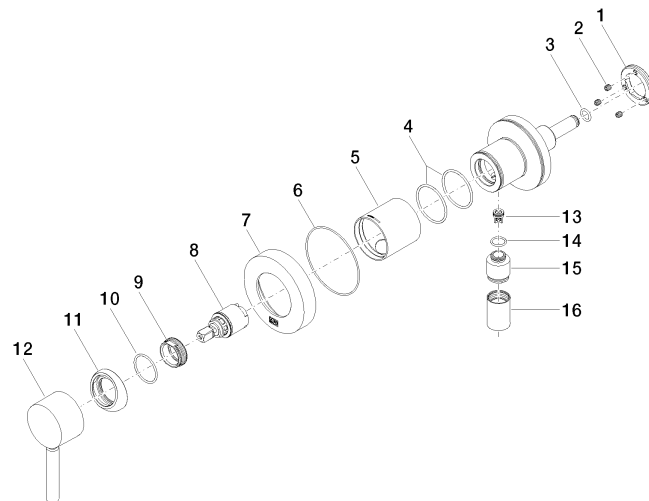
TARA

36 045 660

Product version up to 5/15/2020

Product version from 5/15/2020 to 5/15/2020

**Product version from 5/15/2020**





Concealed single-lever mixer with cover plate with integrated shower connection - Brushed Durabron (23kt Gold)

TARA

36 045 660

Spare parts list

Product version up to 5/15/2020

Product version from 5/15/2020 to 5/15/2020

Product version from 5/15/2020

No.	Item Number	Name	Quantity used	Delivery time
	09 24 77 002 90	nut	19	2