


Concealed single-lever mixer with cover plate with integrated shower connection - Matte Black

TARA

36 045 660			
	<ul style="list-style-type: none"> cover plate Ø 78 mm Intrinsic protection against back flow. Article cannot be extended, please check the depth of the installation location! Intrinsic protection against back flow. Article cannot be extended, please check the depth of the installation location!	<div> <div></div> <div>Matte Black</div> <div>36 045 660-33</div> </div> <div> <div></div> <div>Chrome</div> <div>36 045 660-00</div> </div> <div> <div></div> <div>Brushed Platinum</div> <div>36 045 660-06</div> </div> <div> <div></div> <div>Platinum</div> <div>36 045 660-08</div> </div> <div> <div></div> <div>Dark Chrome</div> <div>36 045 660-19</div> </div> <div> <div></div> <div>Light Gold</div> <div>36 045 660-26</div> </div> <div> <div></div> <div>Brushed Light Gold</div> <div>36 045 660-27</div> </div> <div> <div></div> <div>Brushed Durabrand (23kt Gold)</div> <div>36 045 660-28</div> </div> <div> <div></div> <div>Brushed Bronze</div> <div>36 045 660-42</div> </div> <div> <div></div> <div>Brushed Champagne (22kt Gold)</div> <div>36 045 660-46</div> </div> <div> <div></div> <div>Champagne (22kt Gold)</div> <div>36 045 660-47</div> </div> <div> <div></div> <div>Brushed Chrome</div> <div>36 045 660-93</div> </div> <div> <div></div> <div>Brushed Dark Platinum</div> <div>36 045 660-99</div> </div>	

Fits: TARA, META

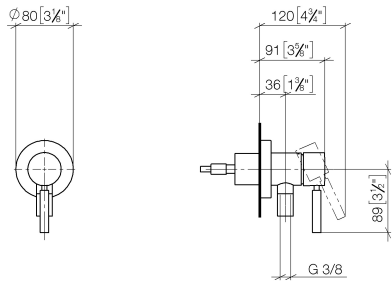
Required miscellaneous

	Concealed wall mounting - •max. recess depth 103 mm •min. recess depth 78 mm	35 003 970 90
--	---	---------------

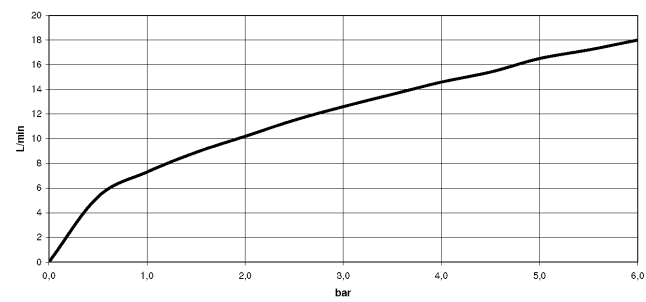
Concealed single-lever mixer with cover plate with integrated shower connection - Matte Black

TARA

36 045 660
mm [inches]



Flow rate chart



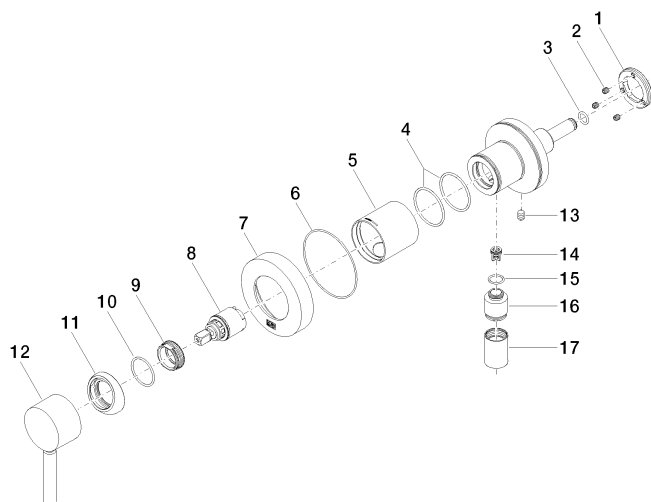
Certificates

Belgaqua_21-025- LGA_29569. WRAS_2101023.
27_1.

Concealed single-lever mixer with cover plate with integrated shower connection - Matte Black

TARA

36 045 660



Spare parts list

No.	Item Number	Name	Quantity used	Delivery time
1	09 24 77 002 90	nut	1	2
2	90 31 11 030 00 90	pin	3	2
3	09 14 10 139 90	seal	1	2
4	09 14 10 111 90	seal	2	2
5	09 18 40 215-33	sleeve	1	30
6	09 14 10 518 90	seal	1	60
7	09 27 66 000-33	rosette	1	30
8	90 15 05 044 00 90	cartridge	1	2
9	09 24 04 266 90	nut	1	2
10	09 14 10 120 90	seal	1	2
11	09 28 30 041-33	cover	1	30
12	90 20 66 006 00-33	handle	1	30
13	09 31 11 144 90	pin	1	2
14	09 23 01 131 90	back-flow preventer	1	2
15	09 14 10 213 90	seal	1	2
16	09 24 03 281-33	nipple	1	30
17	90 21 02 069 00-33	cover	1	30