

Concealed single-lever mixer with cover plate - Brushed Champagne (22kt Gold)

IMO

36 060 670



- cover plate 80 x 80 mm
- WRAS 2107016

Fits: IMO, MEM, CL.1, CYO

	Brushed Champagne (22kt Gold)	36 060 670-46
	Chrome	36 060 670-00
	Brushed Platinum	36 060 670-06
	Platinum	36 060 670-08
	Dark Chrome	36 060 670-19
	Brushed Light Gold	36 060 670-27
	Brushed Durabronze (23kt Gold)	36 060 670-28
	Matte Black	36 060 670-33
	Champagne (22kt Gold)	36 060 670-47
	Brushed Chrome	36 060 670-93
	Brushed Dark Platinum	36 060 670-99

Required miscellaneous

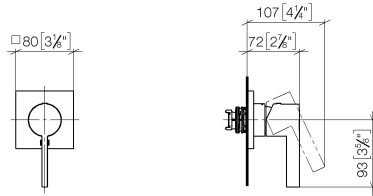


- Concealed wall-mounted single-lever mixer -** 35 860 970 90
- max. recess depth 95 mm
 - min. recess depth 80 mm

Concealed single-lever mixer with cover plate - Brushed Champagne (22kt Gold)

IMO

36 060 670
mm [inches]



Codes & Standards

DIN 4109

ISO 3822

Ü-Zeichen

Certificates

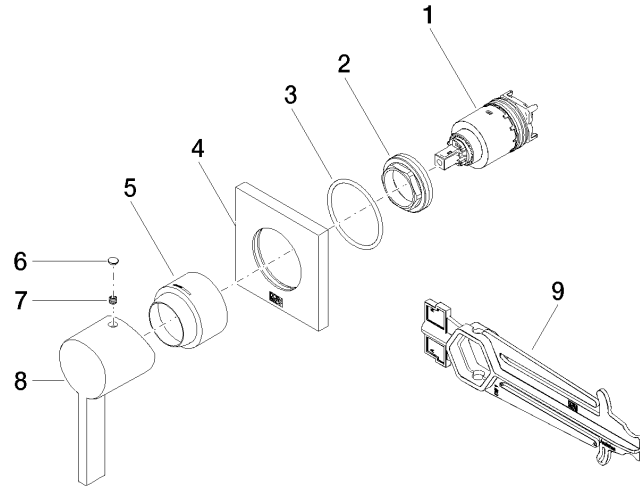
LGA_29

Concealed single-lever mixer with cover plate - Brushed Champagne (22kt Gold)

IMO

36 060 670

Product version from 6/1/2024





Concealed single-lever mixer with cover plate - Brushed Champagne (22kt Gold)

IMO

36 060 670

Spare parts list

Product version from 6/1/2024

No.	Item Number	Name	Quantity used	Delivery time
	90 15 05 064 01 90	cartridge	9	2