

## Concealed single-lever mixer with cover plate - Brushed Dark Platinum

IMO

36 060 670



- cover plate 80 x 80 mm
- WRAS 2107016

Fits: IMO, MEM, CL.1, CYO

|  |                                |               |
|--|--------------------------------|---------------|
|    | Brushed Dark Platinum          | 36 060 670-99 |
|    | Chrome                         | 36 060 670-00 |
|    | Brushed Platinum               | 36 060 670-06 |
|    | Platinum                       | 36 060 670-08 |
|    | Dark Chrome                    | 36 060 670-19 |
|    | Brushed Light Gold             | 36 060 670-27 |
|    | Brushed Durabronze (23kt Gold) | 36 060 670-28 |
|    | Matte Black                    | 36 060 670-33 |
|   | Brushed Champagne (22kt Gold)  | 36 060 670-46 |
|  | Champagne (22kt Gold)          | 36 060 670-47 |
|  | Brushed Chrome                 | 36 060 670-93 |

### Required miscellaneous



- Concealed wall-mounted single-lever mixer -** 35 860 970 90
- max. recess depth 95 mm
  - min. recess depth 80 mm

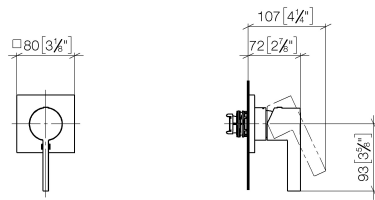


Concealed single-lever mixer with cover plate - Brushed Dark Platinum

IMO

36 060 670

mm [inches]



Codes & Standards

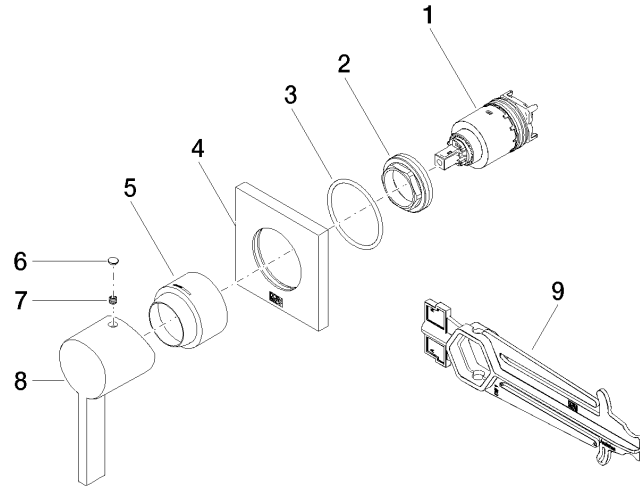
|          |          |                        |                             |
|----------|----------|------------------------|-----------------------------|
| DIN 4109 | ISO 3822 | Scottish Water Byelaws | UK Water Supply Regulations |
|----------|----------|------------------------|-----------------------------|

Ü-Zeichen

Certificates

|           |        |
|-----------|--------|
| WRAS_2107 | LGA_29 |
|-----------|--------|

**Product version from 6/1/2024**





## Concealed single-lever mixer with cover plate - Brushed Dark Platinum

IMO

36 060 670

### Spare parts list

#### Product version from 6/1/2024

| No. | Item Number        | Name      | Quantity used | Delivery time |
|-----|--------------------|-----------|---------------|---------------|
|     | 90 15 05 064 01 90 | cartridge | 9             | 2             |