

Concealed single-lever mixer with diverter - Brushed Chrome

IMO

36 120 670



- automatic diverter
- cover plate 150 x 90 mm
- WRAS 2207012

Fits: IMO, MEM, CL.1, CYO

	Brushed Chrome	36 120 670-93
	Chrome	36 120 670-00
	Brushed Platinum	36 120 670-06
	Platinum	36 120 670-08
	Dark Chrome	36 120 670-19
	Brushed Light Gold	36 120 670-27
	Brushed Durabronze (23kt Gold)	36 120 670-28
	Matte Black	36 120 670-33
	Brushed Champagne (22kt Gold)	36 120 670-46
	Champagne (22kt Gold)	36 120 670-47
	Brushed Dark Platinum	36 120 670-99

Required miscellaneous



- Concealed single-lever mixer -** 35 020 970 90
- max. recess depth 105 mm
 - min. recess depth 80 mm

Recommended miscellaneous



- xGRID Attachment set for integrating in the dry wall construction -** 12 340 970 90

Required miscellaneous



- Concealed single-lever mixer with backflow preventor -** 35 021 970 90
- max. recess depth 105 mm
 - min. recess depth 80 mm

Required miscellaneous



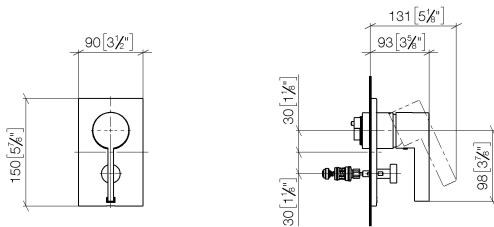
- xGRID Installation track 555 mm -** 12 360 970 90

Concealed single-lever mixer with diverter - Brushed Chrome

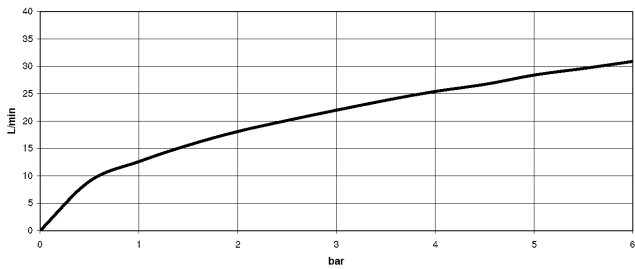
IMO

36 120 670

mm [inches]



Flow rate chart



Codes & Standards

DIN 4109

ISO 3822

Scottish Water
Byelaws

UK Water Supply
Regulations

Ü-Zeichen



Concealed single-lever mixer with diverter - Brushed Chrome

IMO

36 120 670

Certificates

WRAS_2207

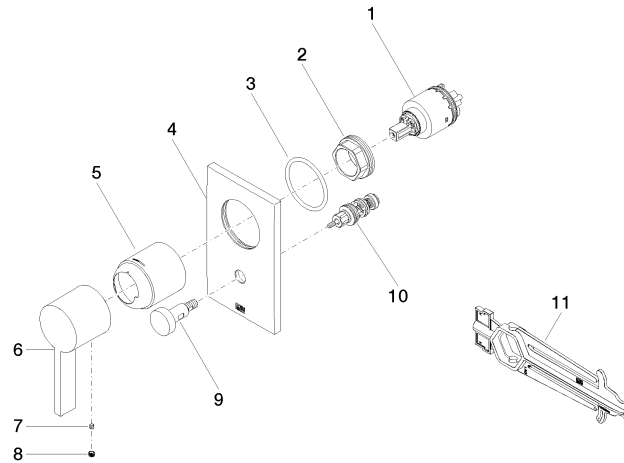
LGA_19

36 120 670

Product version up to 3/15/2019

Product version from 3/15/2019 to 2/20/2020

Product version from 2/20/2020





Concealed single-lever mixer with diverter - Brushed Chrome

IMO

36 120 670

Spare parts list

Product version up to 3/15/2019

Product version from 3/15/2019 to 2/20/2020

Product version from 2/20/2020

No.	Item Number	Name	Quantity used	Delivery time
	90 15 05 039 00 90	cartridge	11	2