



LULU Concealed two-way diverter - Chrome

LULU

36 200 710



- rotary diverter
- rosette 60 x 78 mm

	Chrome	36 200 710-00
	Brushed Platinum	36 200 710-06

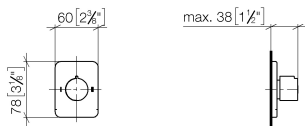
Required miscellaneous



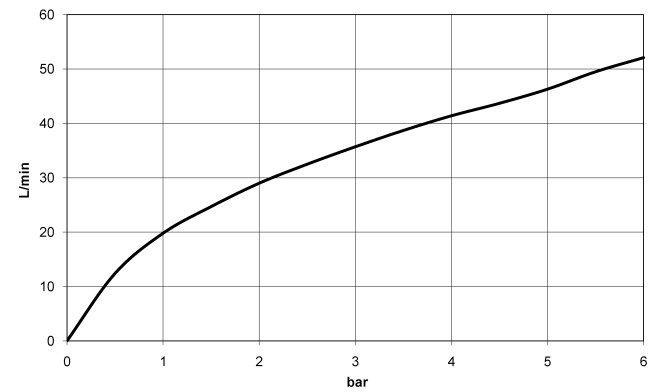
- |                                     |               |
|-------------------------------------|---------------|
| <b>Concealed two-way diverter -</b> | 35 202 970 90 |
| •max. recess depth 155 mm           |               |
| •min. recess depth 85 mm            |               |

36 200 710

mm [inches]

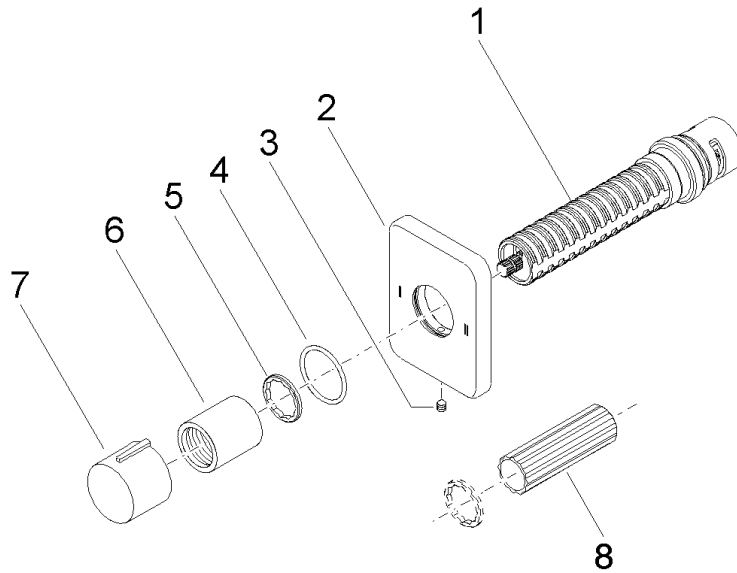


### Flow rate chart



### Certificates

WRAS\_2307045.



## Spare parts list

No.	Item Number	Name	Quantity used	Delivery time
1	90 90 03 304 10 90	diverter	1	2
2	09 27 71 114-00	rosette	1	60
3	90 31 11 007 00 90	pin	1	2
4	90 14 10 063 00 90	seal	1	2
5	09 16 01 025 90	ring	1	2
6	09 21 02 070-00	cover	1	10
7	09 20 97 030-00	handle	1	10
8	90 30 09 010 00 90	key	1	2