

## TARA Concealed three-way diverter - Brushed Champagne (22kt Gold)

TARA

36 210 882 Product version from 4/1/2022



- rotary diverter
- rosette 60 mm
- WRAS

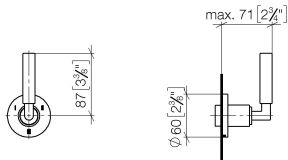
|   |                                |               |
|---|--------------------------------|---------------|
|    | Brushed Champagne (22kt Gold)  | 36 210 882-46 |
|    | Chrome                         | 36 210 882-00 |
|    | Brushed Platinum               | 36 210 882-06 |
|    | Platinum                       | 36 210 882-08 |
|    | Dark Chrome                    | 36 210 882-19 |
|    | Brushed Durabronze (23kt Gold) | 36 210 882-28 |
|    | Matte Black                    | 36 210 882-33 |
|    | Brushed Dark Brass             | 36 210 882-39 |
|    | Brushed Bronze                 | 36 210 882-42 |
|   | Champagne (22kt Gold)          | 36 210 882-47 |
|  | Brushed Chrome                 | 36 210 882-93 |
|  | Brushed Dark Platinum          | 36 210 882-99 |

### Required miscellaneous



- Concealed three-way diverter -** 35 203 970 90
- max. recess depth 160 mm
  - min. recess depth 85 mm

mm [inches]



**Flow rate chart**



**Codes & Standards**

DIN 4109

ISO 3822

Scottish Water  
Byelaws

UK Water Supply  
Regulations

Ü-Zeichen



## TARA Concealed three-way diverter - Brushed Champagne (22kt Gold)

---

TARA

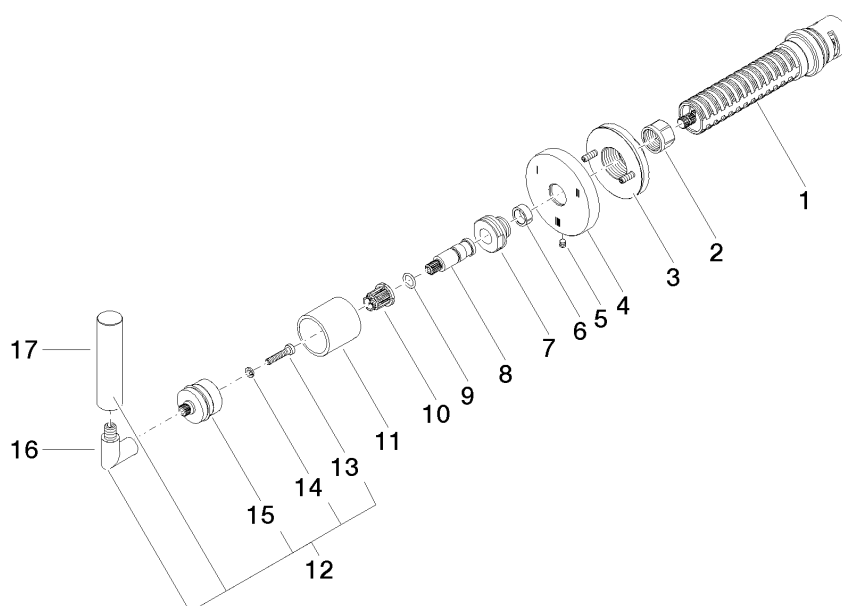
36 210 882 Product version from 4/1/2022

### Certificates and sustainability

---

LGA\_38

WRAS\_2307



## Spare parts list

| No.  | Item Number        | Name       | Quantity used | Delivery time |
|--|--------------------|------------|---------------|---------------|
| 1  | 90 90 03 303 10 90 | diverter   | 1.00          | 2             |
| 11   | 09 21 02 144-46    | sleeve     | 1.00          | 60            |
| 10   | 90 12 12 002 00 90 | fixing cap | 1.00          | 2             |
| 8  | 09 29 06 022 90    | spindle    | 1.00          | 2             |
| 5  | 09 31 11 294 90    | pin        | 1.00          | 2             |
| 3  | 90 21 02 181 00 90 | disc       | 1.00          | 2             |
| 17   | 09 20 88 052-46    | handle     | 1.00          | 30            |
| 7  | 09 24 05 002 90    | nipple     | 1.00          | 2             |
| 4  | 09 27 89 117-46    | rosette    | 1.00          | 60            |
| 12   | 04 20 88 052 10-46 | handle     | 1.00          | 60            |
| 16   | 04 18 20 022 00-46 | angle      | 1.00          | -             |
| Spare part can no longer be ordered, please order the replacement item |                    |            |               |               |
| 15   | 90 12 12 219 00-46 | base       | 1.00          | 30            |
| 14   | 90 30 11 029 00 90 | disc       | 1.00          | 2             |
| 2  | 90 23 30 023 00 90 | nut        | 1.00          | 2             |
| 9  | 90 14 10 060 00 90 | seal       | 1.00          | 2             |
| 6  | 90 14 15 020 03 90 | ring       | 1.00          | 2             |
| 13   | 90 30 30 075 00 90 | screw      | 1.00          | 2             |