


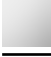
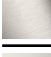



MADISON Wall valve clockwise closing 1/2" - Durabrand (23kt Gold)

MADISON


36 607 361



- rosette Ø 55 mm
- head part with cut-to-length spindle and sleeve
- 3x porcelain insert: HOT, COLD and NEUTRAL
- WRAS

	Durabrand (23kt Gold)	36 607 361-09
	Chrome	36 607 361-00
	Brushed Platinum	36 607 361-06
	Platinum	36 607 361-08
	Brushed Durabrand (23kt Gold)	36 607 361-28
	Brushed Dark Platinum	36 607 361-99

Required miscellaneous

	<b>Wall valve 1/2" -</b> •max. recess depth 145 mm •min. recess depth 75 mm	35 607 970 90
---	---	---------------

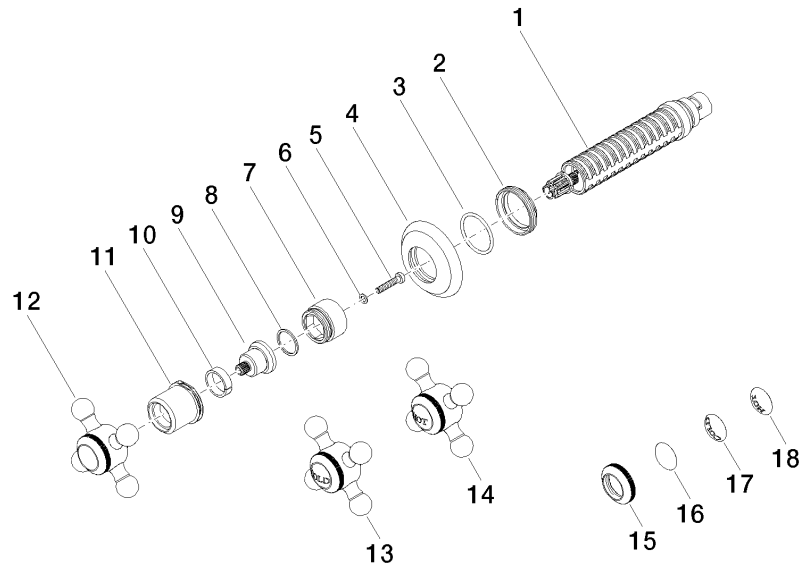
36 607 361



Codes & Standards			
ASME A112.18.1	cUPC	DIN 4109	EN 1111
EN 200	ISO 3822	Scottish Water Byelaws	UK Water Supply Regulations
Ü-Zeichen			

Certificates and sustainability				
DVGW_DW-6501DN0	WRAS_2011	LGA_29	WRAS_2010	DVGW_DW-6512DN0
LGA_29	IAPMO_4976 (			

36 607 361



## Spare parts list

No.	Item Number	Name	Quantity used	Delivery time
	17 09 26 01 010 90	accessories	1.00	2
	9 09 12 12 064-09	base	1.00	60
	14 04 20 36 100 01-09	handle ( hot )	1.00	40
	7 09 18 30 007-09	sleeve	1.00	60
	13 04 20 36 100 00-09	handle ( cold )	1.00	40
	1 90 90 03 143 00 90	top	1.00	2
	16 09 26 01 016 90	accessories	1.00	2
	4 09 27 36 102-09	rosette	1.00	40
	18 09 26 01 011 90	accessories	1.00	2
	15 09 20 36 005-09	handle	1.00	40
	6 09 30 11 194 90	disc	1.00	2
	12 04 20 36 100 02-09	handle	1.00	40
	11 09 21 02 161-09	cover	1.00	40
	2 09 23 10 125-00	nut	1.00	10
	5 90 30 30 075 00 90	screw	1.00	2
	3 90 14 10 063 00 90	seal	1.00	2
	8 90 28 10 030 00 90	ring	1.00	2
	10 90 14 15 021 00 90	ring	1.00	2