

SYMETRICS Wall valve anti-clockwise closing 3/4" - Platinum

SYMETRICS


36 608 985    Product version from 6/1/2024

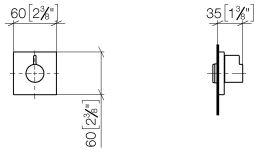


- rosette 60 x 60 mm
- head part with cut-to-length spindle and sleeve
- WRAS

	Platinum	36 608 985-08
	Chrome	36 608 985-00
	Brushed Platinum	36 608 985-06
	Dark Chrome	36 608 985-19
	Brushed Light Gold	36 608 985-27
	Brushed Durabronze (23kt Gold)	36 608 985-28
	Matte Black	36 608 985-33
	Brushed Chrome	36 608 985-93
	Brushed Dark Platinum	36 608 985-99

Required miscellaneous

- |   |   |               |
|---|---|---------------|
|  | <b>Wall valve 3/4" -</b><br>• max. recess depth 145 mm<br>• min. recess depth 75 mm | 35 608 970 90 |
|---|---|---------------|

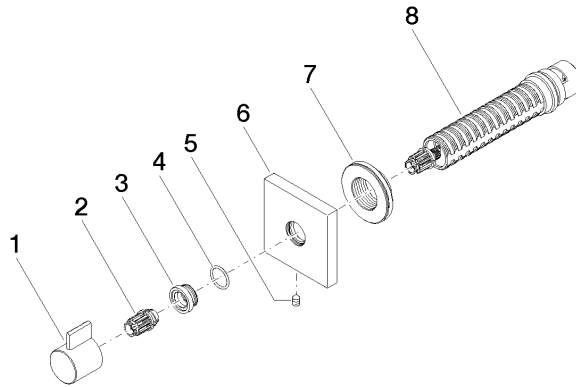


Codes & Standards

ASME A112.18.1	cUPC	Scottish Water Byelaws	UK Water Supply Regulations
----------------	------	---------------------------	--------------------------------

Certificates and sustainability

WRAS_2010	IAPMO_4976 (
-----------	--------------



## Spare parts list

No.	Item Number	Name	Quantity used	Delivery time
8	90 90 03 128 00 90	top	1.00	2
1	09 20 98 002-08	handle	1.00	40
2	09 12 12 005 90	fixing cap	1.00	2
3	09 12 12 043-08	base	1.00	40
4	09 14 10 017 90	seal	1.00	2
7	09 21 02 151 90	sleeve	1.00	2
6	09 27 98 014-08	rosette	1.00	40
5	90 31 11 004 00 90	pin	1.00	2