

CYO Wall-mounted basin mixer without pop-up waste - Brushed Durabrass (23kt Gold)

CYO


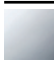





36 707 811



- 160mm projection
- fixed spout
- rectangular, air-enriched flow
- hole diameter valve 37 mm
- hole diameter spout 37 mm
- handle Ø 60mm
- max. flow 4.5 l/min
- lead-free
- This product can help a building meet the requirements of Green Building Rating Systems, e.g. LEED®, BREEAM®, DGNB

NOTE: The handle inserts must be ordered separately from the fittings!

NOTE: The handle inserts must be ordered separately from the fittings!

	Brushed Durabrass (23kt Gold)	36 707 811-28
	Chrome	36 707 811-00
	Brushed Platinum	36 707 811-06
	Dark Chrome	36 707 811-19
	Platinum / Brushed Platinum	36 707 811-36
	Durabrass / Brushed Durabrass (23kt Gold)	36 707 811-38
	Brushed Dark Platinum	36 707 811-99

Required miscellaneous



- Concealed wall-mounted mixer centred spout -** 35 700 970 90
- max. recess depth 145 mm
 - min. recess depth 85 mm

Required miscellaneous



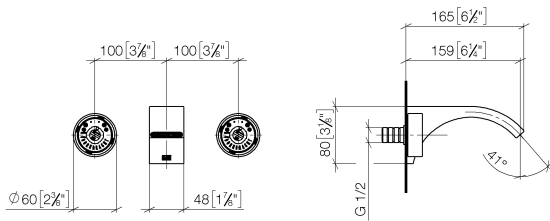
- Concealed wall-mounted mixer variable positioning -** 35 720 970 90
- min. recess depth 85 mm
 - max. recess depth 145 mm

CYO Wall-mounted basin mixer without pop-up waste - Brushed Durabross (23kt Gold)

CYO

36 707 811

mm [inches]



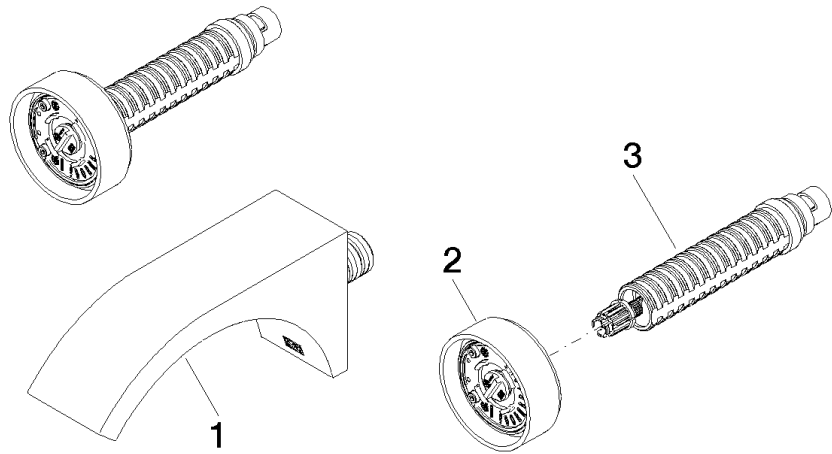
Flow rate chart



Certificates

WRAS_2111006. IAPMO_N-4976 (2). IAPMO_6397 (2). LGA_38121.

36 707 811



Spare parts list

No.	Item Number	Name	Quantity used	Delivery time
1	13 800 811-28	CYO Wall-mounted basin spout without pop-up waste - Brushed Durabross (23kt Gold)	1	20
2	90 18 40 290 00-28	handle	1	20
3	90 90 03 171 01 90	top	1	2