

VAIA Wall-mounted basin mixer without pop-up waste - Brushed Dark Platinum

VAIA

36 712 809



- 190mm projection
- fixed spout
- circular, air-enriched flow
- hole diameter valve 37 mm
- hole diameter spout 40 mm
- rosettes Ø 60 mm
- max. flow 5.7 l/min
- lead-free
- This product can help a building meet the requirements of Green Building Rating Systems, e.g. LEED®, BREEAM®, DGNB

| | | |
|---|--------------------------------|---------------|
|  | Brushed Dark Platinum | 36 712 809-99 |
|  | Chrome | 36 712 809-00 |
|  | Brushed Platinum | 36 712 809-06 |
|  | Platinum | 36 712 809-08 |
|  | Dark Chrome | 36 712 809-19 |
|  | Brushed Durabronze (23kt Gold) | 36 712 809-28 |
|  | Brushed Champagne (22kt Gold) | 36 712 809-46 |
|  | Champagne (22kt Gold) | 36 712 809-47 |

Required miscellaneous



- Concealed wall-mounted mixer centred spout -** 35 700 970 90
- max. recess depth 145 mm
 - min. recess depth 85 mm

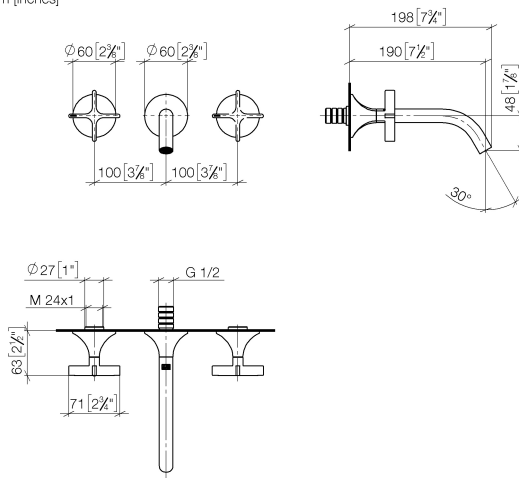
Required miscellaneous



- Concealed wall-mounted mixer variable positioning -** 35 720 970 90
- min. recess depth 85 mm
 - max. recess depth 145 mm

36 712 809

mm [inches]



Flow rate chart



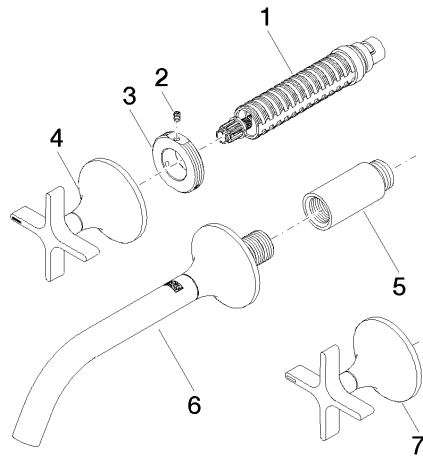
Trajectory diagram



Certificates

LGA_29297.

WRAS_2312073.



Spare parts list

| No. | Item Number | Name | Quantity used | Delivery time |
|-----|--------------------|---|---------------|---------------|
| 1 | 90 90 03 157 00 90 | top | 2 | 2 |
| 2 | 09 31 11 008 90 | pin | 2 | 2 |
| 3 | 09 21 02 163 90 | disc | 2 | 2 |
| 4 | 90 20 80 011 00-99 | handle (hot) | 1 | 30 |
| 5 | 09 24 03 081 10 90 | extension | 1 | 2 |
| 6 | 13 800 809-99 | VAIA Wall-mounted basin spout without pop-up waste - Brushed Dark Platinum | 1 | 30 |
| 7 | 90 20 80 010 00-99 | handle (cold) | 1 | 30 |