

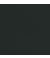




EDITION PRO Wall-mounted single-lever basin mixer without pop-up waste -  
Matte Black

36 812 626



- 200mm projection
- fixed spout
- circular, air-enriched flow
- hole diameter spout 37 mm
- hole diameter single-lever mixer 57 mm
- rosette for spout Ø 55mm
- rosette for mixer Ø 78mm
- max. flow 7 l/min
- lead-free
- WRAS

	Matte Black	36 812 626-33
	Chrome	36 812 626-00
	Brushed Chrome	36 812 626-93

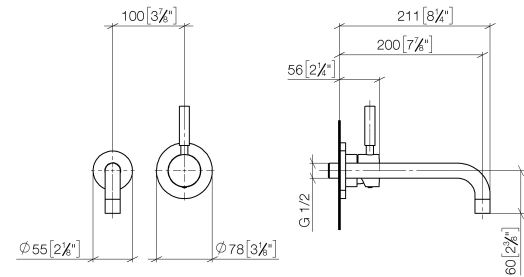
Required miscellaneous



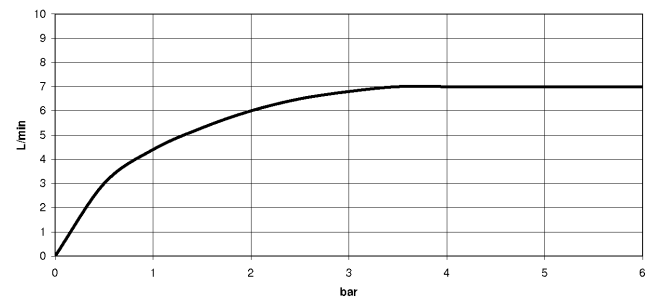
- EDITION PRO Concealed wall-mounted single-lever mixer mixer on right -** 35 870 970 90
- max. recess depth mm
  - min. recess depth mm

**EDITION PRO Wall-mounted single-lever basin mixer without pop-up waste -  
Matte Black**

36 812 626  
mm [inches]



Flow rate chart



**Codes & Standards**

DIN 4109

ISO 3822

Scottish Water  
Byelaws

UK Water Supply  
Regulations

Ü-Zeichen



## EDITION PRO Wall-mounted single-lever basin mixer without pop-up waste - Matte Black

---

36 812 626

Certificates

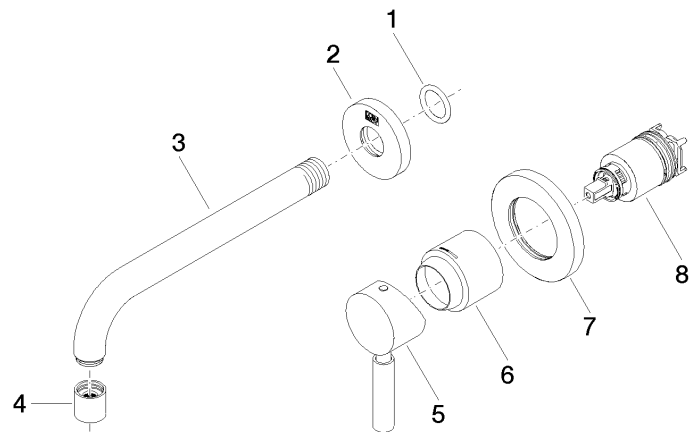
---

WRAS\_2107

LGA\_9

**EDITION PRO Wall-mounted single-lever basin mixer without pop-up waste -  
Matte Black**

36 812 626



**Spare parts list**

No.	Item Number	Name	Quantity used	Delivery time
1	90 14 10 026 00 90	seal	1	2
2	09 27 22 503-33	rosette	1	30
3	04 28 22 116 10-33	spout	1	30
4	90 23 01 019 00-33	aerator	1	30
5	90 20 62 040 00-33	handle	1	30
6	09 11 02 522-33	cover	1	30
7	90 27 62 011 00-33	rosette	1	30
8	90 15 05 064 01 90	cartridge	1	2