

## TARA Wall-mounted sink mixer with extending spout - Chrome

TARA

36 819 892



- 325-495mm projection
- pivoting spout
- laminar flow
- rosette Ø 55 mm
- max. flow 19.9 l/min at 3 bar flow pressure
- lead-free

### Required miscellaneous



#### **Concealed wall-mounted mixer centred spout -**

35 700 970 90

- max. recess depth 145 mm
- min. recess depth 85 mm

### Required miscellaneous



#### **Concealed wall-mounted mixer variable positioning -**

35 720 970 90

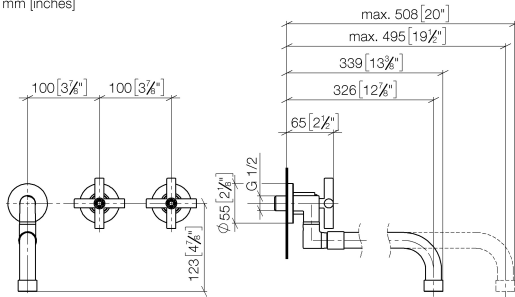
- max. recess depth 145 mm
- min. recess depth 85 mm

## TARA Wall-mounted sink mixer with extending spout - Chrome

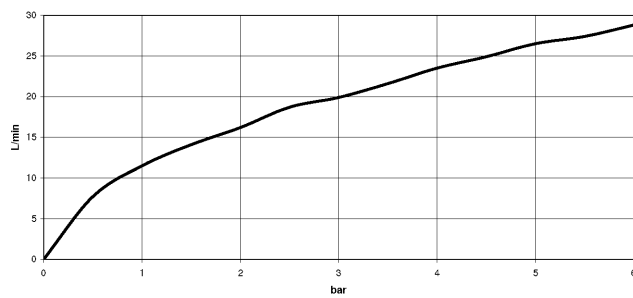
TARA

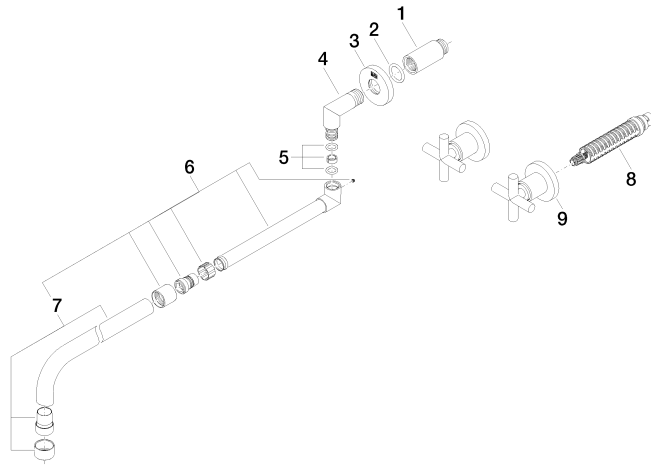
36 819 892

mm [inches]



### Flow rate chart







## TARA Wall-mounted sink mixer with extending spout - Chrome

TARA

36 819 892

### Spare parts list

No.	Item Number	Name	Quantity used	Delivery time
	09 24 03 081 10 90	extension	11	2