

META Wall-mounted single-lever basin mixer without pop-up waste - Brushed Chrome

36 860 660
Product version from 7/1/2023



- 190mm projection
- fixed spout
- circular, air-enriched flow
- hole diameter spout 37 mm
- hole diameter single-lever mixer 57 mm
- rosette for spout Ø 55mm
- rosette for mixer Ø 78mm
- max. flow 5.7 l/min
- lead-free
- This product can help a building meet the requirements of Green Building Rating Systems, e.g. LEED®, BREEAM®, DGNB
- WRAS

| | | |
|---|-------------------------------|---------------|
|  | Brushed Chrome | 36 860 660-93 |
|  | Chrome | 36 860 660-00 |
|  | Brushed Platinum | 36 860 660-06 |
|  | Dark Chrome | 36 860 660-19 |
|  | Light Gold | 36 860 660-26 |
|  | Brushed Light Gold | 36 860 660-27 |
|  | Matte Black | 36 860 660-33 |
|  | Brushed Bronze | 36 860 660-42 |
|  | Brushed Champagne (22kt Gold) | 36 860 660-46 |
|  | Champagne (22kt Gold) | 36 860 660-47 |
|  | Brushed Dark Platinum | 36 860 660-99 |

META Wall-mounted single-lever basin mixer without pop-up waste - Brushed Chrome

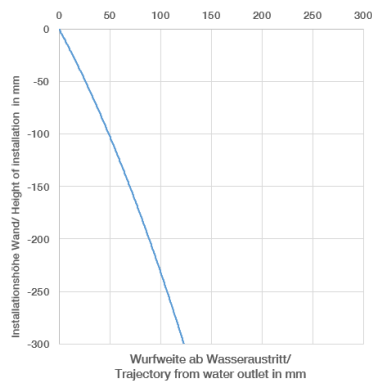
36 860 660 Product version from 7/1/2023
mm [inches]



Flow rate chart



Trajectory diagram



Codes & Standards

DIN 4109

EN 817

ISO 3822

Scottish Water
Byelaws

UK Water Supply
Regulations

Ü-Zeichen



META Wall-mounted single-lever basin mixer without pop-up waste - Brushed Chrome

36 860 660 Product version from 7/1/2023

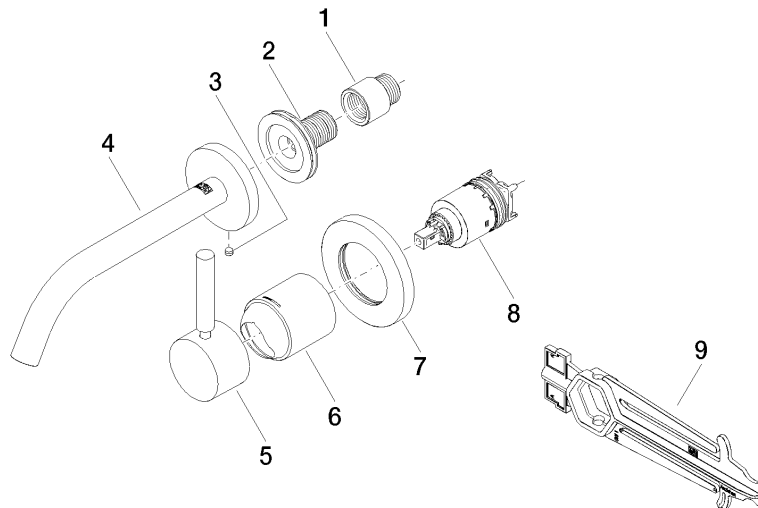
Certificates

| | | |
|---------------------|-----------|--------|
| DVGW_DW- 6512DN0 | WRAS_2107 | LGA_29 |
|---------------------|-----------|--------|

META Wall-mounted single-lever basin mixer without pop-up waste - Brushed Chrome

36 860 660 Product version from 7/1/2023

Parts for other
finishes can be found
here: [Chrome](#)



Spare parts list

| No. | Item Number | Name | Quantity used | Delivery time |
|-----|--------------------|-----------|---------------|---------------|
| 1 | 09 24 03 072 10 90 | nipple | 1 | 2 |
| 2 | 90 24 03 280 00 90 | nipple | 1 | 2 |
| 3 | 09 31 11 112 90 | pin | 1 | 60 |
| 4 | 90 28 22 323 00-93 | spout | 1 | 20 |
| 5 | 90 20 66 007 00-93 | handle | 1 | 20 |
| 6 | 09 11 02 288-93 | cover | 1 | 20 |
| 7 | 90 27 62 011 00-93 | rosette | 1 | 20 |
| 8 | 90 15 05 064 01 90 | cartridge | 1 | 2 |
| 9 | 90 30 09 064 00 90 | key | 1 | 2 |