








LISSÉ Wall-mounted single-lever basin mixer without pop-up waste - Brushed Chrome

36 860 845
Product version from 4/1/2024



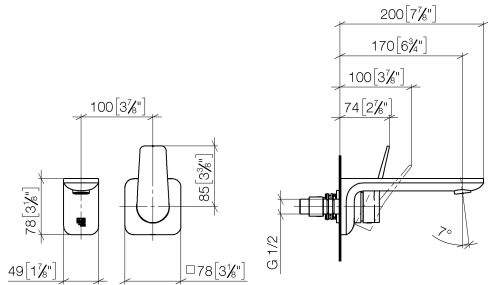
- 170mm projection
- fixed spout
- circular, air-enriched flow
- hole diameter spout 37 mm
- hole diameter single-lever mixer 57 mm
- rosette 78 x 78 mm
- max. flow 5.7 l/min
- lead-free
- This product can help a building meet the requirements of Green Building Rating Systems, e.g. LEED®, BREEAM®, DGNB
- WRAS

	Brushed Chrome	36 860 845-93
	Chrome	36 860 845-00
	Brushed Platinum	36 860 845-06
	Dark Chrome	36 860 845-19
	Brushed Light Gold	36 860 845-27
	Matte Black	36 860 845-33
	Brushed Dark Platinum	36 860 845-99



# LISSÉ Wall-mounted single-lever basin mixer without pop-up waste - Brushed Chrome

36 860 845    Product version from 4/1/2024  
mm [inches]



Flow rate chart



## Codes & Standards

ASME A112.18.1	cUPC	DIN 4109	EN 817
EPA WaterSense	ISO 3822	NSF372	NSF61
Scottish Water Byelaws	UK Water Supply Regulations	Ü-Zeichen	WaterSense





LISSE Wall-mounted single-lever basin mixer without pop-up waste - Brushed Chrome

36 860 845 Product version from 4/1/2024

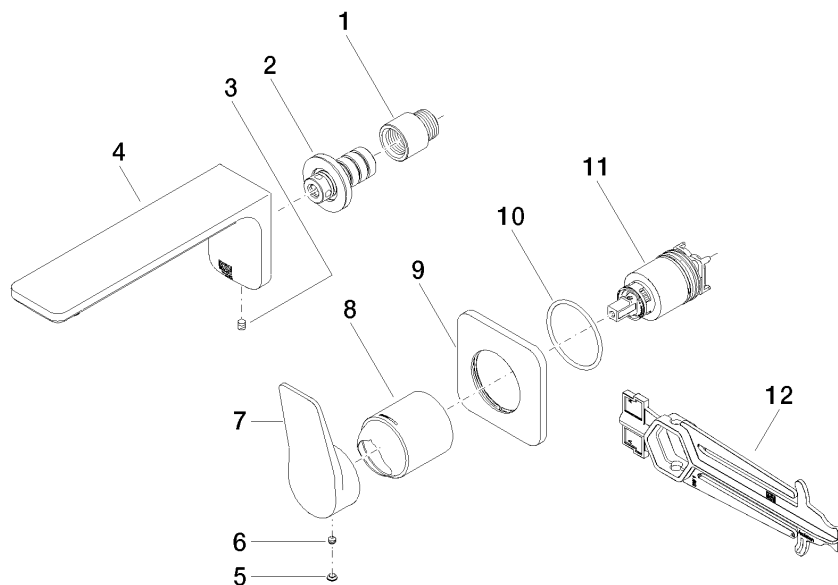
Certificates

IAPMO_N-4976	DVGW_DW-6512DN0	IAPMO_6397	LGA_29	WRAS_2107
IAPMO_8834	IAPMO_4976 (			

## LISSÉ Wall-mounted single-lever basin mixer without pop-up waste - Brushed Chrome

36 860 845 Product version from 4/1/2024

Parts for other  
finishes can be found  
here: [Chrome](#)



### Spare parts list

No.	Item Number	Name	Quantity used	Delivery time
1	09 24 03 072 10 90	nipple	1	2
2	90 24 03 108 00 90	nipple set	1	2
3	90 31 11 004 00 90	pin	1	2
4	90 11 84 021 00-93	spout	1	20
5	90 31 20 087 00-93	plug	1	20
6	90 31 11 063 00 90	pin	1	2
7	09 20 84 021-93	handle	1	20
8	09 11 02 288-93	cover	1	20
9	90 27 84 020 00-93	rosette	1	30
10	90 14 10 049 00 90	seal	1	2
11	90 15 05 046 02 90	cartridge	1	2
12	90 30 09 064 00 90	key	1	2