

SERENITY SKY Rain panel for recessed ceiling installation with light - Brushed Bronze

41 771 979 Product version from 9/1/2024



- exposed trim parts
- Rain panel with 2 different spray modes
- PURIFY RAIN, 175 x 175 mm, max. flow rate 10 l/min (at 3 bar)
- FULL RAIN, 455 x 315 mm, max. flow rate 14 l/min (at 3 bar)
- Rain panel, 600 x 420 mm
- min. recess depth 150 mm
- weight 15kg
- feed pipe (hot/cold): 2x DN 20
- with anti-scale system
- Recommended control element: xTool

Ceiling module power supply

- 24V DC (CV)

Ambient lighting








- LED coloured light RGBW
- Bulbs protected against splashing water

Activation

- ZigBee Light Link RGBW controller
- Provided by customer: Zigbee gateway

Environment

- Not suitable for outdoor use.
- Not suitable for use in a steam room.
- Not suitable for use in chlorinated or salty environments.
- Comply with the protection zone regulations as defined in DIN VDE 0100, Part 701 (IEC 60364-7-701).
- Dornbracht recommends consulting a systems integrator.

	Brushed Bronze	41 771 979-42
	Chrome	41 771 979-00
	Dark Chrome	41 771 979-19
	Brushed Champagne (22kt Gold)	41 771 979-46
	Champagne (22kt Gold)	41 771 979-47
	Brushed Stainless Steel	41 771 979-86
	Brushed Dark Platinum	41 771 979-99

Required miscellaneous

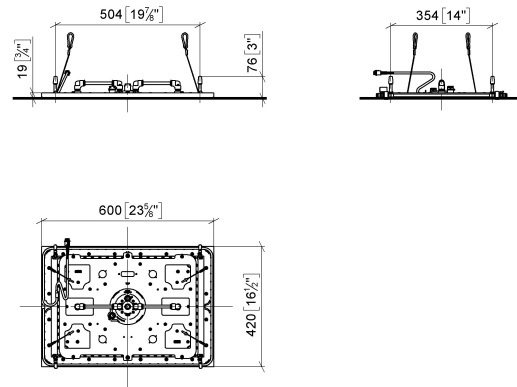


SERENITY SKY Concealed ceiling installation box with light - 35 771 970 90

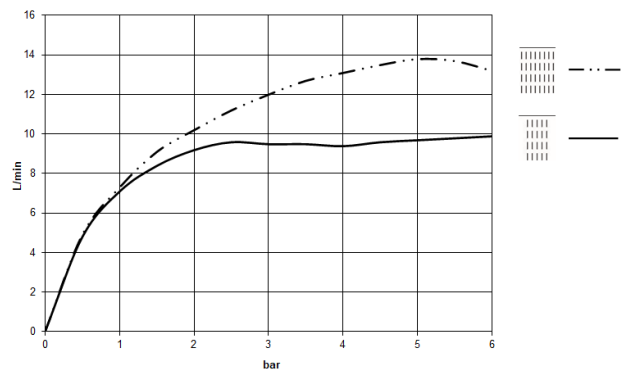
- concealed rough parts
- flush-mounted reflection box, 662 x 482 mm, RAL 9003, Signal White
- 2x female thread 1/2" connections
- min. recess depth mm
- weight 15kg
- Supply pipe 7 m
- Input 100-240V AC 50-60Hz
- Output 24V DC SELV / Class 2
- ZigBee Light Link RGBW controller
- Provided by customer: Zigbee gateway

SERENITY SKY Rain panel for recessed ceiling installation with light - Brushed Bronze

41 771 979 Product version from 9/1/2024
mm [inches]
1:10

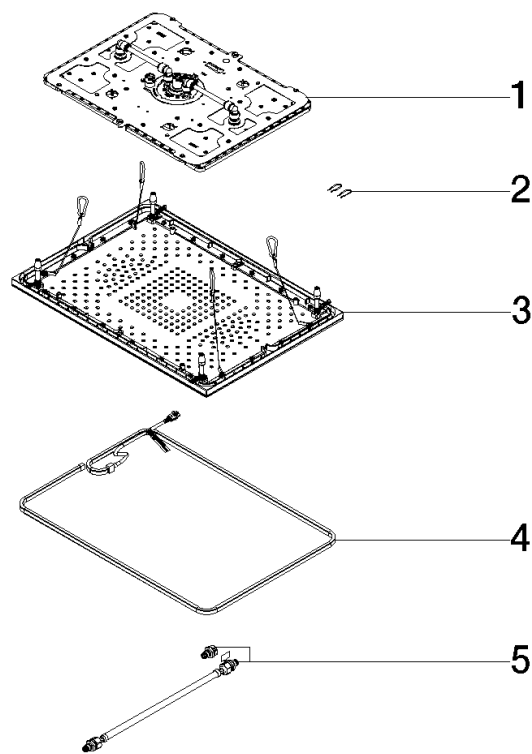


Flow rate chart



SERENITY SKY Rain panel for recessed ceiling installation with light - Brushed Bronze

41 771 979 Product version from 9/1/2024



Spare parts list

No.	Item Number	Name	Quantity used	Delivery time
1	90 12 01 095 02 90	shower	1	-
Spare part can no longer be ordered, please order the replacement item				
2	91 16 02 053 00 90	holder	1	2
3	90 12 05 106 00-42	cover	1	30
4	90 10 01 263 00 90	electronic accessories	1	2
5	90 30 04 033 00 90	hose	1	2