

# Neck and back massage - Brushed stainless steel / platinum matt

ST 050 522 0985



- max. flow 55 l/min at 3 bar flow pressure
- PEARLSTREAM
- rain shower with anti-scale system
- suitable for xGRID (when using installation track + 12 mm recess depth)
- concealed rough parts
- exposed trim parts
- temperature setting via thermostat
- overhead shower: rain flow

## Individual components of this set

You need the following components for this set

2x	35 085 970 90	2x	35 206 970 90
			
1x	35 531 970 90	1x	35 607 970 90
			
2x	12 370 970 90	1x	13 425 979-06
			
2x	36 517 979-06	1x	36 503 985-06
			
4x	36 607 985-06	1x	12 940 979-86
			
1x	41 400 979-86		
			

## Neck and back massage - Brushed stainless steel / platinum matt

---

ST 050 522 0985



- red brass, lead-free
- female thread 1/2" connection
- 1x female thread 1/2" outlet
- dust cover
- anti-water packing
- soundproofing
- WRAS 240502014, 1904021

For wall-mounted spouts and wall outlet elbows with 1/2" connection.

## Neck and back massage - Brushed stainless steel / platinum matt

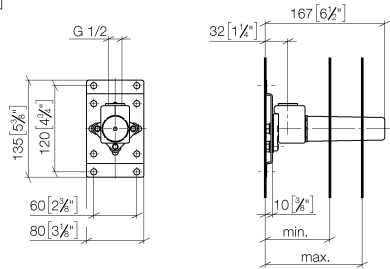
---

ST 050 522 0985

Neck and back massage - Brushed stainless steel / platinum matt

ST 050 522 0985

mm [inches]



	min	max
CL. 1	90 [3 1/2"]	163 [6 3/8"]
CL. 2	68 [2 5/8"]	135 [5 3/8"]
Domicil	90 [3 1/2"]	163 [6 3/8"]
Gentle	90 [3 1/2"]	163 [6 3/8"]
IMO	90 [3 1/2"]	163 [6 3/8"]
Lissé	90 [3 1/2"]	163 [6 3/8"]
MEM	90 [3 1/2"]	163 [6 3/8"]
Symetrics	90 [3 1/2"]	163 [6 3/8"]
Vaia	90 [3 1/2"]	163 [6 3/8"]

Certificates

LGA\_29

WRAS\_240502

Neck and back massage - Brushed stainless steel / platinum matt

---

ST 050 522 0985

Codes & Standards

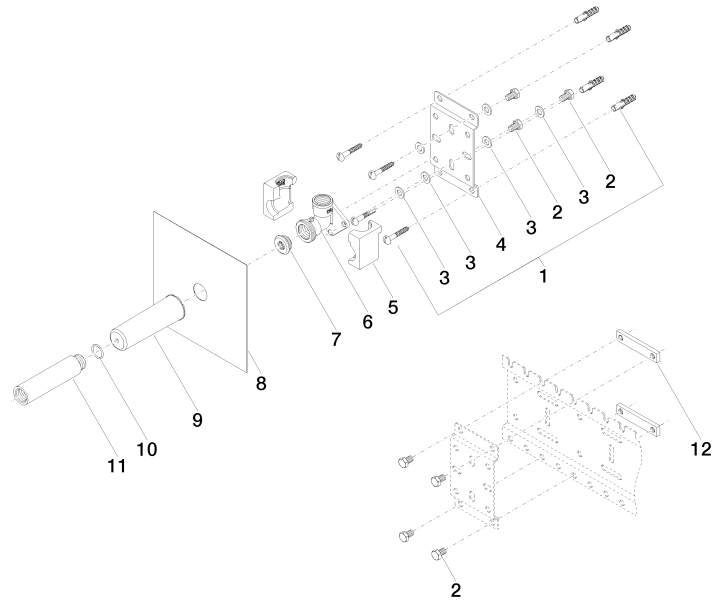
---

DIN 4109	ISO 3822	Scottish Water Byelaws	UK Water Supply Regulations
----------	----------	---------------------------	--------------------------------

Ü-Zeichen

Neck and back massage - Brushed stainless steel / platinum matt

ST 050 522 0985

**Product version from 3/7/2023**



Neck and back massage - Brushed stainless steel / platinum matt

ST 050 522 0985

Spare parts list

Product version from 3/7/2023

No.	Item Number	Name	Quantity used	Delivery time
	04 30 31 024 01 90	fixing set	25	2

## Neck and back massage - Brushed stainless steel / platinum matt

---

ST 050 522 0985



- female thread 1/2" connection
- dust cover
- anti-water packing
- WRAS 2106011



Neck and back massage - Brushed stainless steel / platinum matt

ST 050 522 0985

Recommended miscellaneous



**xGRID Attachment set for  
integrating in the dry wall  
construction -**

12 340 970 90

Required miscellaneous

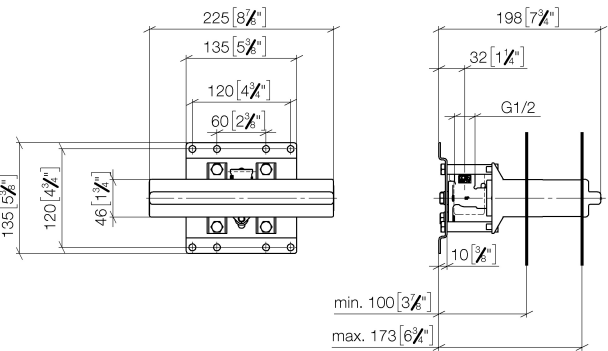


**xGRID Installation track 555 mm -** 12 360 970 90

**Neck and back massage - Brushed stainless steel / platinum matt**

ST 050 522 0985

mm [inches]



**Certificates**

LGA\_19                      WRAS\_2106



Neck and back massage - Brushed stainless steel / platinum matt

---

ST 050 522 0985

Codes & Standards

---

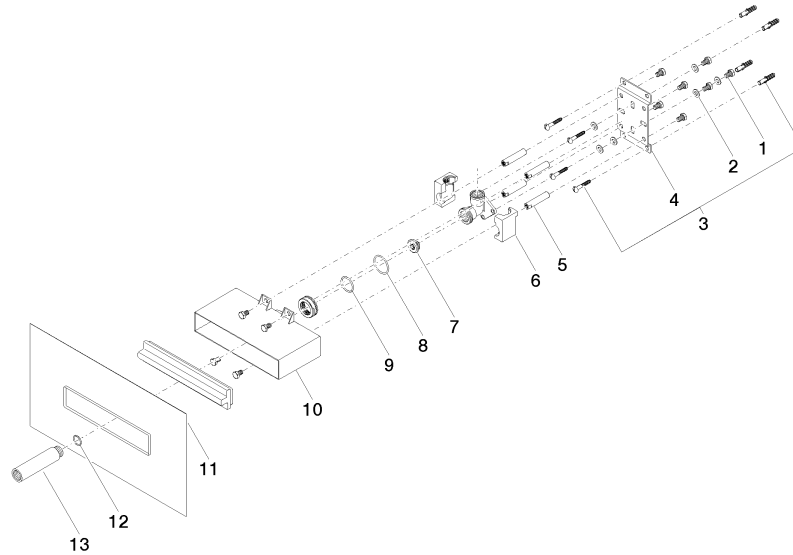
DIN 4109	ISO 3822	Scottish Water Byelaws	UK Water Supply Regulations
----------	----------	---------------------------	--------------------------------

Ü-Zeichen

## Neck and back massage - Brushed stainless steel / platinum matt

ST 050 522 0985

**Product version from 3/7/2023**





Neck and back massage - Brushed stainless steel / platinum matt

ST 050 522 0985

Spare parts list

Product version from 3/7/2023

No.	Item Number	Name	Quantity used	Delivery time
	09 30 30 152 90	screw	28	2

## Neck and back massage - Brushed stainless steel / platinum matt

---

ST 050 522 0985




- red brass, lead-free
- 2x back flow preventer
- 2x female thread 3/4" connections
- 1x female thread 3/4" outlet for additional valves
- 3x female thread 3/4" outlet, right/left alternatively
- 4x dust cover
- 4x anti-water packing
- soundproofing
- gauge 120 mm
- suitable for xGRID (when using installation track + 12 mm recess depth)
- WRAS 2011026


Neck and back massage - Brushed stainless steel / platinum matt

ST 050 522 0985


Recommended miscellaneous

	<b>Extension 46 mm -</b>	12 178 970 90
		

Recommended miscellaneous

	<b>xGRID Attachment set for integrating in the dry wall construction -</b>	12 340 970 90
		

Recommended miscellaneous

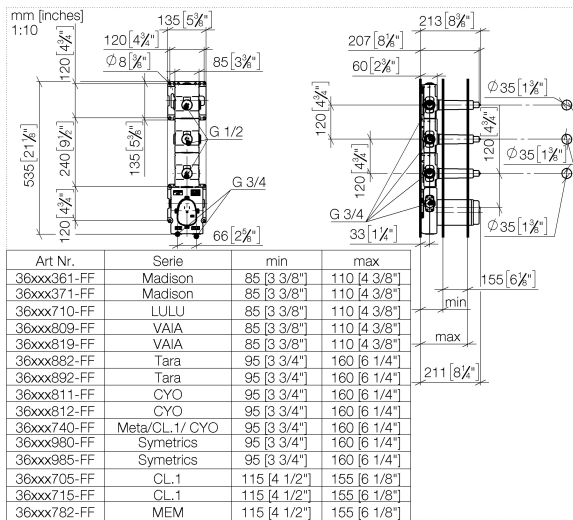
	<b>Extension 28 mm -</b>	12 177 970 90
		

Required miscellaneous

	<b>xGRID Installation track 555 mm -</b>	12 360 970 90
		

# Neck and back massage - Brushed stainless steel / platinum matt

ST 050 522 0985



## Certificates

ACS\_21 ACC LY

Belgaqua\_21-031-2

DVGW\_DW-6512DN0

WRAS\_2011



Neck and back massage - Brushed stainless steel / platinum matt

ST 050 522 0985

Codes & Standards

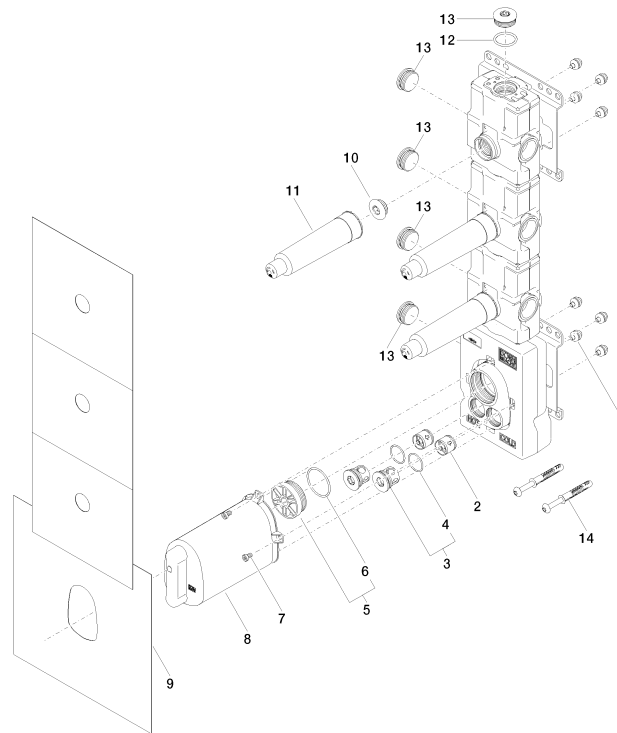
EN 1111	EN 1717	Scottish Water Byelaws	UK Water Supply Regulations
XP P 41-280			

## Neck and back massage - Brushed stainless steel / platinum matt

ST 050 522 0985

Product version up to 11/25/2021

**Product version from 1/1/2022**





Neck and back massage - Brushed stainless steel / platinum matt

ST 050 522 0985

Spare parts list

Product version up to 11/25/2021

Product version from 1/1/2022

No.	Item Number	Name	Quantity used	Delivery time
	90 23 01 091 00 90	set	36	2

## Neck and back massage - Brushed stainless steel / platinum matt

---

ST 050 522 0985



- red brass, lead-free
- female thread 1/2" connection
- 1x female thread 1/2" outlet
- dust cover
- anti-water packing
- soundproofing
- suitable for xGRID (when using installation track + 12 mm recess depth)
- WRAS 2010066

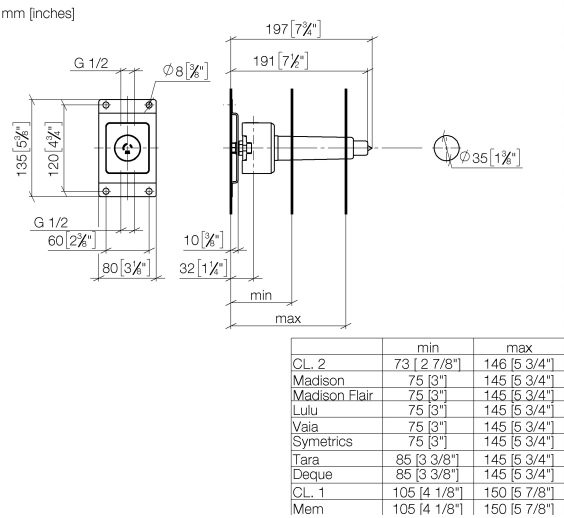
## Neck and back massage - Brushed stainless steel / platinum matt

---

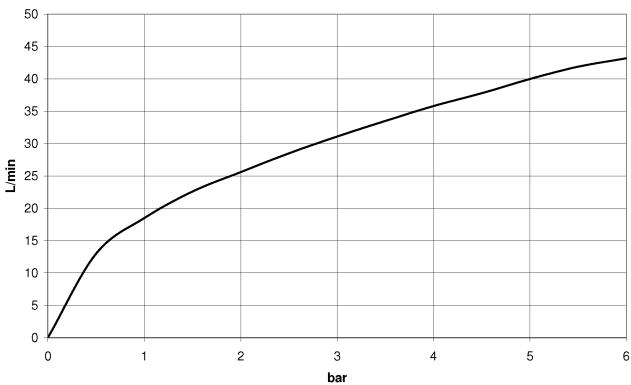
ST 050 522 0985

Neck and back massage - Brushed stainless steel / platinum matt

ST 050 522 0985



Flow rate chart



Certificates

DVGW\_DW-                      WRAS\_2010  
6501DN0



Neck and back massage - Brushed stainless steel / platinum matt

---

ST 050 522 0985

Codes & Standards

---

EN 200	Scottish Water Byelaws	UK Water Supply Regulations
--------	---------------------------	--------------------------------

## Neck and back massage - Brushed stainless steel / platinum matt

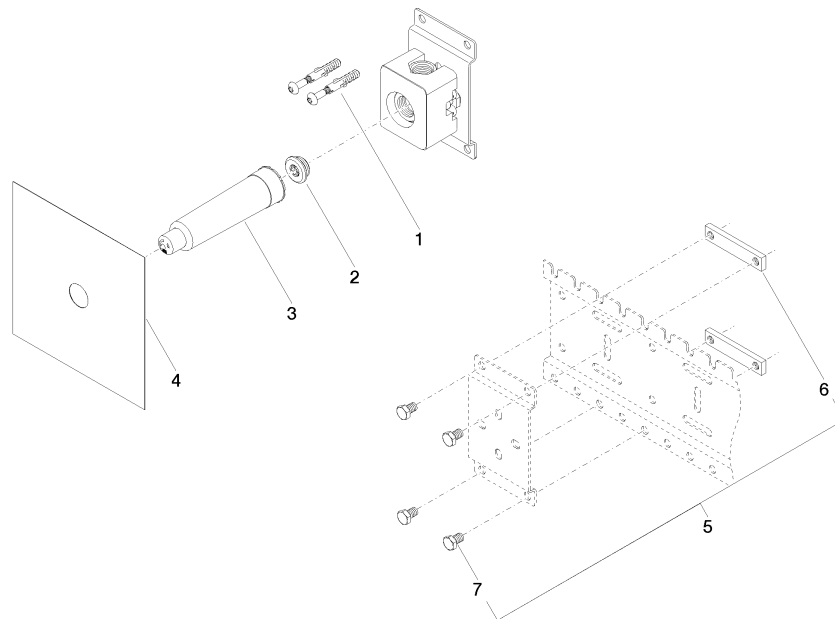
---

ST 050 522 0985



## Neck and back massage - Brushed stainless steel / platinum matt

ST 050 522 0985





Neck and back massage - Brushed stainless steel / platinum matt

ST 050 522 0985

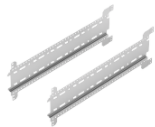
Spare parts list

No.	Item Number	Name	Quantity used	Delivery time
	04 30 31 024 01 90	fixing set	12	2

## Neck and back massage - Brushed stainless steel / platinum matt

---

ST 050 522 0985



- width 555mm
- height 135 mm
- depth 12 mm
- retaining screws and plugs

This set contains 2 xGrid installation tracks and includes fixing material

More about the xGRID installation track can be found in the Shower Book brochure

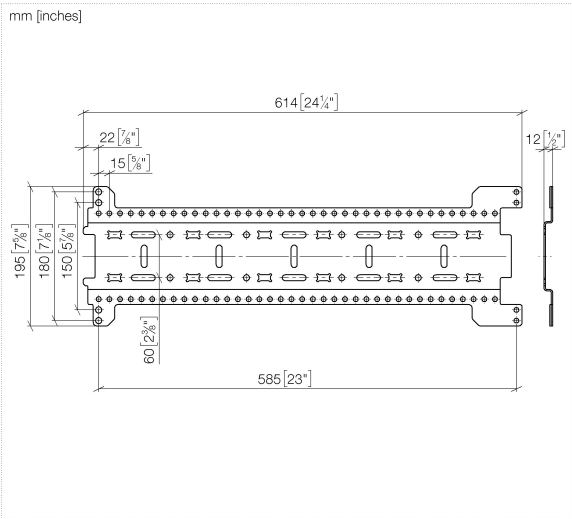
## Neck and back massage - Brushed stainless steel / platinum matt

---

ST 050 522 0985

# Neck and back massage - Brushed stainless steel / platinum matt

ST 050 522 0985



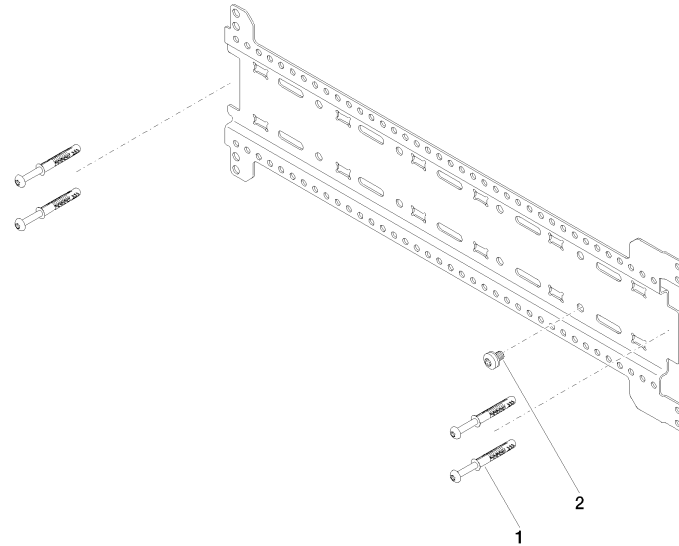
## Neck and back massage - Brushed stainless steel / platinum matt

---

ST 050 522 0985

## Neck and back massage - Brushed stainless steel / platinum matt

ST 050 522 0985





Neck and back massage - Brushed stainless steel / platinum matt

ST 050 522 0985

Spare parts list

No.	Item Number	Name	Quantity used	Delivery time
	04 30 31 054 00 90	fixing set	6	2



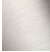












# Neck and back massage - Brushed stainless steel / platinum matt

ST 050 522 0985



- 22mm projection
- PEARLSTREAM
- plate 240 mm x 60 mm
- connection 1/2", for shortening
- plug-link mounting
- Max. flow rate 9.5 l/min (at 3 bar)

Fits: IMO, LULU, MADISON, MEM, TARA,  
CL.1, LISSÉ, VAIA, META, CYO

	Brushed Platinum	13 425 979-0
	Chrome	13 425 979-0
	Platinum	13 425 979-0
	Dark Chrome	13 425 979-1
	Light Gold	13 425 979-2
	Brushed Light Gold	13 425 979-2
	Brushed Durabronze (23kt Gold)	13 425 979-2
	Matte Black	13 425 979-3
	Brushed Bronze	13 425 979-4
	Brushed Champagne (22kt Gold)	13 425 979-4
	Champagne (22kt Gold)	13 425 979-4
	Brushed Chrome	13 425 979-9
	Brushed Dark Platinum	13 425 979-9

Neck and back massage - Brushed stainless steel / platinum matt

ST 050 522 0985

6  
—  
0  
—  
8  
—  
9  
—  
6  
—  
7  
—  
8  
—  
3  
—  
2  
—  
6  
—  
7  
—  
3  
—  
9  
—

Recommended miscellaneous



**Concealed wall elbow -**  
●max. recess depth 163 mm  
●min. recess depth 90 mm

35 085 970 90

Recommended miscellaneous



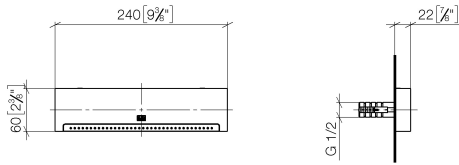
**Concealed wall elbow -**  
●max. recess depth 163 mm  
●min. recess depth 90 mm

35 085 970 90

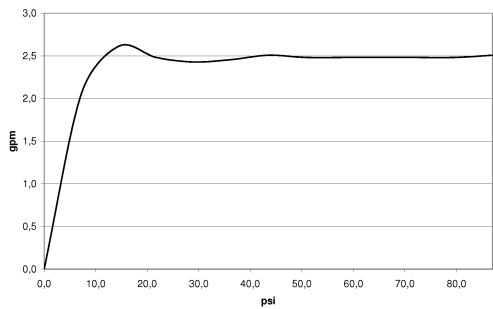
Neck and back massage - Brushed stainless steel / platinum matt

ST 050 522 0985

mm [inches]



Flow rate chart



Certificates

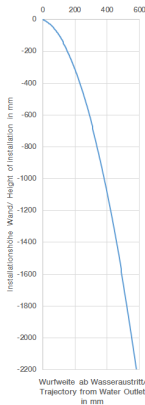
LGA\_19

IAPMO\_4976

Neck and back massage - Brushed stainless steel / platinum matt

ST 050 522 0985

Trajectory diagram



Codes & Standards

ASME A112.18.1cUPCDIN 4109ISO 3822

Ü-Zeichen

## Neck and back massage - Brushed stainless steel / platinum matt

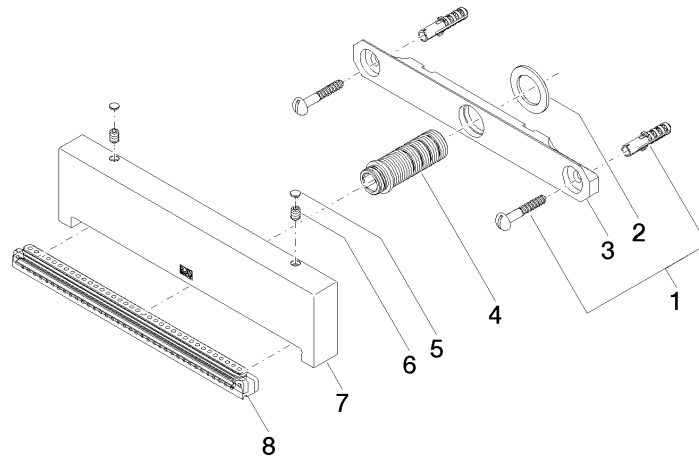
---

ST 050 522 0985

## Neck and back massage - Brushed stainless steel / platinum matt

ST 050 522 0985

**Product version from 10/1/2023**





Neck and back massage - Brushed stainless steel / platinum matt

ST 050 522 0985

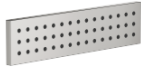
Spare parts list

Product version from 10/1/2023

No.	Item Number	Name	Quantity used	Delivery time
	04 30 31 024 01 90	fixing set	8	2

# Neck and back massage - Brushed stainless steel / platinum matt

ST 050 522 0985



Fits: IMO, LULU, MADISON, MEM, TARA,  
CL.1, LISSÉ, VAIA, META, CYO

- HORIZONTAL RAIN, max. flow rate 6 l/min (at 3 bar)
- with anti-scale system
- cover plate 240 x 60 mm
- 1/2" connection
- This product can help a building meet the requirements of Green Building Rating Systems, e.g. LEED®, BREEAM®, DGNB
- WRAS 1304001

	Brushed Platinum	36 517 979-0
	Chrome	36 517 979-0
	Platinum	36 517 979-0
	Dark Chrome	36 517 979-1
	Light Gold	36 517 979-2
	Brushed Light Gold	36 517 979-2
	Brushed Durabronze (23kt Gold)	36 517 979-2
	Matte Black	36 517 979-3
	Brushed Bronze	36 517 979-4
	Brushed Champagne (22kt Gold)	36 517 979-4
	Champagne (22kt Gold)	36 517 979-4
	Brushed Chrome	36 517 979-9
	Brushed Dark Platinum	36 517 979-9



Neck and back massage - Brushed stainless steel / platinum matt

ST 050 522 0985

6  
—  
0  
—  
8  
—  
9  
—  
6  
—  
7  
—  
8  
—  
3  
—  
2  
—  
6  
—  
7  
—  
3  
—  
9  
—

Required miscellaneous



**Concealed wall installation box -** 35 206 970 90  
•max. recess depth 173 mm  
•min. recess depth 100 mm

Recommended miscellaneous



**xGRID Attachment set for  
integrating in the dry wall  
construction -** 12 340 970 90

Required miscellaneous

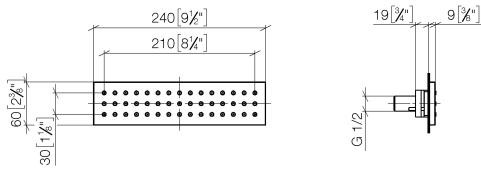


**xGRID Installation track 555 mm -** 12 360 970 90

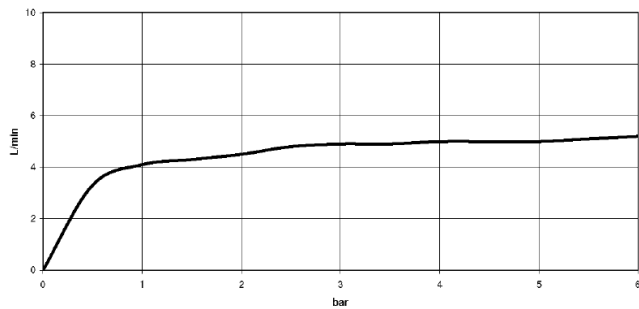
**Neck and back massage - Brushed stainless steel / platinum matt**

ST 050 522 0985

mm [inches]



**Flow rate chart**



**Certificates**

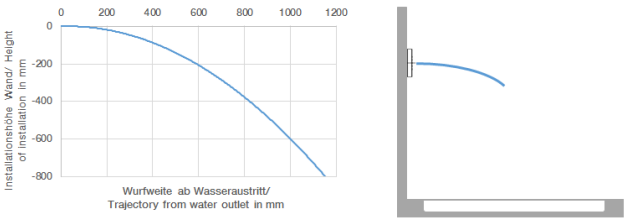
LGA\_19

WRAS\_1304

Neck and back massage - Brushed stainless steel / platinum matt

ST 050 522 0985

Trajectory diagram



Codes & Standards

DIN 4109

ISO 3822

Scottish Water  
Byelaws

UK Water Supply  
Regulations

Ü-Zeichen

## Neck and back massage - Brushed stainless steel / platinum matt

---

ST 050 522 0985

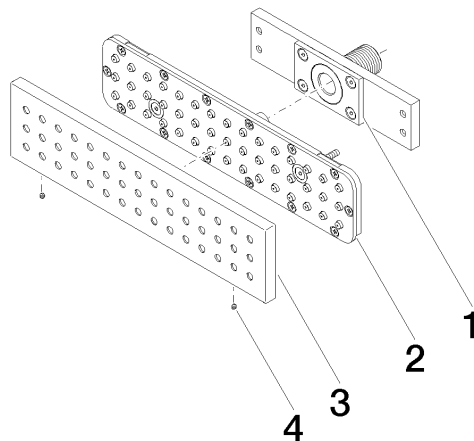
## Neck and back massage - Brushed stainless steel / platinum matt

ST 050 522 0985

Product version up to 5/15/2020

Product version from 5/15/2020 to 5/16/2020

**Product version from 5/16/2020**



Neck and back massage - Brushed stainless steel / platinum matt

ST 050 522 0985

Spare parts list

Product version up to 5/15/2020

Product version from 5/15/2020 to 5/16/2020

**Product version from 5/16/2020**

No.	Item Number	Name	Quantity used	Delivery time
	90 11 02 137 00 90	connection	4	2









Neck and back massage - Brushed stainless steel / platinum matt

ST 050 522 0985

Error: Subreport could not be shown.



- rosette 60 x 60 mm
- head part with cut-to-length spindle and sleeve
- WRAS 2011026, 2010066

	Brushed Platinum	36 607 985-0
	Chrome	36 607 985-0
	Platinum	36 607 985-0
	Dark Chrome	36 607 985-1
	Brushed Light Gold	36 607 985-2
	Brushed Durabronze (23kt Gold)	36 607 985-2
	Brushed Chrome	36 607 985-9
	Brushed Dark Platinum	36 607 985-9

Neck and back massage - Brushed stainless steel / platinum matt

ST 050 522 0985

6  
—  
0  
—  
8  
—  
9  
—  
7  
—  
8  
—  
3  
—  
9  
—

Required miscellaneous



**Wall valve 1/2" -**  
•max. recess depth 145 mm  
•min. recess depth 75 mm

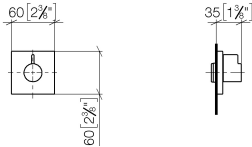
35 607 970 90



Neck and back massage - Brushed stainless steel / platinum matt

ST 050 522 0985

mm [inches]



Certificates

IAPMO_4976	DVGW_DW-6501DN0	WRAS_2010	LGA_29	LGA_29
DVGW_DW-6512DN0	WRAS_2011			

Neck and back massage - Brushed stainless steel / platinum matt

ST 050 522 0985

Codes & Standards

ASME A112.18.1	cUPC	DIN 4109	EN 1111
EN 200	ISO 3822	Scottish Water Byelaws	UK Water Supply Regulations

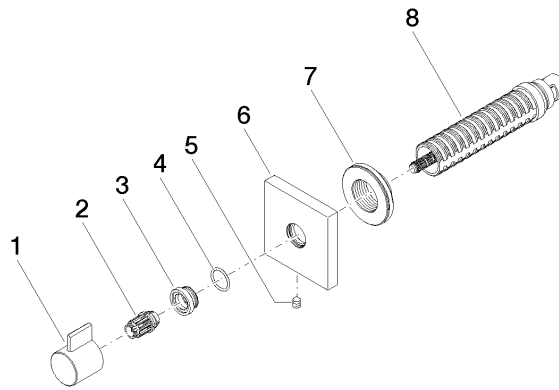
Ü-Zeichen

## Neck and back massage - Brushed stainless steel / platinum matt

---

ST 050 522 0985

**Product version from 6/1/2024**





Neck and back massage - Brushed stainless steel / platinum matt

ST 050 522 0985

Spare parts list

Product version from 6/1/2024

No.	Item Number	Name	Quantity used	Delivery time
	09 20 98 002-06	handle	8	10

Neck and back massage - Brushed stainless steel / platinum matt

ST 050 522 0985



- length 450-480 mm
- for ceiling substructure installation
- stainless steel cover 125 x 50 mm



Brushed Stainless  
Steel

12 940 979-8



Stainless Steel

12 940 979-8

Neck and back massage - Brushed stainless steel / platinum matt

---

ST 050 522 0985

6

—

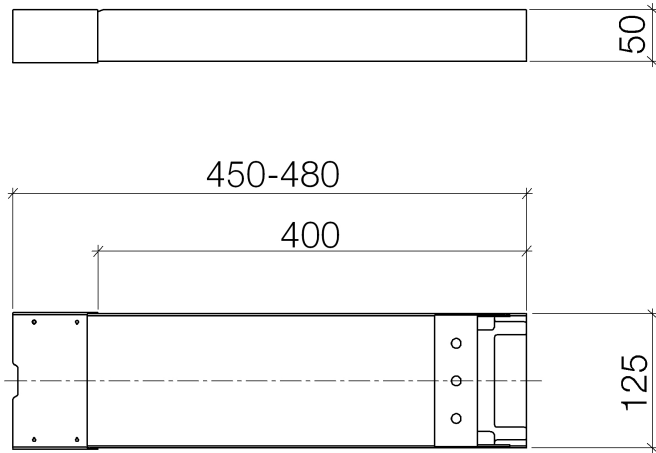
5

—

## Neck and back massage - Brushed stainless steel / platinum matt

---

ST 050 522 0985



## Neck and back massage - Brushed stainless steel / platinum matt

---

ST 050 522 0985



Neck and back massage - Brushed stainless steel / platinum matt

ST 050 522 0985

**Spare parts list**



Fits: IMO, LULU, MADISON, MEM, TARA,  
CL.1, LISSÉ, VAIA, META, CYO

- Rain panel with 2 different spray modes
- PURIFY RAIN, 200 x 160 mm, max. flow rate 23.5 l/min (at 3 bar)
- FULL RAIN, 360 x 280 mm, max. flow rate 13.6 l/min (at 3 bar)
- cover plate, stainless steel 600 x 480 mm
- 2x flexible connection hose 1/2" - female thread
- 4x mounting pin
- pre-fitted stainless steel enclosure
- with anti-scale system



Brushed Stainless  
Steel

41 400 979-8



Stainless Steel

41 400 979-8

**technical data:**

- minimum flow rate 25 l/min (both rain modes together)
- flow at 3bar flow pressure in conjunction with xTOOL: 39l/min
- minimum flow pressure 2 bar
- max. flow pressure 4 bar
- weight: 12kg

**technical data:**

**plumbing:**

- recommended water hardness: 6-7 °dH - if the water is harder, integrate a water softener that uses the ion exchange principle into the feed pipe.
- for choosing the drainage, taking into consideration the discharge of all the products in the shower, the specific demand needs to be assessed.  
Recommendation: Floor drain (connected rating) = 1l/sec, drainage rate DN 50
- feed pipe (hot/cold): 2x DN 20
- for the optimum choice of hot water storage device - taking into consideration additional drawing-off points and the frequency with which BigRain is used - the specific demand needs to be assessed.

## Neck and back massage - Brushed stainless steel / platinum matt

---

ST 050 522 0985

6

—

5

—

### Recommended miscellaneous

---



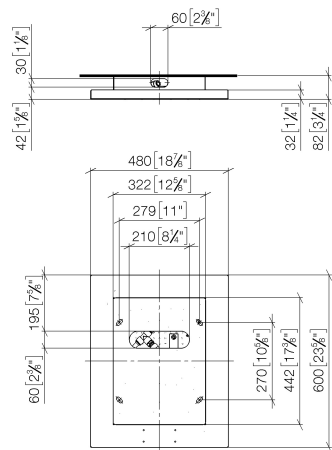
**BIG RAIN Cover for supply pipes - 12 940 979-86**  
**Brushed Stainless Steel**

- length 450-480 mm
- for ceiling substructure installation
- stainless steel cover 125 x 50 mm

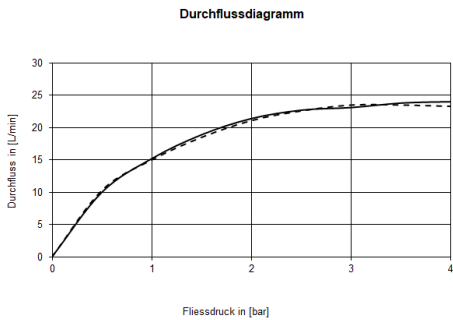
Neck and back massage - Brushed stainless steel / platinum matt

ST 050 522 0985

mm [inches]



Flow rate chart



Certificates

LGA\_18



Neck and back massage - Brushed stainless steel / platinum matt

---

ST 050 522 0985

Codes & Standards

---

DIN 4109

ISO 3822

Ü-Zeichen

## Neck and back massage - Brushed stainless steel / platinum matt

---

ST 050 522 0985

## Neck and back massage - Brushed stainless steel / platinum matt

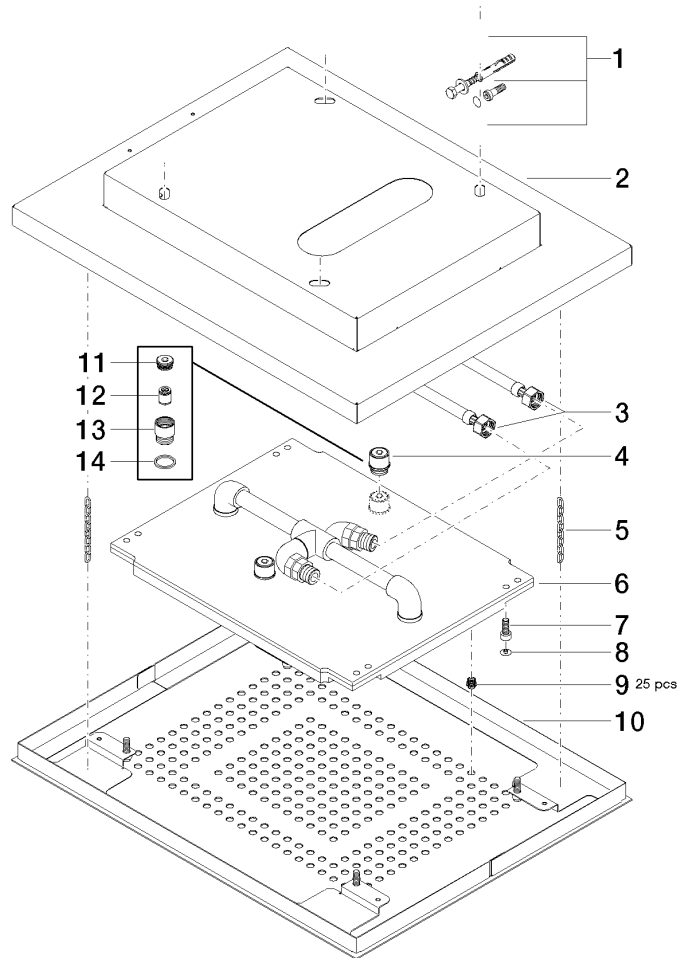
ST 050 522 0985

Product version up to 11/4/2019

Product version from 11/4/2019 to 4/1/2021

### Product version from 4/1/2021

Parts for other  
finishes can be found  
here: [Stainless Steel](#)



Neck and back massage - Brushed stainless steel / platinum matt

ST 050 522 0985

Spare parts list

Product version up to 11/4/2019

Product version from 11/4/2019 to 4/1/2021

**Product version from 4/1/2021**

No.	Item Number	Name	Quantity used	Delivery time
	04 30 35 010 00 90	fixing set	30	2