

WATER TUBE Kneipp wall elbow - Brushed Dark Platinum

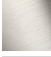



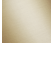

IMO

ST 050 608 4979



Fits: IMO, MEM, CL.1, CYO

- LAMINAR FLOW, max. flow rate 15 l/min (at 3 bar)
- rosette 60 x 60 mm
- holder for Kneipp hose
- 1/2" wall elbow
- hose nozzle with sleeve M33
- with holding ring

	Brushed Dark Platinum	ST 050 608 4979-99
	Chrome	ST 050 608 4979-00
	Brushed Platinum	ST 050 608 4979-06
	Platinum	ST 050 608 4979-08
	Dark Chrome	ST 050 608 4979-19
	Brushed Durabrass (23kt Gold)	ST 050 608 4979-28
	Brushed Champagne (22kt Gold)	ST 050 608 4979-46
	Champagne (22kt Gold)	ST 050 608 4979-47
	Brushed Chrome	ST 050 608 4979-93

Individual components of this set

You need the following components for this set



1x 27 822 979-99



1x 28 285 979-99

WATER TUBE Kneipp wall elbow - Brushed Dark Platinum


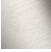

IMO

ST 050 608 4979



- laminar flow
- Max. flow rate l/min (at 3 bar)
- rosette 60 x 60 mm
- holder for Kneipp hose
- 1/2" wall elbow
- without hose

Intrinsic protection against back flow.  
Product change as of 1.4.2023: max. flow 15 l/min

	Brushed Dark Platinum	27 822 979-9
	Chrome	27 822 979-0
	Brushed Platinum	27 822 979-0
	Platinum	27 822 979-0
	Dark Chrome	27 822 979-1
	Brushed Durabrass (23kt Gold)	27 822 979-2
	Matte Black	27 822 979-3
	Brushed Champagne (22kt Gold)	27 822 979-4
	Champagne (22kt Gold)	27 822 979-4
	Brushed Chrome	27 822 979-9

ST 050 608 4979

19  
—  
10  
—  
16  
—  
18  
—  
9  
—  
18  
—  
13  
—  
6  
—  
7  
—  
13  
—

Required miscellaneous



**WATER TUBE Kneipp hose black** 28 286 979-99  
**2000 mm - Brushed Dark Platinum**  
●with holding ring  
●hose nozzle with sleeve M33

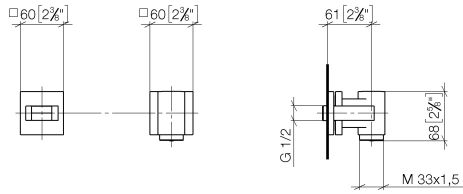
Required miscellaneous



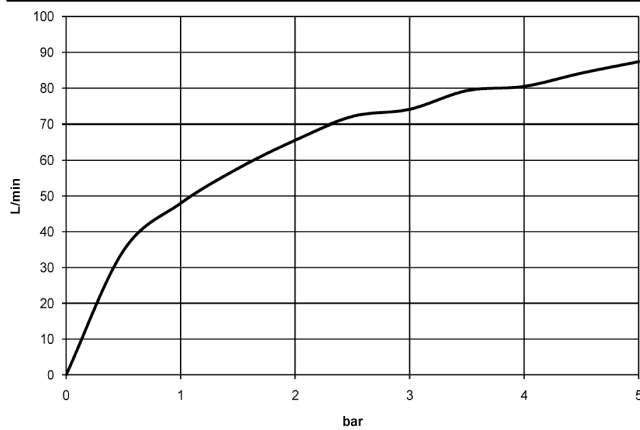
**WATER TUBE Kneipp hose white** 28 285 979-99  
**2000 mm - Brushed Dark Platinum**  
●with holding ring  
●hose nozzle with sleeve M33

ST 050 608 4979

mm [inches]



Flow rate chart



## Certificates

Belgaqua\_22\_280\_2

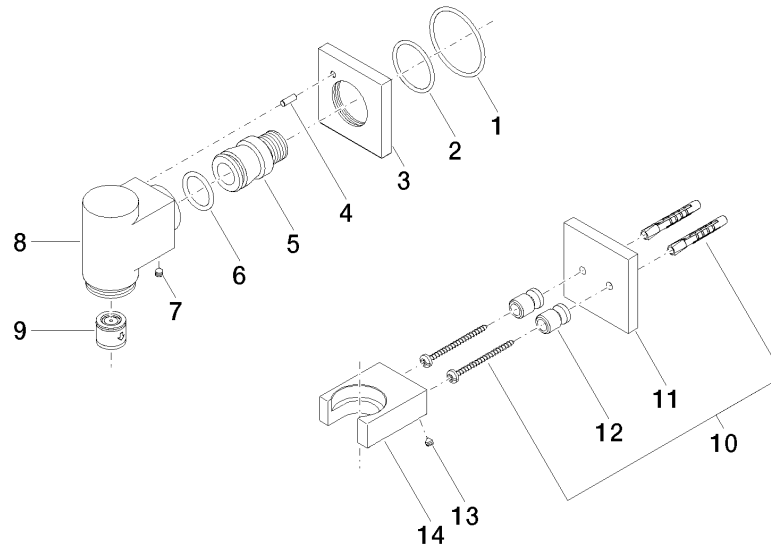
## Codes & Standards

EN 1717



**Product version from 3/12/2018**

Parts for other  
finishes can be found  
here: [Chrome](#)








ST 050 608 4979

Spare parts list

Product version from 3/12/2018



- hose nozzle with sleeve M33
- with holding ring

	Brushed Dark Platinum	28 285 979-9
	Chrome	28 285 979-0
	Brushed Platinum	28 285 979-0
	Platinum	28 285 979-0
	Dark Chrome	28 285 979-1
	Brushed Durabronze (23kt Gold)	28 285 979-2
	Matte Black	28 285 979-3
	Brushed Champagne (22kt Gold)	28 285 979-4
	Champagne (22kt Gold)	28 285 979-4
	Brushed Chrome	28 285 979-9





WATER TUBE Kneipp wall elbow - Brushed Dark Platinum

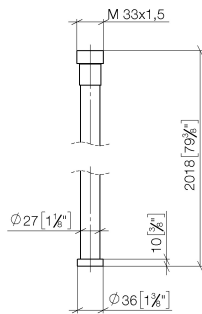
IMO

ST 050 608 4979

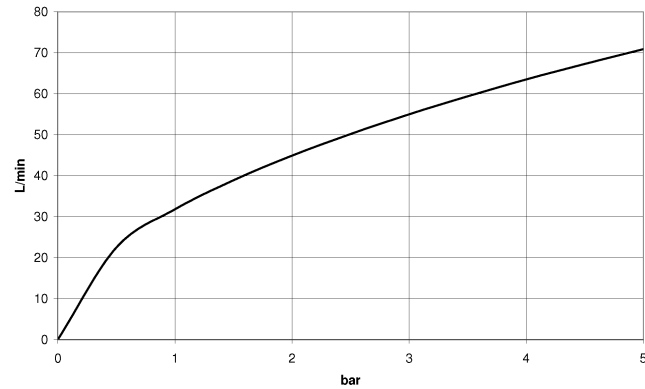
9  
—  
10  
—  
16  
—  
18  
—  
9  
—  
8  
—  
3  
—  
6  
—  
7  
—  
3  
—

ST 050 608 4979

mm [inches]

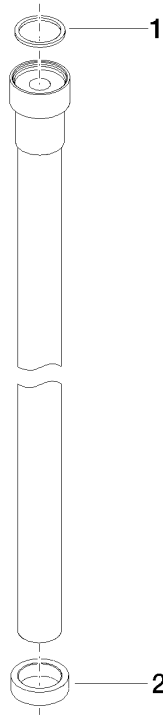


**Flow rate chart**





Parts for other  
finishes can be found  
here: [Chrome](#)





WATER TUBE Kneipp wall elbow - Brushed Dark Platinum

IMO

ST 050 608 4979

Spare parts list

No.	Item Number	Name	Quantity used	Delivery time
	09 14 20 003 90	seal	2	2